

## Product datasheet for **TA369735**

### Y14 (RBM8A) Rabbit Polyclonal Antibody

#### Product data:

Product Type:	Primary Antibodies
Applications:	IHC, WB
Recommended Dilution:	WB: 200-1000 WB positive control: HeLa/Jurkat and HEPG2 cell lysates IHC: 25-100 Positive control: Human lung cancer Predicted cell location: Nucleus
Reactivity:	Human, Mouse, Rat
Host:	Rabbit
Isotype:	IgG
Clonality:	Polyclonal
Immunogen:	Full length fusion protein
Formulation:	pH7.4 PBS, 0.05% NaN <sub>3</sub> , 40% Glycerol
Concentration:	lot specific
Purification:	Antigen affinity purification
Conjugation:	Unconjugated
Storage:	Store at -20°C.
Stability:	1 year
Predicted Protein Size:	20 kDa
Gene Name:	RNA binding motif protein 8A
Database Link:	<a href="#">Entrez Gene 9939 Human Q9Y5S9</a>



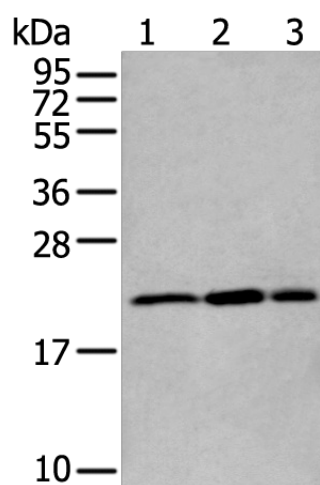
[View online »](#)

**Background:**

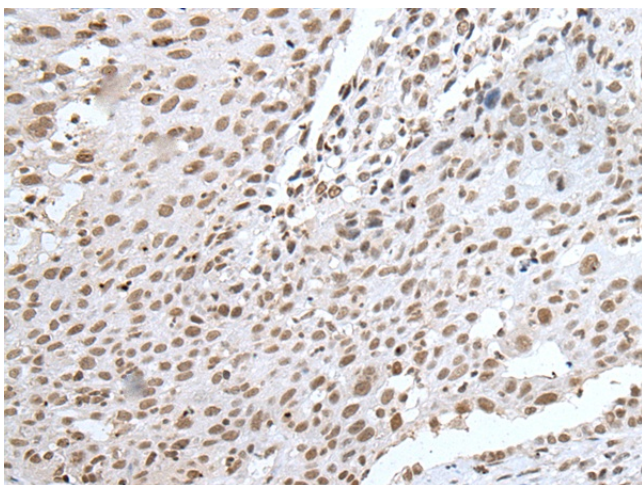
This gene encodes a protein with a conserved RNA-binding motif. The protein is found predominantly in the nucleus, although it is also present in the cytoplasm. It is preferentially associated with mRNAs produced by splicing, including both nuclear mRNAs and newly exported cytoplasmic mRNAs. It is thought that the protein remains associated with spliced mRNAs as a tag to indicate where introns had been present, thus coupling pre- and post-mRNA splicing events. Previously, it was thought that two genes encode this protein, RBM8A and RBM8B; it is now thought that the RBM8B locus is a pseudogene. There are two alternate translation start codons with this gene, which result in two forms of the protein. An allele mutation and a low-frequency noncoding single-nucleotide polymorphism (SNP) in this gene cause thrombocytopenia-absent radius (TAR) syndrome.

**Synonyms:**

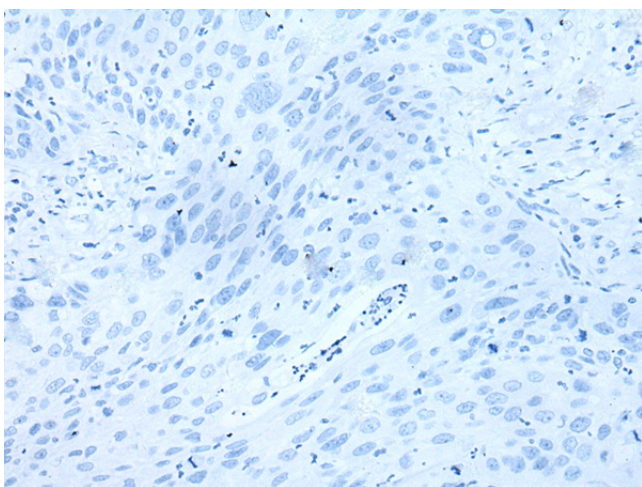
BOV-1; BOV-1A; BOV-1B; BOV-1C; MDS014; RBM8; RBM8B; Y14; ZNRP; ZRNP1

**Product images:**

Gel: 12%SDS-PAGE  
Lysate: 40 µg  
Lane 1-3: Hela  
Jurkat and HEPG2 cell lysates  
Primary antibody: TA369735 (RBM8A Antibody) at dilution 1/200  
Secondary antibody: Goat anti rabbit IgG at 1/8000 dilution  
Exposure time: 60 seconds



Immunohistochemistry of paraffin-embedded Human lung cancer tissue using TA369735 (RBM8A Antibody) at dilution 1/30 (Original magnification: ×200)



Immunohistochemistry of paraffin-embedded Human lung cancer tissue using TA369735 (RBM8A Antibody) at dilution 1/30, treated with fusion protein. (Original magnification:  $\times 200$ )