

Product datasheet for **TA369730**

H3FI (HIST1H3F) Rabbit Polyclonal Antibody

Product data:

Product Type:	Primary Antibodies
Applications:	IHC, WB
Recommended Dilution:	WB: 500-2000 WB positive control: Jurkat cell lysate IHC: 25-100 Positive control: Human liver cancer Predicted cell location: Nucleus
Reactivity:	Human, Mouse
Host:	Rabbit
Isotype:	IgG
Clonality:	Polyclonal
Immunogen:	Fusion protein of human H3C1
Formulation:	pH7.4 PBS, 0.05% NaN ₃ , 40% Glycerol
Concentration:	lot specific
Purification:	Antigen affinity purification
Conjugation:	Unconjugated
Storage:	Store at -20°C.
Stability:	1 year
Predicted Protein Size:	15 kDa
Gene Name:	histone cluster 1, H3f
Database Link:	Entrez Gene 8968 Human P68431



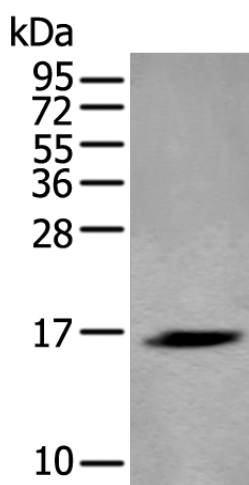
[View online »](#)

Background:

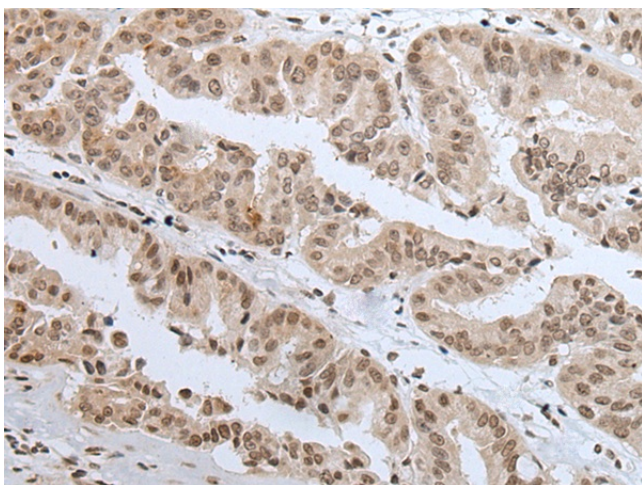
Histones are basic nuclear proteins that are responsible for the nucleosome structure of the chromosomal fiber in eukaryotes. This structure consists of approximately 146 bp of DNA wrapped around a nucleosome, an octamer composed of pairs of each of the four core histones (H2A, H2B, H3, and H4). The chromatin fiber is further compacted through the interaction of a linker histone, H1, with the DNA between the nucleosomes to form higher order chromatin structures. This gene is intronless and encodes a replication-dependent histone that is a member of the histone H3 family. Transcripts from this gene lack polyA tails; instead, they contain a palindromic termination element. This gene is found in the large histone gene cluster on chromosome 6p22-p21.3. [provided by RefSeq, Aug 2015]

Synonyms:

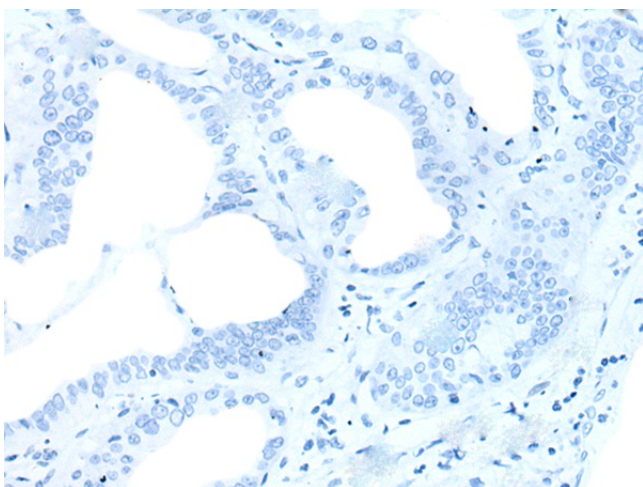
H3/a; H3/b; H3/c; H3/d; H3/f; H3/h; H3/i; H3/j; H3/k; H3/l; H3FA; H3FB; H3FC; H3FD; H3FF; H3FH; H3FI; H3FJ; H3FK; H3FL

Product images:

Gel: 12%SDS-PAGE
Lysate: 40 µg
Lane: Jurkat cell lysate
Primary antibody: TA369730 (H3C1 Antibody) at dilution 1/300
Secondary antibody: Goat anti rabbit IgG at 1/8000 dilution
Exposure time: 40 seconds



Immunohistochemistry of paraffin-embedded Human liver cancer tissue using TA369730 (H3C1 Antibody) at dilution 1/35 (Original magnification: x200)



Immunohistochemistry of paraffin-embedded Human liver cancer tissue using TA369730 (H3C1 Antibody) at dilution 1/35, treated with fusion protein. (Original magnification: x200)