

Product datasheet for **TA369710S**

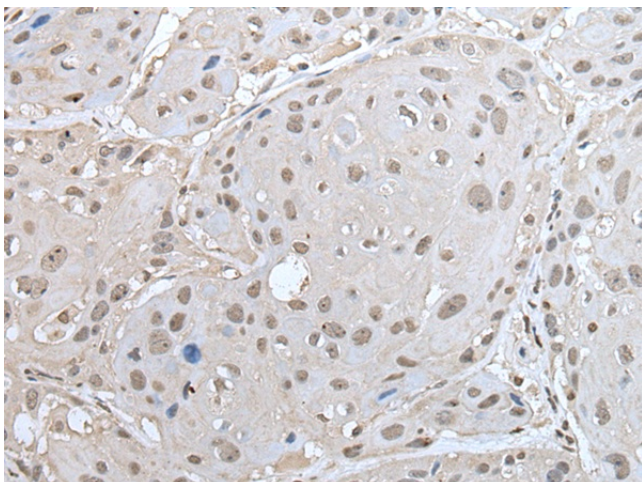
ZNF302 Rabbit Polyclonal Antibody

Product data:

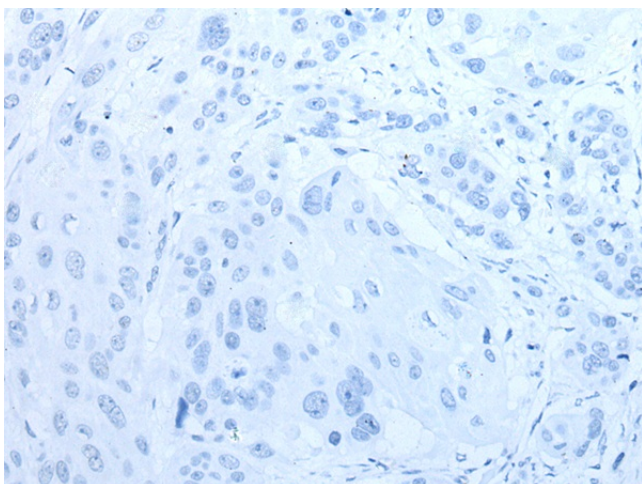
Product Type:	Primary Antibodies
Applications:	IHC
Recommended Dilution:	IHC: 25-100 Positive control: Human esophagus cancer Predicted cell location: Nucleus
Reactivity:	Human
Host:	Rabbit
Isotype:	IgG
Clonality:	Polyclonal
Immunogen:	Fusion protein of human ZNF302
Formulation:	pH7.4 PBS, 0.05% NaN ₃ , 40% Glycerol
Purification:	Antigen affinity purification
Conjugation:	Unconjugated
Storage:	Store at -20°C.
Stability:	1 year
Gene Name:	zinc finger protein 302
Database Link:	Entrez Gene 55900 Human Q9NR11
Background:	This gene encodes a member of the zinc-finger protein family. The encoded protein contains seven C ₂ H ₂ -type zinc fingers and a KRAB domain, but its function has yet to be determined. Alternatively spliced transcript variants have been described.
Synonyms:	HSD16; MST154; MSTP154; ZNF135-like; ZNF135L; ZNF140-like; ZNF140L; ZNF327



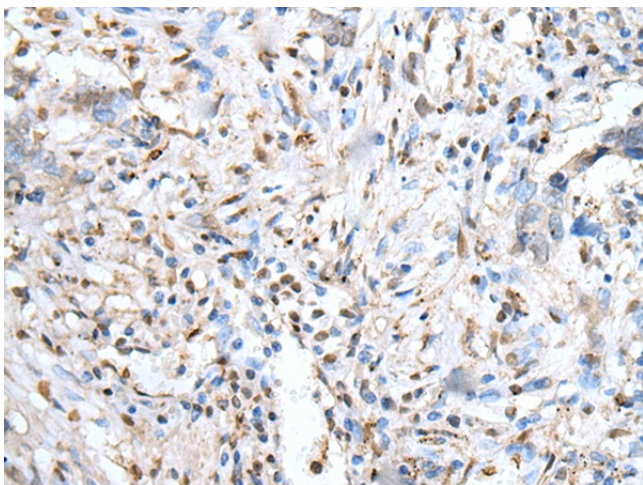
[View online »](#)

Product images:

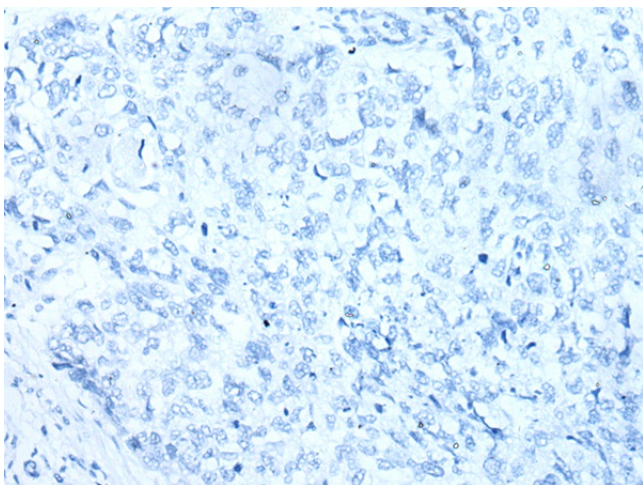
Immunohistochemistry of paraffin-embedded Human esophagus cancer tissue using [TA369710] (ZNF302 Antibody) at dilution 1/30 (Original magnification: x200)



Immunohistochemistry of paraffin-embedded Human esophagus cancer tissue using [TA369710] (ZNF302 Antibody) at dilution 1/30, treated with fusion protein. (Original magnification: x200)



Immunohistochemistry of paraffin-embedded Human lung cancer tissue using [TA369710] (ZNF302 Antibody) at dilution 1/30 (Original magnification: $\times 200$)



Immunohistochemistry of paraffin-embedded Human lung cancer tissue using [TA369710] (ZNF302 Antibody) at dilution 1/30, treated with fusion protein. (Original magnification: $\times 200$)