

## Product datasheet for **TA369706S**

### ZNF263 Rabbit Polyclonal Antibody

#### Product data:

**Product Type:** Primary Antibodies  
**Applications:** IHC, WB  
**Recommended Dilution:** WB: 500-2000  
 WB positive control: Human liver tissue lysate  
 IHC: 25-100  
 Positive control: Human cervical cancer  
 Predicted cell location: Cytoplasm and Nucleus

**Reactivity:** Human

**Host:** Rabbit

**Isotype:** IgG

**Clonality:** Polyclonal

**Immunogen:** Fusion protein of human ZNF263

**Formulation:** pH7.4 PBS, 0.05% NaN<sub>3</sub>, 40% Glycerol

**Purification:** Antigen affinity purification

**Conjugation:** Unconjugated

**Storage:** Store at -20°C.

**Stability:** 1 year

**Predicted Protein Size:** 77 kDa

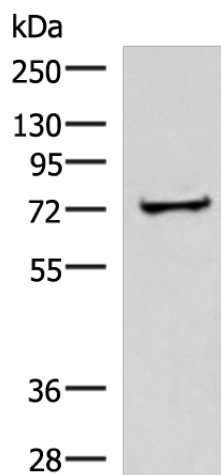
**Gene Name:** zinc finger protein 263

**Database Link:** [Entrez Gene 10127 Human](#)  
[Q14978](#)

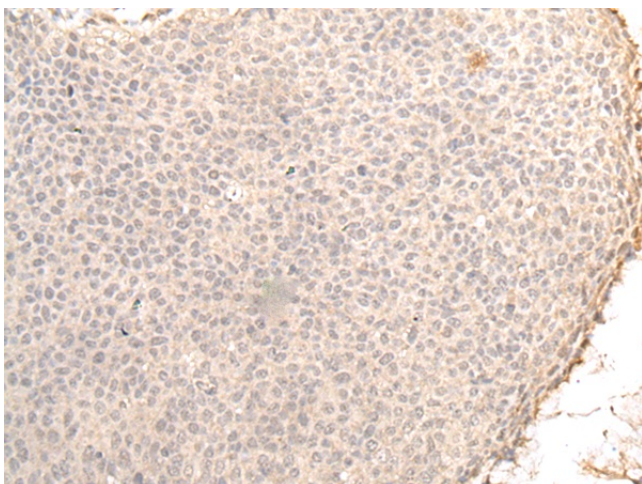
**Background:** ZNF263 (Zinc finger protein 263), also known as FPM315 or ZKSCAN12 (Zinc finger protein with KRAB and SCAN domains 12), is a 683 amino acid nuclear protein that contains nine C2H2-type zinc fingers, one KRAB domain and one SCAN box domain. ZNF263 acts as a transcriptional repressor in the nucleus and is expressed in various tissues including heart, brain, placenta, lung, liver, skeletal muscle, kidney, pancreas, spleen, thymus, prostate, testis, ovary, small intestine, colon and leukocyte.

**Synonyms:** FPM315; ZKSCAN12

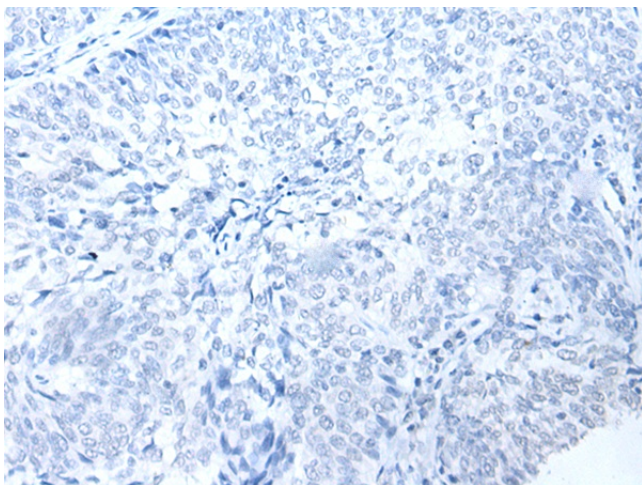

[View online »](#)

**Product images:**


Gel: 6%SDS-PAGE  
 Lysate: 60 µg  
 Lane: Human liver tissue lysate  
 Primary antibody: [TA369706] (ZNF263 Antibody)  
 at dilution 1/500  
 Secondary antibody: Goat anti rabbit IgG at  
 1/5000 dilution  
 Exposure time: 7 seconds



Immunohistochemistry of paraffin-embedded  
 Human cervical cancer tissue using [TA369706]  
 (ZNF263 Antibody) at dilution 1/30 (Original  
 magnification: ×200)



Immunohistochemistry of paraffin-embedded Human cervical cancer tissue using [TA369706] (ZNF263 Antibody) at dilution 1/30, treated with fusion protein. (Original magnification:  $\times 200$ )