

Product datasheet for **TA369705S**

ZNF259 (ZPR1) Rabbit Polyclonal Antibody

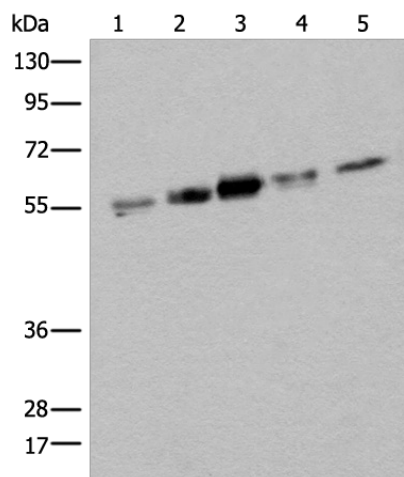
Product data:

Product Type:	Primary Antibodies
Applications:	IHC, WB
Recommended Dilution:	WB: 500-2000 WB positive control: Hela□HEPG2□231□A431 and Jurkat cell lysates IHC: 30-150 Positive control: Human thyroid cancer Predicted cell location: Cytoplasm and Nucleus
Reactivity:	Human, Mouse
Host:	Rabbit
Isotype:	IgG
Clonality:	Polyclonal
Immunogen:	Fusion protein of human ZPR1
Formulation:	pH7.4 PBS, 0.05% NaN ₃ , 40% Glycerol
Purification:	Antigen affinity purification
Conjugation:	Unconjugated
Storage:	Store at -20°C.
Stability:	1 year
Predicted Protein Size:	51 kDa
Gene Name:	ZPR1 zinc finger
Database Link:	Entrez Gene 8882 Human O75312

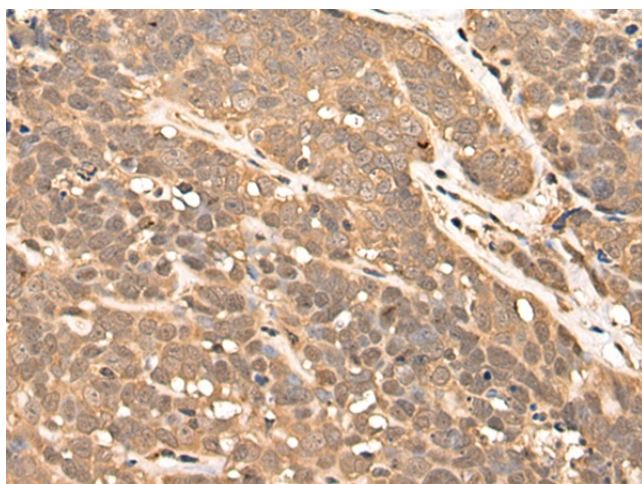
Background: The protein encoded by this gene is found in the cytoplasm of quiescent cells but translocates to the nucleolus in proliferating cells. The encoded protein interacts with survival motor neuron protein (SMN1) to enhance pre-mRNA splicing and to induce neuronal differentiation and axonal growth. Defects in this gene or the SMN1 gene can cause spinal muscular atrophy. Two transcript variants encoding different isoforms have been found for this gene.



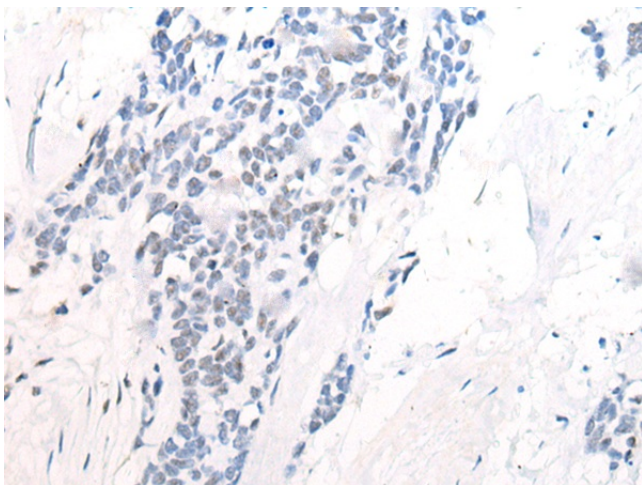
[View online »](#)

Product images:


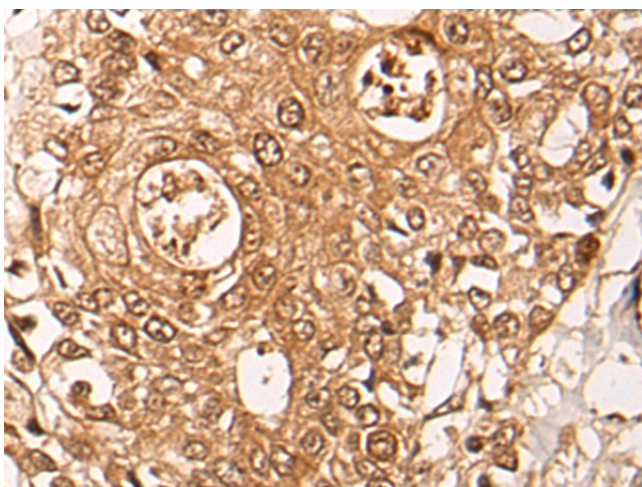
Gel: 8%SDS-PAGE
 Lysate: 40 μ g
 Lane 1-5: HeLa
 HEPG2
 A431 and Jurkat cell lysates
 Primary antibody: [TA369705] (ZPR1 Antibody) at
 dilution 1/400
 Secondary antibody: Goat anti rabbit IgG at
 1/8000 dilution
 Exposure time: 20 seconds



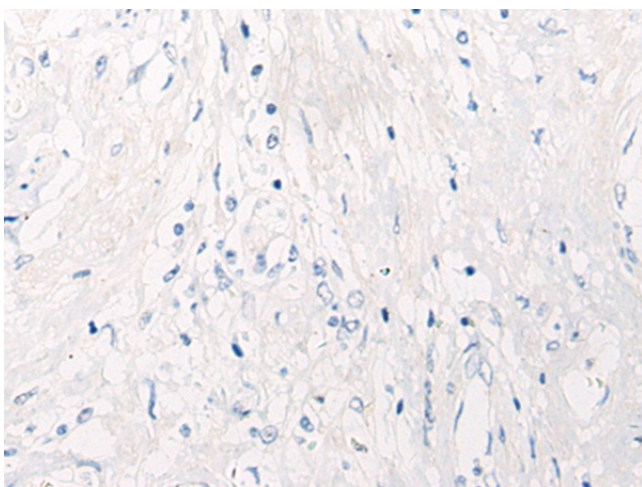
Immunohistochemistry of paraffin-embedded
 Human thyroid cancer tissue using [TA369705]
 (ZPR1 Antibody) at dilution 1/40 (Original
 magnification: \times 200)



Immunohistochemistry of paraffin-embedded Human thyroid cancer tissue using [TA369705] (ZPR1 Antibody) at dilution 1/40, treated with fusion protein. (Original magnification: ×200)



Immunohistochemistry of paraffin-embedded Human prostate cancer tissue using [TA369705] (ZPR1 Antibody) at dilution 1/40 (Original magnification: ×200)



Immunohistochemistry of paraffin-embedded Human prostate cancer tissue using [TA369705] (ZPR1 Antibody) at dilution 1/40, treated with fusion protein. (Original magnification: ×200)