

Product datasheet for **TA369696**

ZKSCAN1 Rabbit Polyclonal Antibody

Product data:

Product Type:	Primary Antibodies
Applications:	IHC, WB
Recommended Dilution:	WB: 500-2000 WB positive control: Human cerebrum tissue lysate IHC: 25-100 Positive control: Human tonsil Predicted cell location: Nucleus and Cytoplasm
Reactivity:	Human, Mouse, Rat
Host:	Rabbit
Isotype:	IgG
Clonality:	Polyclonal
Immunogen:	Fusion protein of human ZKSCAN1
Formulation:	pH7.4 PBS, 0.05% NaN ₃ , 40% Glycerol
Concentration:	lot specific
Purification:	Antigen affinity purification
Conjugation:	Unconjugated
Storage:	Store at -20°C.
Stability:	1 year
Predicted Protein Size:	64 kDa
Gene Name:	zinc finger with KRAB and SCAN domains 1
Database Link:	Entrez Gene 7586 Human P17029



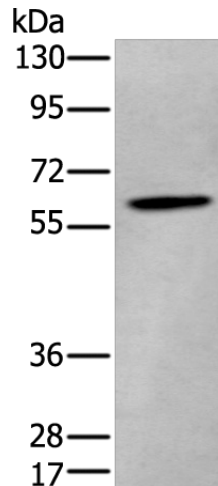
[View online »](#)

Background:

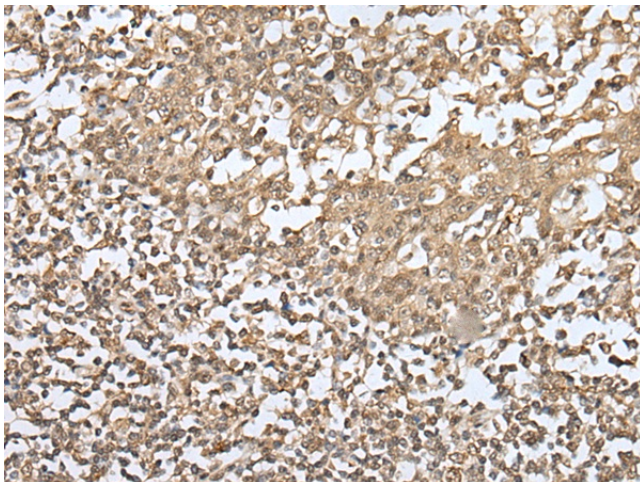
The ZKSCAN1 gene encodes a transcriptional regulator of the KRAB (Kruppel-associated box) subfamily of zinc finger proteins, which contain repeated Cys2-His2 (C2H2) zinc finger domains that are connected by conserved sequences, called H/C links (summarized by Tommerup and Vissing, 1995 [PubMed 7557990]). Transcriptional regulatory proteins containing tandemly repeated zinc finger domains are thought to be involved in both normal and abnormal cellular proliferation and differentiation. See ZNF91 (MIM 603971) for general information on zinc finger proteins.

Synonyms:

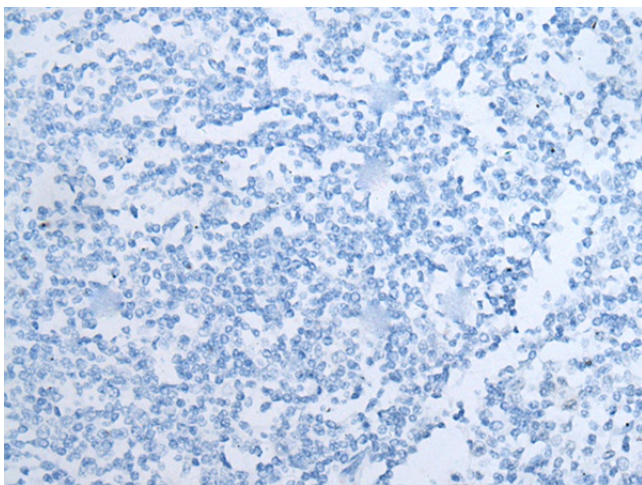
9130423L19Rik; KOX18; MGC138429; PHZ-37; ZNF36; ZNF139

Product images:

Gel: 8%SDS-PAGE
Lysate: 40 µg
Lane: Human cerebrum tissue lysate
Primary antibody: TA369696 (ZKSCAN1 Antibody) at dilution 1/400
Secondary antibody: Goat anti rabbit IgG at 1/8000 dilution
Exposure time: 30 seconds



Immunohistochemistry of paraffin-embedded Human tonsil tissue using TA369696 (ZKSCAN1 Antibody) at dilution 1/30 (Original magnification: ×200)



Immunohistochemistry of paraffin-embedded Human tonsil tissue using TA369696 (ZKSCAN1 Antibody) at dilution 1/30, treated with fusion protein. (Original magnification: $\times 200$)