

## Product datasheet for **TA369683S**

### MIF4GD Rabbit Polyclonal Antibody

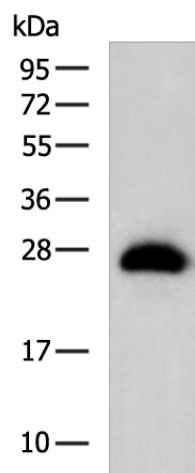
#### Product data:

Product Type:	Primary Antibodies
Applications:	IHC, WB
Recommended Dilution:	WB: 500-2000 WB positive control: 293T cell lysate IHC: 50-200 Positive control: Human colorectal cancer Predicted cell location: Cytoplasm
Reactivity:	Human
Host:	Rabbit
Isotype:	IgG
Clonality:	Polyclonal
Immunogen:	Fusion protein of human MIF4GD
Formulation:	pH7.4 PBS, 0.05% NaN <sub>3</sub> , 40% Glycerol
Purification:	Antigen affinity purification
Conjugation:	Unconjugated
Storage:	Store at -20°C.
Stability:	1 year
Predicted Protein Size:	25 kDa
Gene Name:	MIF4G domain containing
Database Link:	<a href="#">Entrez Gene 57409 Human A9UHW6</a>
Background:	This gene encodes a protein which interacts with the N-terminus of the stem-loop binding protein (SLBP) and the 3' end of histone mRNA. This interaction facilitates the activation of histone mRNA translation. Alternative splicing results in multiple transcript variants encoding different isoforms.
Synonyms:	AD023; hSLIP1; MGC45027; MIFD; SLIP1

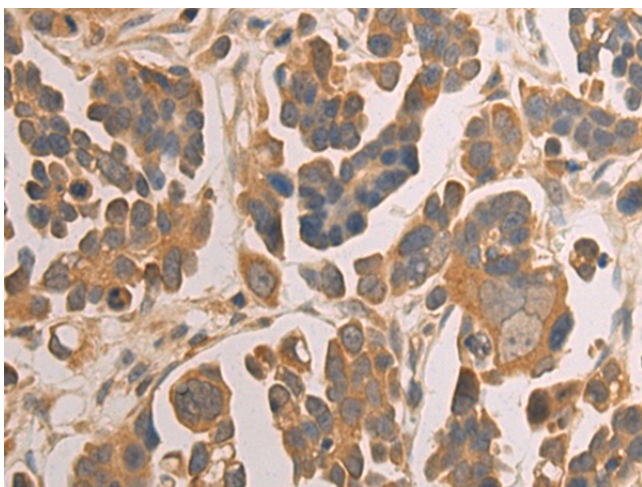


[View online »](#)

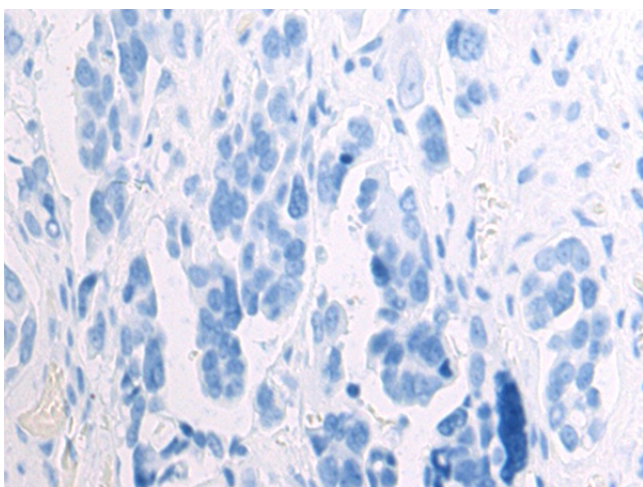
## Product images:



Gel: 12%SDS-PAGE  
Lysate: 40  $\mu$ g  
Lane: 293T cell lysate  
Primary antibody: [TA369683] (MIF4GD Antibody) at dilution 1/550  
Secondary antibody: Goat anti rabbit IgG at 1/5000 dilution  
Exposure time: 2 seconds



Immunohistochemistry of paraffin-embedded Human colorectal cancer tissue using [TA369683] (MIF4GD Antibody) at dilution 1/70 (Original magnification:  $\times$ 200)



Immunohistochemistry of paraffin-embedded Human colorectal cancer tissue using [TA369683] (MIF4GD Antibody) at dilution 1/70, treated with fusion protein. (Original magnification: ×200)