

## Product datasheet for **TA369680**

### ASB9 Rabbit Polyclonal Antibody

#### Product data:

Product Type:	Primary Antibodies
Applications:	IHC, WB
Recommended Dilution:	WB: 200-1000 WB positive control: Human testis tissue IHC: 25-100 Positive control: Human cervical cancer Predicted cell location: Cytoplasm
Reactivity:	Human
Host:	Rabbit
Isotype:	IgG
Clonality:	Polyclonal
Immunogen:	Full length fusion protein
Formulation:	pH7.4 PBS, 0.05% NaN <sub>3</sub> , 40% Glycerol
Concentration:	lot specific
Purification:	Antigen affinity purification
Conjugation:	Unconjugated
Storage:	Store at -20°C.
Stability:	1 year
Predicted Protein Size:	32 kDa
Gene Name:	ankyrin repeat and SOCS box containing 9
Database Link:	<a href="#">Entrez Gene 140462 Human</a> <a href="#">Q96DX5</a>



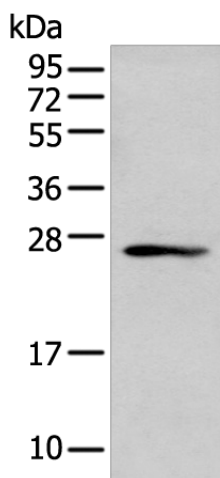
[View online »](#)

**Background:**

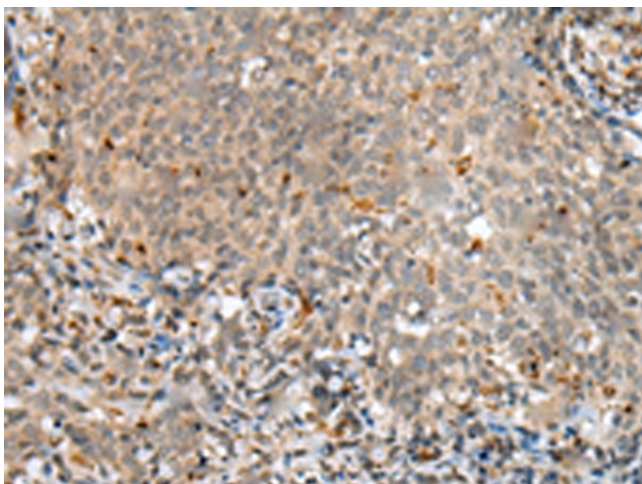
This gene encodes a member of the ankyrin repeat and suppressor of cytokine signaling (SOCS) box protein family. Members of this family can interact with the elongin B-C adapter complex via their SOCS box domain and further complex with the cullin and ring box proteins to form E3 ubiquitin ligase complexes. They may function to mediate the substrate-recognition of the E3 ubiquitin ligases. A transcribed pseudogene of this gene has been identified on chromosome 15. Multiple transcript variants encoding different isoforms have been found for this gene.

**Synonyms:**

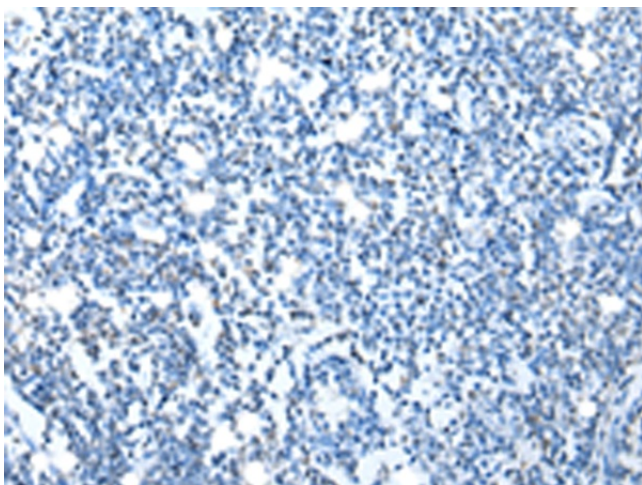
ASB-9; DKFZp564L0862; FLJ20636; MGC4954

**Product images:**


Gel: 12%SDS-PAGE  
Lysate: 40 µg  
Lane: Human testis tissue  
Primary antibody: TA369680 (ASB9 Antibody) at dilution 1/400  
Secondary antibody: Goat anti rabbit IgG at 1/8000 dilution  
Exposure time: 1 minute



Immunohistochemistry of paraffin-embedded Human cervical cancer tissue using TA369680 (ASB9 Antibody) at dilution 1/25 (Original magnification: ×200)



Immunohistochemistry of paraffin-embedded Human cervical cancer tissue using TA369680 (ASB9 Antibody) at dilution 1/25, treated with fusion protein. (Original magnification: ×200)