

Product datasheet for **TA369676S**

14-3-3 sigma (SFN) Rabbit Polyclonal Antibody

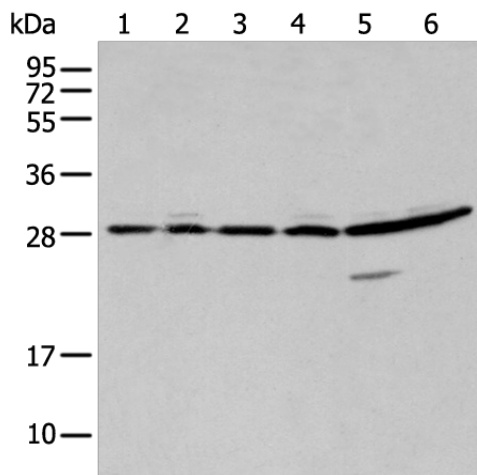
Product data:

Product Type:	Primary Antibodies
Applications:	IHC, WB
Recommended Dilution:	WB: 500-2000 WB positive control: RAW264.7, Hepg2, A431, 293T, A549 and Hela cell IHC: 25-100 Positive control: Human thyroid cancer Predicted cell location: Cytoplasm
Reactivity:	Human, Mouse
Host:	Rabbit
Isotype:	IgG
Clonality:	Polyclonal
Immunogen:	Full length fusion protein
Formulation:	pH7.4 PBS, 0.05% NaN ₃ , 40% Glycerol
Purification:	Antigen affinity purification
Conjugation:	Unconjugated
Storage:	Store at -20°C.
Stability:	1 year
Predicted Protein Size:	28 kDa
Gene Name:	stratifin
Database Link:	Entrez Gene 2810 Human P31947
Background:	Adapter protein implicated in the regulation of a large spectrum of both general and specialized signaling pathways. Binds to a large number of partners, usually by recognition of a phosphoserine or phosphothreonine motif. Binding generally results in the modulation of the activity of the binding partner. When bound to KRT17, regulates protein synthesis and epithelial cell growth by stimulating Akt/mTOR pathway. May also regulate MDM2 autoubiquitination and degradation and thereby activate p53/TP53.
Synonyms:	HME1; stratifin; YWHAS

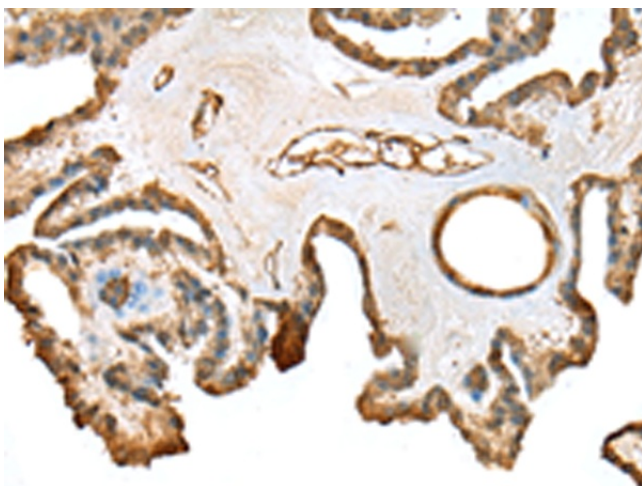


[View online »](#)

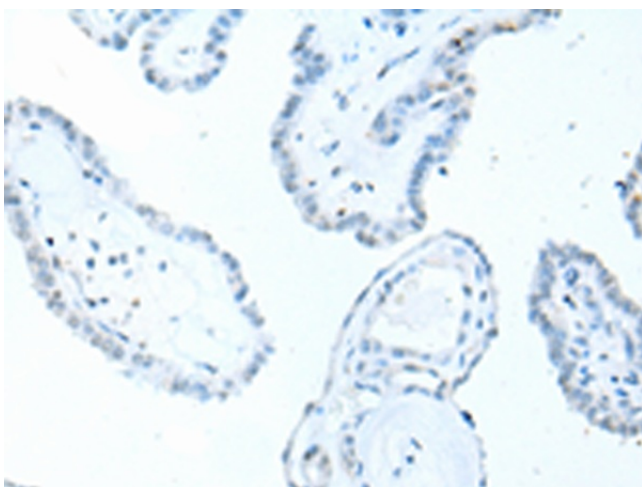
Product images:



Gel: 12%SDS-PAGE
 Lysate: 40 µg
 Lane 1-6: RAW264.7
 Hepg2
 A431
 293T
 A549 and Hela cell
 Primary antibody: [TA369676] (SFN Antibody) at dilution 1/250
 Secondary antibody: Goat anti rabbit IgG at 1/8000 dilution
 Exposure time: 3 seconds



Immunohistochemistry of paraffin-embedded Human thyroid cancer tissue using [TA369676] (SFN Antibody) at dilution 1/25 (Original magnification: ×200)



Immunohistochemistry of paraffin-embedded Human thyroid cancer tissue using [TA369676] (SFN Antibody) at dilution 1/25, treated with fusion protein. (Original magnification: ×200)