

Product datasheet for **TA369676**

14-3-3 sigma (SFN) Rabbit Polyclonal Antibody

Product data:

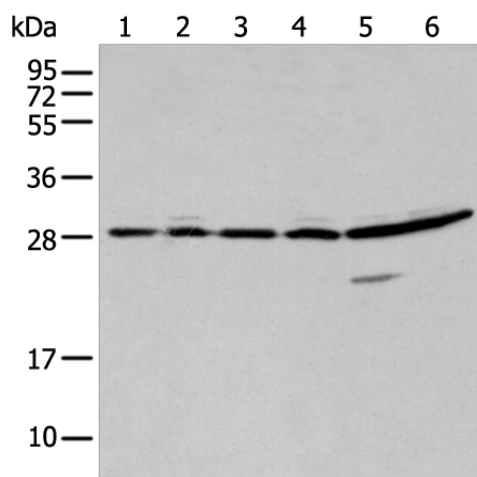
| | |
|-------------------------|--|
| Product Type: | Primary Antibodies |
| Applications: | IHC, WB |
| Recommended Dilution: | WB: 500-2000 WB positive control: RAW264.7, Hepg2, A431, 293T, A549 and Hela cell IHC: 25-100 Positive control: Human thyroid cancer Predicted cell location: Cytoplasm |
| Reactivity: | Human, Mouse |
| Host: | Rabbit |
| Isotype: | IgG |
| Clonality: | Polyclonal |
| Immunogen: | Full length fusion protein |
| Formulation: | pH7.4 PBS, 0.05% NaN ₃ , 40% Glycerol |
| Concentration: | lot specific |
| Purification: | Antigen affinity purification |
| Conjugation: | Unconjugated |
| Storage: | Store at -20°C. |
| Stability: | 1 year |
| Predicted Protein Size: | 28 kDa |
| Gene Name: | stratifin |
| Database Link: | Entrez Gene 2810 Human P31947 |
| Background: | Adapter protein implicated in the regulation of a large spectrum of both general and specialized signaling pathways. Binds to a large number of partners, usually by recognition of a phosphoserine or phosphothreonine motif. Binding generally results in the modulation of the activity of the binding partner. When bound to KRT17, regulates protein synthesis and epithelial cell growth by stimulating Akt/mTOR pathway. May also regulate MDM2 autoubiquitination and degradation and thereby activate p53/TP53. |



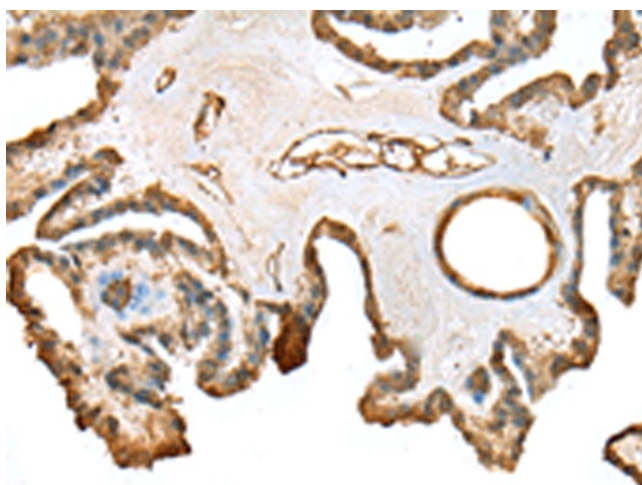
[View online »](#)

Synonyms: HME1; stratifin; YWHAS

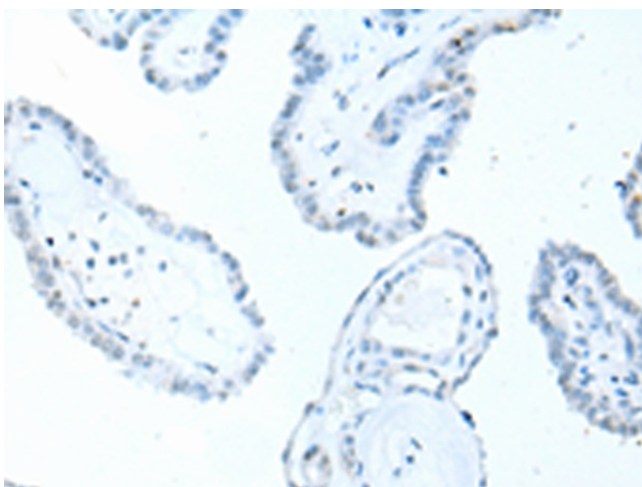
Product images:



Gel: 12%SDS-PAGE
 Lysate: 40 µg
 Lane 1-6: RAW264.7
 Hepg2
 A431
 293T
 A549 and Hela cell
 Primary antibody: TA369676 (SFN Antibody) at dilution 1/250
 Secondary antibody: Goat anti rabbit IgG at 1/8000 dilution
 Exposure time: 3 seconds



Immunohistochemistry of paraffin-embedded Human thyroid cancer tissue using TA369676 (SFN Antibody) at dilution 1/25 (Original magnification: ×200)



Immunohistochemistry of paraffin-embedded Human thyroid cancer tissue using TA369676 (SFN Antibody) at dilution 1/25, treated with fusion protein. (Original magnification: ×200)