

## Product datasheet for **TA369674**

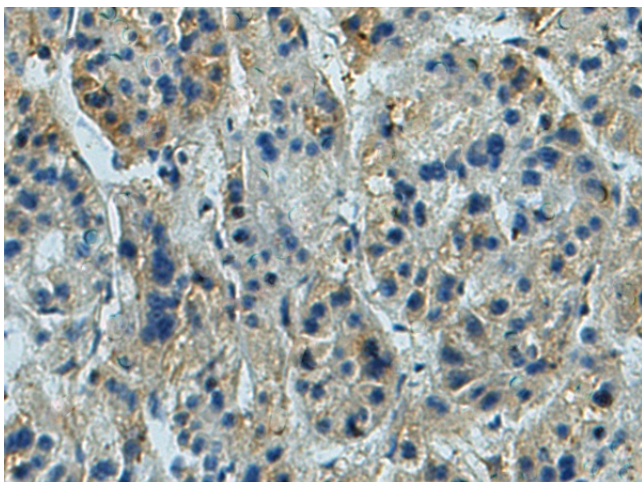
### LIN37 Rabbit Polyclonal Antibody

#### Product data:

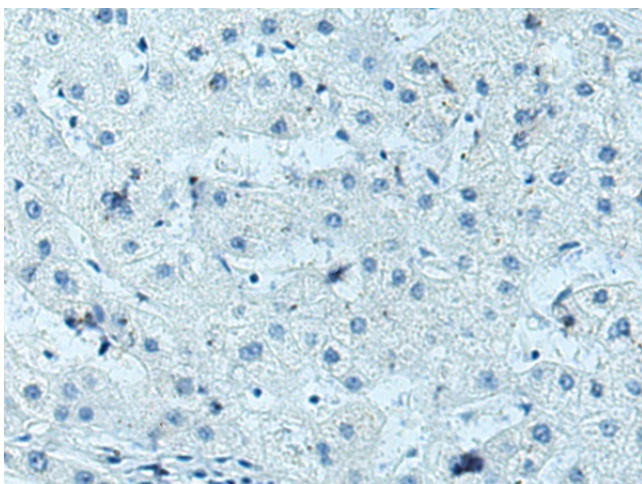
Product Type:	Primary Antibodies
Applications:	IHC
Recommended Dilution:	IHC: 50-200 Positive control: Human prostate cancer Predicted cell location: Cytoplasm
Reactivity:	Human, Mouse
Host:	Rabbit
Isotype:	IgG
Clonality:	Polyclonal
Immunogen:	Fusion protein of human LIN37
Formulation:	pH7.4 PBS, 0.05% NaN <sub>3</sub> , 40% Glycerol
Concentration:	lot specific
Purification:	Antigen affinity purification
Conjugation:	Unconjugated
Storage:	Store at -20°C.
Stability:	1 year
Gene Name:	lin-37 DREAM MuvB core complex component
Database Link:	<a href="#">Entrez Gene 55957 Human Q96GY3</a>
Background:	The LIN proteins regulate an intercellular signaling process that induces formation of the hermaphrodite vulva in <i>C. elegans</i> by acting to prevent the activation of a receptor tyrosine kinase/Ras signaling pathway. LIN37 is a 246 amino acid protein that is a mammalian homolog of the <i>C. elegans</i> Lin-37 protein. LIN37 functions as a component of the DREAM complex (also known as the LINC complex), which is comprised of several proteins, all of which work in concert to repress cell cycle-dependent genes. LIN37 is encoded by a gene located on human chromosome 19q13.2.
Synonyms:	Antolefinin; F25965; lin-37; MGC9505; ZK418.4



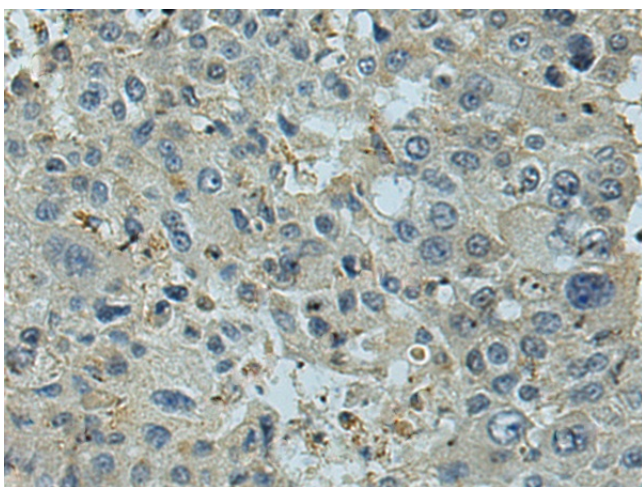
[View online »](#)

**Product images:**


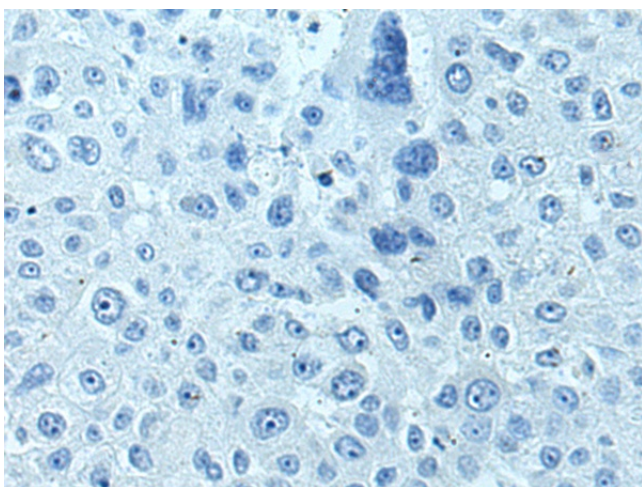
Immunohistochemistry of paraffin-embedded Human prostate cancer tissue using TA369674 (LIN37 Antibody) at dilution 1/80 (Original magnification: ×200)



Immunohistochemistry of paraffin-embedded Human prostate cancer tissue using TA369674 (LIN37 Antibody) at dilution 1/80, treated with fusion protein. (Original magnification: ×200)



Immunohistochemistry of paraffin-embedded Human liver cancer tissue using TA369674 (LIN37 Antibody) at dilution 1/80 (Original magnification: ×200)



Immunohistochemistry of paraffin-embedded Human liver cancer tissue using TA369674 (LIN37 Antibody) at dilution 1/80, treated with fusion protein. (Original magnification: ×200)