

Product datasheet for **TA369673S**

UBE2Z Rabbit Polyclonal Antibody

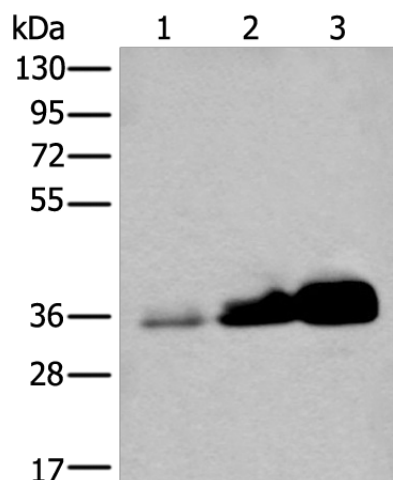
Product data:

Product Type:	Primary Antibodies
Applications:	IHC, WB
Recommended Dilution:	WB: 500-2000 WB positive control: Human testis tissue, NIH/3T3 and 231 cell lysates IHC: 25-100 Positive control: Human breast cancer Predicted cell location: Nucleus
Reactivity:	Human, Mouse, Rat
Host:	Rabbit
Isotype:	IgG
Clonality:	Polyclonal
Immunogen:	Fusion protein of human UBE2Z
Formulation:	pH7.4 PBS, 0.05% NaN ₃ , 40% Glycerol
Purification:	Antigen affinity purification
Conjugation:	Unconjugated
Storage:	Store at -20°C.
Stability:	1 year
Predicted Protein Size:	38 kDa
Gene Name:	ubiquitin conjugating enzyme E2 Z
Database Link:	Entrez Gene 65264 Human Q9H832
Background:	This gene encodes an enzyme which ubiquitinates proteins which participate in signaling pathways and apoptosis.
Synonyms:	FLJ13855; HOYS7; USE1

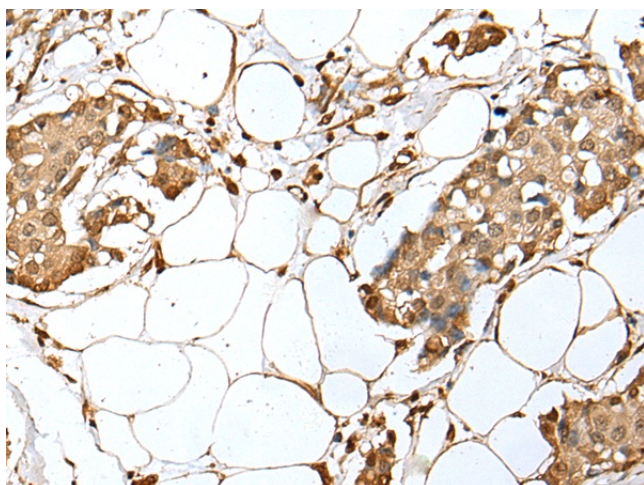


[View online »](#)

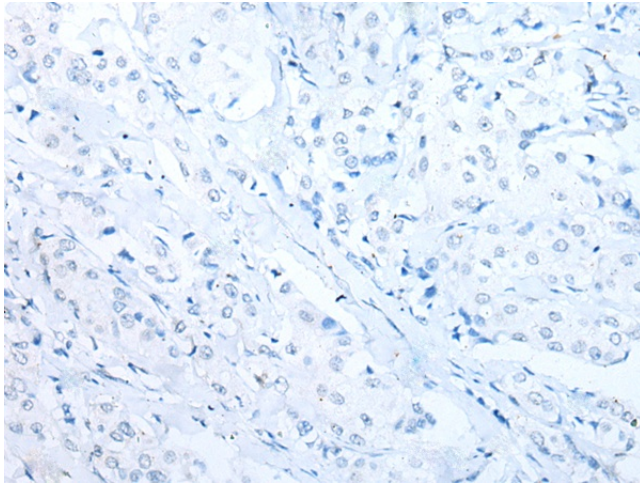
Product images:



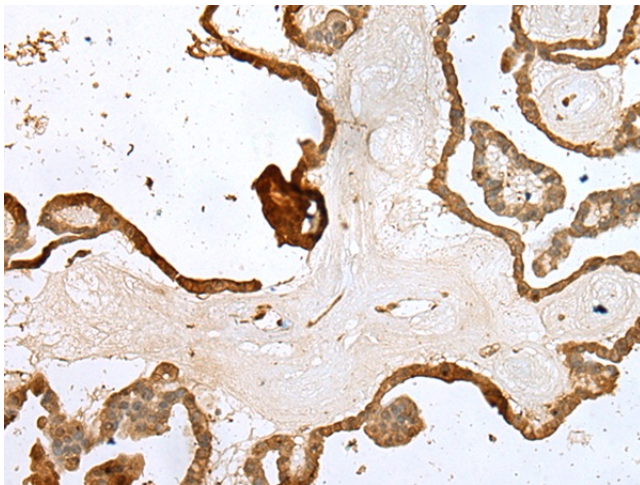
Gel: 8%SDS-PAGE
Lysate: 40 µg
Lane 1-3: Human testis tissue
NIH/3T3 and 231 cell lysates
Primary antibody: [TA369673] (UBE2Z Antibody)
at dilution 1/350
Secondary antibody: Goat anti rabbit IgG at
1/8000 dilution
Exposure time: 1 second



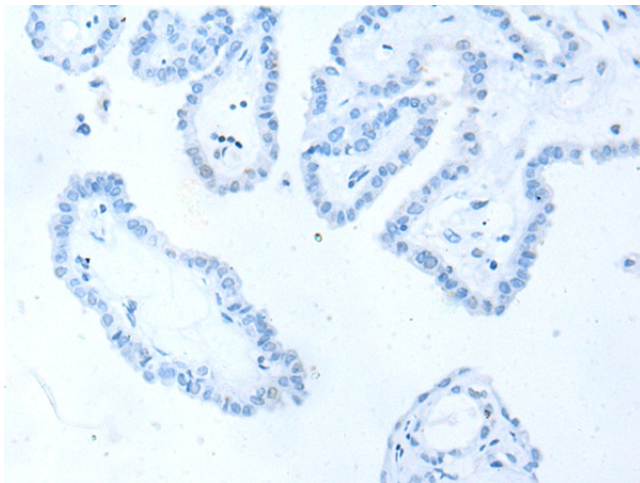
Immunohistochemistry of paraffin-embedded
Human breast cancer tissue using [TA369673]
(UBE2Z Antibody) at dilution 1/35 (Original
magnification: ×200)



Immunohistochemistry of paraffin-embedded Human breast cancer tissue using [TA369673] (UBE2Z Antibody) at dilution 1/35, treated with fusion protein. (Original magnification: $\times 200$)



Immunohistochemistry of paraffin-embedded Human thyroid cancer tissue using [TA369673] (UBE2Z Antibody) at dilution 1/35 (Original magnification: $\times 200$)



Immunohistochemistry of paraffin-embedded Human thyroid cancer tissue using [TA369673] (UBE2Z Antibody) at dilution 1/35, treated with fusion protein. (Original magnification: $\times 200$)