

Product datasheet for **TA369673**

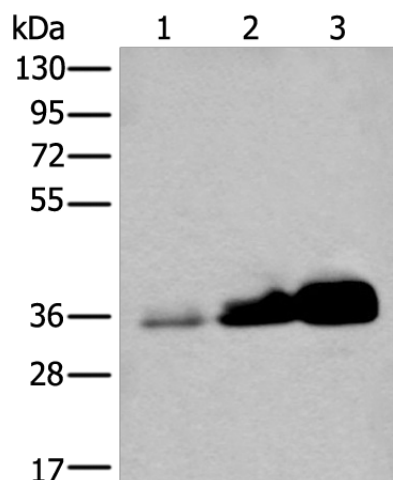
UBE2Z Rabbit Polyclonal Antibody

Product data:

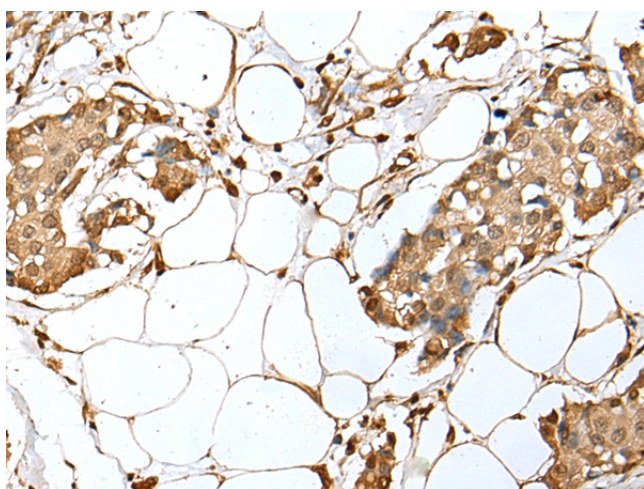
Product Type:	Primary Antibodies
Applications:	IHC, WB
Recommended Dilution:	WB: 500-2000 WB positive control: Human testis tissue,NIH/3T3 and 231 cell lysates IHC: 25-100 Positive control: Human breast cancer Predicted cell location: Nucleus
Reactivity:	Human, Mouse, Rat
Host:	Rabbit
Isotype:	IgG
Clonality:	Polyclonal
Immunogen:	Fusion protein of human UBE2Z
Formulation:	pH7.4 PBS, 0.05% NaN ₃ , 40% Glycerol
Concentration:	lot specific
Purification:	Antigen affinity purification
Conjugation:	Unconjugated
Storage:	Store at -20°C.
Stability:	1 year
Predicted Protein Size:	38 kDa
Gene Name:	ubiquitin conjugating enzyme E2 Z
Database Link:	Entrez Gene 65264 Human Q9H832
Background:	This gene encodes an enzyme which ubiquitinates proteins which participate in signaling pathways and apoptosis.
Synonyms:	FLJ13855; HOYS7; USE1



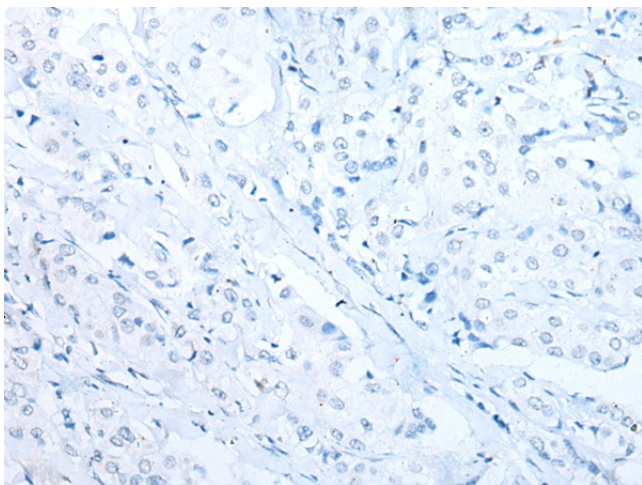
[View online »](#)

Product images:


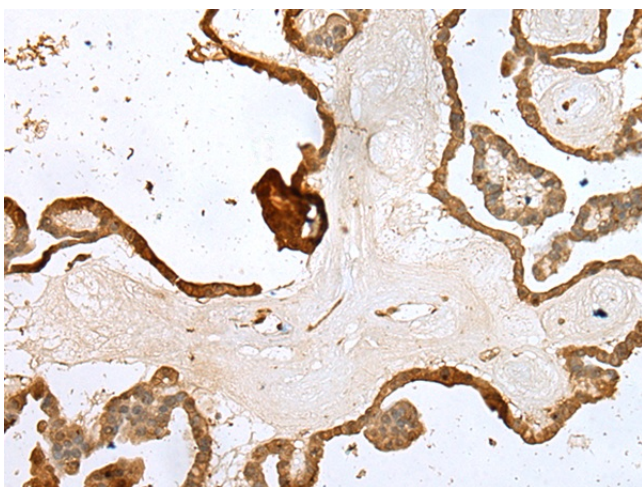
Gel: 8%SDS-PAGE
 Lysate: 40 μ g
 Lane 1-3: Human testis tissue
 NIH/3T3 and 231 cell lysates
 Primary antibody: TA369673 (UBE2Z Antibody) at
 dilution 1/350
 Secondary antibody: Goat anti rabbit IgG at
 1/8000 dilution
 Exposure time: 1 second



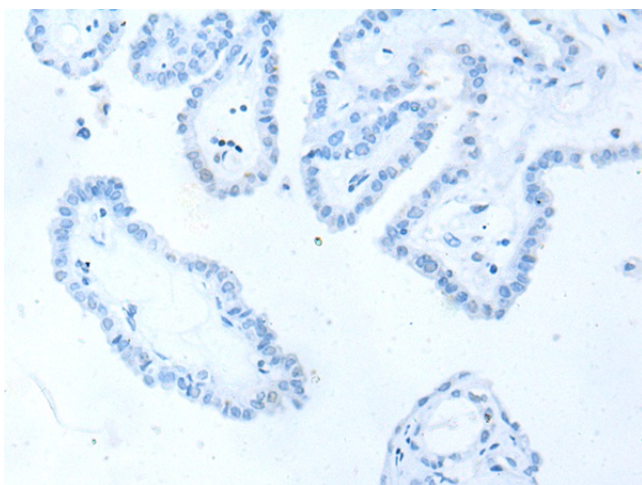
Immunohistochemistry of paraffin-embedded
 Human breast cancer tissue using TA369673
 (UBE2Z Antibody) at dilution 1/35 (Original
 magnification: \times 200)



Immunohistochemistry of paraffin-embedded Human breast cancer tissue using TA369673 (UBE2Z Antibody) at dilution 1/35, treated with fusion protein. (Original magnification: $\times 200$)



Immunohistochemistry of paraffin-embedded Human thyroid cancer tissue using TA369673 (UBE2Z Antibody) at dilution 1/35 (Original magnification: $\times 200$)



Immunohistochemistry of paraffin-embedded Human thyroid cancer tissue using TA369673 (UBE2Z Antibody) at dilution 1/35, treated with fusion protein. (Original magnification: $\times 200$)