

Product datasheet for **TA369669**

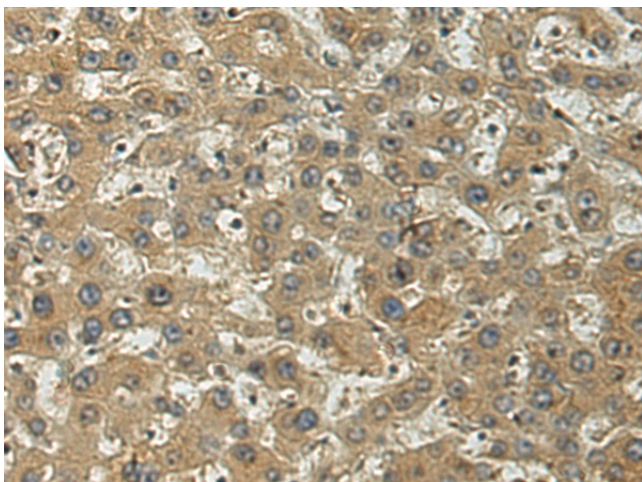
RWDD1 Rabbit Polyclonal Antibody

Product data:

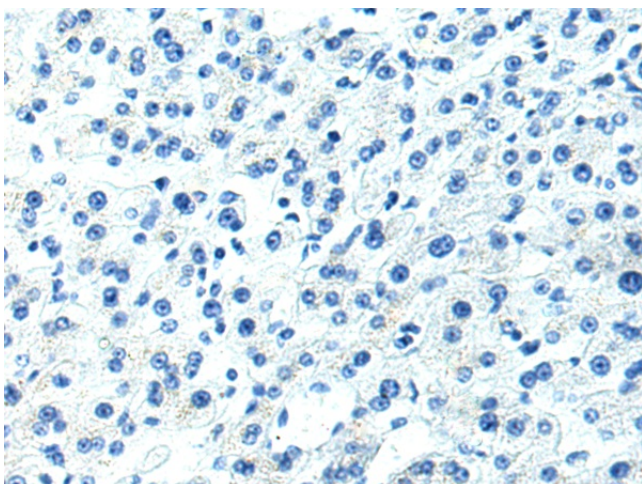
Product Type:	Primary Antibodies
Applications:	IHC
Recommended Dilution:	IHC: 150-300 Positive control: Human liver cancer Predicted cell location: Cytoplasm
Reactivity:	Human, Mouse, Rat
Host:	Rabbit
Isotype:	IgG
Clonality:	Polyclonal
Immunogen:	Fusion protein of human RWDD1
Formulation:	pH7.4 PBS, 0.05% NaN ₃ , 40% Glycerol
Concentration:	lot specific
Purification:	Antigen affinity purification
Conjugation:	Unconjugated
Storage:	Store at -20°C.
Stability:	1 year
Gene Name:	RWD domain containing 1
Database Link:	Entrez Gene 51389 Human Q9H446
Background:	Protects DRG2 from proteolytic degradation.
Synonyms:	CGI-24; DFRP2; PTD013



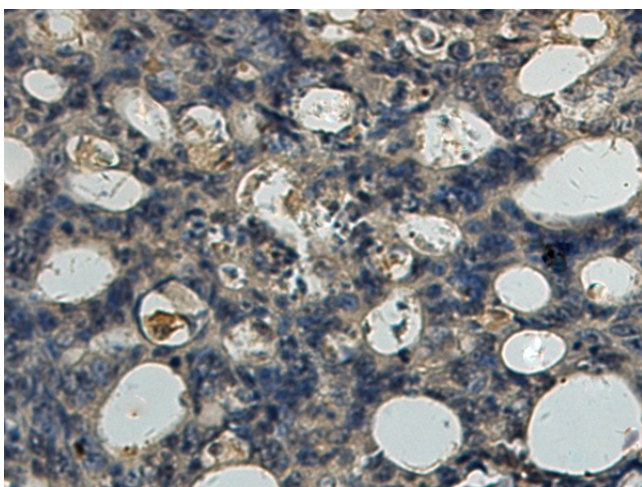
[View online »](#)

Product images:

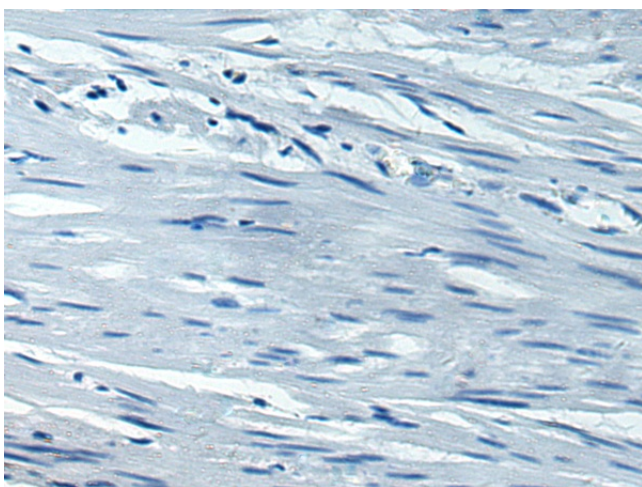
Immunohistochemistry of paraffin-embedded Human liver cancer tissue using TA369669 (RWDD1 Antibody) at dilution 1/150 (Original magnification: $\times 200$)



Immunohistochemistry of paraffin-embedded Human liver cancer tissue using TA369669 (RWDD1 Antibody) at dilution 1/150, treated with fusion protein. (Original magnification: $\times 200$)



Immunohistochemistry of paraffin-embedded Human colorectal cancer tissue using TA369669 (RWDD1 Antibody) at dilution 1/150 (Original magnification: $\times 200$)



Immunohistochemistry of paraffin-embedded Human colorectal cancer tissue using TA369669 (RWDD1 Antibody) at dilution 1/150, treated with fusion protein. (Original magnification: $\times 200$)