

## Product datasheet for **TA369663S**

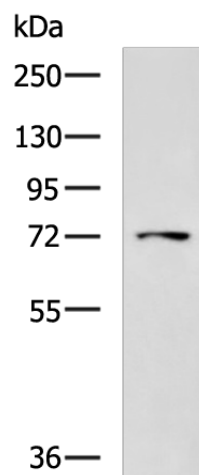
### LRRC45 Rabbit Polyclonal Antibody

#### Product data:

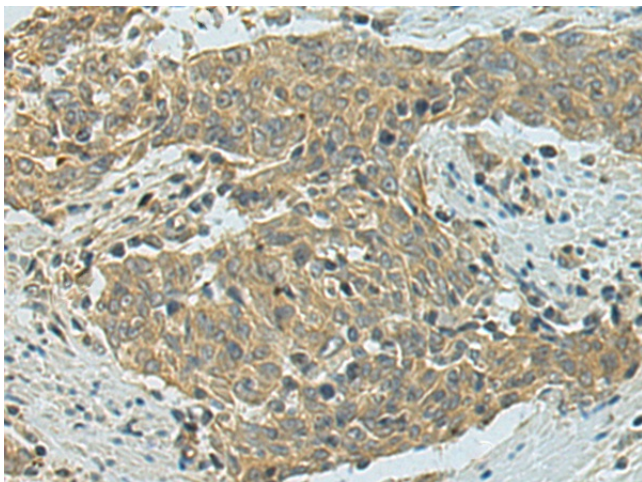
|                         |  |
|-------------------------|--|
| Product Type:           | Primary Antibodies   |
| Applications:           | IHC, WB  |
| Recommended Dilution:   | WB: 500-2000<br>WB positive control: HepG2 cell lysate<br>IHC: 100-300<br>Positive control: Human esophagus cancer<br>Predicted cell location: Cytoplasm |
| Reactivity:             | Human, Mouse   |
| Host:                   | Rabbit   |
| Isotype:                | IgG  |
| Clonality:              | Polyclonal   |
| Immunogen:              | Fusion protein of human LRRC45   |
| Formulation:            | pH7.4 PBS, 0.05% NaN <sub>3</sub> , 40% Glycerol   |
| Purification:           | Antigen affinity purification  |
| Conjugation:            | Unconjugated   |
| Storage:                | Store at -20°C.  |
| Stability:              | 1 year   |
| Predicted Protein Size: | 76 kDa   |
| Gene Name:              | leucine rich repeat containing 45  |
| Database Link:          | <a href="#">Entrez Gene 201255 Human Q96CN5</a>  |
| Background:             | Component of the proteinaceous fiber-like linker between two centrioles, required for centrosome cohesion.   |
| Synonyms:               | MGC20806   |



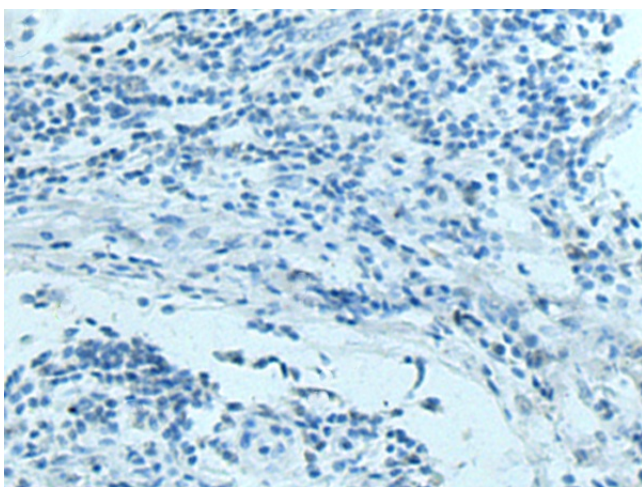
[View online »](#)

**Product images:**


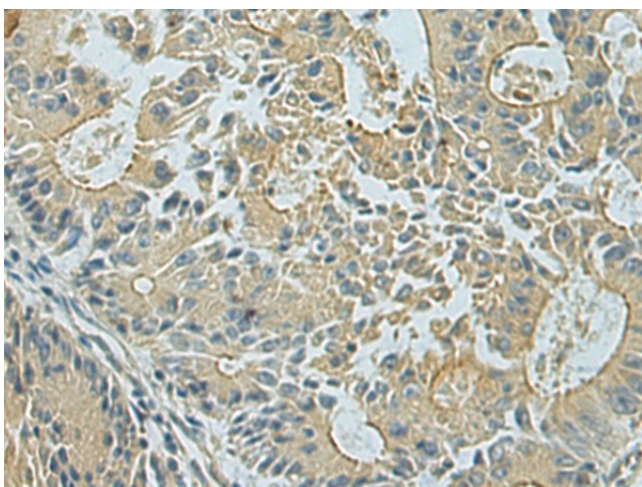
Gel: 8%SDS-PAGE  
 Lysate: 40 µg  
 Lane: HepG2 cell lysate  
 Primary antibody: [TA369663] (LRRC45 Antibody)  
 at dilution 1/1000  
 Secondary antibody: Goat anti rabbit IgG at  
 1/5000 dilution  
 Exposure time: 2 minutes



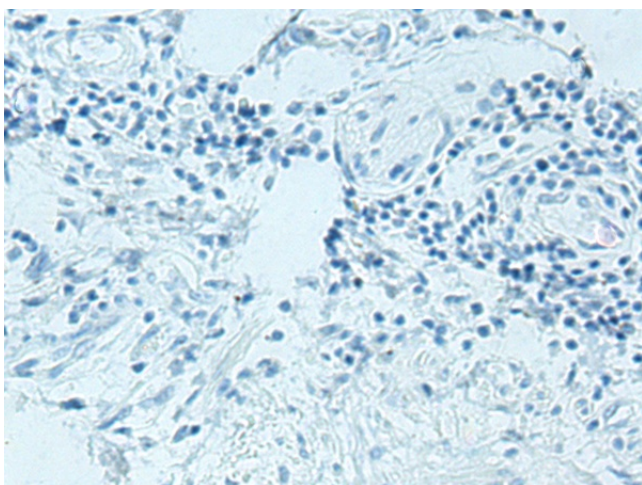
Immunohistochemistry of paraffin-embedded  
 Human esophagus cancer tissue using  
 [TA369663] (LRRC45 Antibody) at dilution 1/130  
 (Original magnification: ×200)



Immunohistochemistry of paraffin-embedded Human esophagus cancer tissue using [TA369663] (LRRC45 Antibody) at dilution 1/130, treated with fusion protein. (Original magnification: ×200)



Immunohistochemistry of paraffin-embedded Human colorectal cancer tissue using [TA369663] (LRRC45 Antibody) at dilution 1/130 (Original magnification: ×200)



Immunohistochemistry of paraffin-embedded Human colorectal cancer tissue using [TA369663] (LRRC45 Antibody) at dilution 1/130, treated with fusion protein. (Original magnification: ×200)