

## Product datasheet for **TA369661**

### SFXN1 Rabbit Polyclonal Antibody

#### Product data:

Product Type:	Primary Antibodies
Applications:	WB
Recommended Dilution:	WB: 200-1000 WB positive control: PC-3 MCF-7 and K562 cell Human cerebrum tissue Hepg2 cell Human fetal liver tissue
Reactivity:	Human, Mouse, Rat
Host:	Rabbit
Isotype:	IgG
Clonality:	Polyclonal
Immunogen:	Fusion protein of human SFXN1
Formulation:	pH7.4 PBS, 0.05% NaN <sub>3</sub> , 40% Glycerol
Concentration:	lot specific
Purification:	Antigen affinity purification
Conjugation:	Unconjugated
Storage:	Store at -20°C.
Stability:	1 year
Predicted Protein Size:	36 kDa
Gene Name:	sideroflexin 1
Database Link:	<a href="#">Entrez Gene 94081 Human Q9H9B4</a>



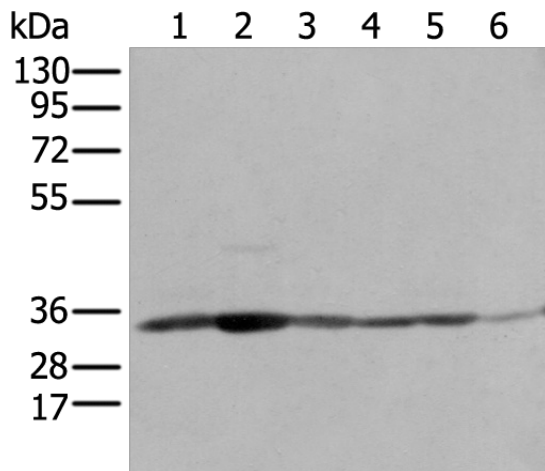
[View online »](#)

**Background:**

The sideroflexin (SFXN) family is comprised of SFXN1, SFXN2, SFXN3, SFXN4 and SFXN5. SFXN1, also designated tricarboxylate carrier protein TCC, is the most highly characterized family member. The ubiquitously expressed SFXN1 protein resides as an integral protein of the mitochondrial inner membrane. It functions as an essential component of the shuttle system that transports mitochondrial acetyl-CoA into the cytosol, where lipogenesis occurs. The SFXN1 gene is mutated in flexed-tail (f/f) mice, which display axial skeletal abnormalities and a transient embryonic and neonatal anemia characterized by pathologic intramitochondrial iron deposits in erythrocytes. Therefore, SFXN1 is also thought to facilitate the transport of a component required for iron utilization into mitochondria. All SFXN family members show expression in pancreatic islet cells. SFXN5 displays a citrate transport activity and is primarily expressed in brain.

**Synonyms:**

FLJ12876; TCC

**Product images:**


Gel: 8%SDS-PAGE

Lysate: 40 µg

Lane 1-6: PC-3

MCF-7 and K562 cell

Human cerebrum tissue

Hepg2 cell

Human fetal liver tissue

Primary antibody: TA369661 (SFXN1 Antibody) at dilution 1/200

Secondary antibody: Goat anti rabbit IgG at 1/8000 dilution

Exposure time: 1 second