

Product datasheet for **TA369660**

GLIPR1L1 Rabbit Polyclonal Antibody

Product data:

Product Type:	Primary Antibodies
Applications:	WB
Recommended Dilution:	WB: 500-2000 WB positive control: Human testis tissue
Reactivity:	Human
Host:	Rabbit
Isotype:	IgG
Clonality:	Polyclonal
Immunogen:	Fusion protein of human GLIPR1L1
Formulation:	pH7.4 PBS, 0.05% NaN ₃ , 40% Glycerol
Concentration:	lot specific
Purification:	Antigen affinity purification
Conjugation:	Unconjugated
Storage:	Store at -20°C.
Stability:	1 year
Predicted Protein Size:	27 kDa
Gene Name:	GLI pathogenesis related 1 like 1
Database Link:	Entrez Gene 256710 Human Q6UWM5

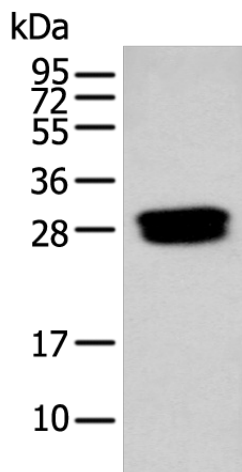
Background: The GLIPR1 (glioma pathogenesis-related 1) family consists of three core members, designated GLIPR1, GLIPR1L1 (GLIPR1-like protein 1) and GLIPR1L2, which form a distinct subgroup within the cysteine-rich secretory protein (CRISP), antigen 5 and pathogenesis-related 1 (CAP) superfamily. Each member of the CAP superfamily has a conserved N-terminal CAP domain and a distinct C-terminal extension. CAP superfamily proteins are hypothesized to have roles in immunity, cell adhesion, carcinogenesis and male fertility. GLIPR1L1 is a 242 amino acid secreted protein. Highly expressed in testis, GLIPR1L1 exists as two isoforms produced by alternative splicing events. GLIPR1L1 is encoded by a gene that maps to human chromosome 12q21.1 and mouse chromosome 10 D2.



[View online »](#)

Synonyms: ALKN2972; MGC26856; PRO7434

Product images:



Gel: 12%SDS-PAGE
Lysate: 40 μ g
Lane: Human testis tissue
Primary antibody: TA369660 (GLIPR1L1 Antibody)
at dilution 1/250
Secondary antibody: Goat anti rabbit IgG at
1/8000 dilution
Exposure time: 15 seconds