

Product datasheet for **TA369656**

EBI3 Rabbit Polyclonal Antibody

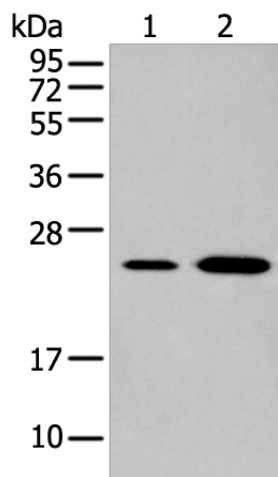
Product data:

Product Type:	Primary Antibodies
Applications:	IHC, WB
Recommended Dilution:	WB: 200-1000 WB positive control: RAW264.7 cell and Mouse kidney tissue IHC: 25-100 Positive control: Human prostate cancer Predicted cell location: Cytoplasm
Reactivity:	Human, Mouse
Host:	Rabbit
Isotype:	IgG
Clonality:	Polyclonal
Immunogen:	Fusion protein of human EBI3
Formulation:	pH7.4 PBS, 0.05% NaN ₃ , 40% Glycerol
Concentration:	lot specific
Purification:	Antigen affinity purification
Conjugation:	Unconjugated
Storage:	Store at -20°C.
Stability:	1 year
Predicted Protein Size:	25 kDa
Gene Name:	Epstein-Barr virus induced 3
Database Link:	Entrez Gene 10148 Human Q14213
Background:	This gene was identified by its induced expression in B lymphocytes in response Epstein-Barr virus infection. It encodes a secreted glycoprotein belonging to the hematopoietin receptor family, and heterodimerizes with a 28 kDa protein to form interleukin 27 (IL-27). IL-27 regulates T cell and inflammatory responses, in part by activating the Jak/STAT pathway of CD4 ⁺ T cells.
Synonyms:	IL-27B; IL27B



[View online »](#)

Product images:



Gel: 12%SDS-PAGE

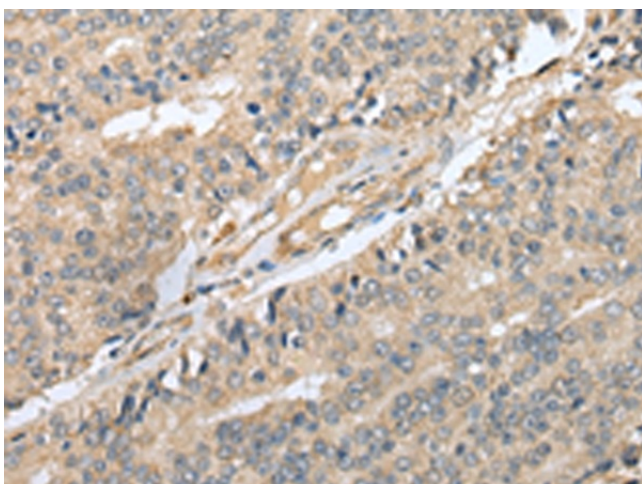
Lysate: 40 μ g

Lane 1-2: RAW264.7 cell and Mouse kidney tissue

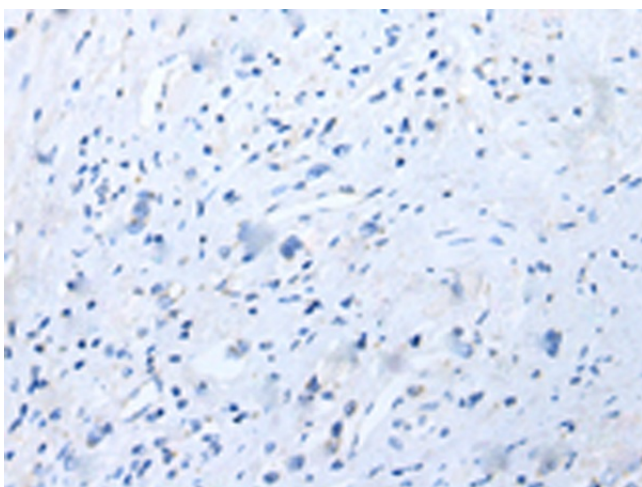
Primary antibody: TA369656 (EBI3 Antibody) at dilution 1/200

Secondary antibody: Goat anti rabbit IgG at 1/8000 dilution

Exposure time: 3 seconds



Immunohistochemistry of paraffin-embedded Human prostate cancer tissue using TA369656 (EBI3 Antibody) at dilution 1/25 (Original magnification: $\times 200$)



Immunohistochemistry of paraffin-embedded Human prostate cancer tissue using TA369656 (EBI3 Antibody) at dilution 1/25, treated with fusion protein. (Original magnification: ×200)