

Product datasheet for **TA369655S**

SKAR (POLDIP3) Rabbit Polyclonal Antibody

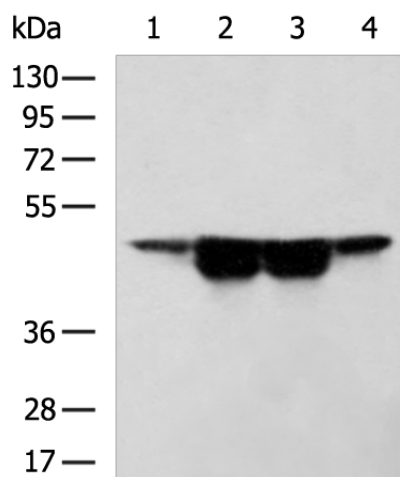
Product data:

Product Type:	Primary Antibodies
Applications:	IHC, WB
Recommended Dilution:	WB: 500-2000 WB positive control: Mouse brain tissue, Jurkat, RAW264.7, C2C12 cell lysates IHC: 50-200 Positive control: Human gastric cancer Predicted cell location: Nucleus
Reactivity:	Human, Mouse
Host:	Rabbit
Isotype:	IgG
Clonality:	Polyclonal
Immunogen:	Fusion protein of human POLDIP3
Formulation:	pH7.4 PBS, 0.05% NaN ₃ , 40% Glycerol
Purification:	Antigen affinity purification
Conjugation:	Unconjugated
Storage:	Store at -20°C.
Stability:	1 year
Predicted Protein Size:	46 kDa
Gene Name:	polymerase (DNA) delta interacting protein 3
Database Link:	Entrez Gene 84271 Human Q9BY77
Background:	This gene encodes an RRM (RNA recognition motif)-containing protein that participates in the regulation of translation by recruiting ribosomal protein S6 kinase beta-1 to mRNAs. Alternative splicing results in multiple transcript variants.
Synonyms:	KIAA1649; p46; PDIP46; SKAR

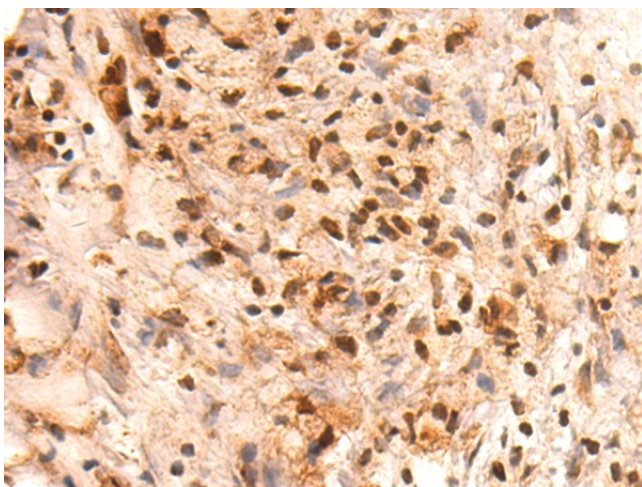


[View online »](#)

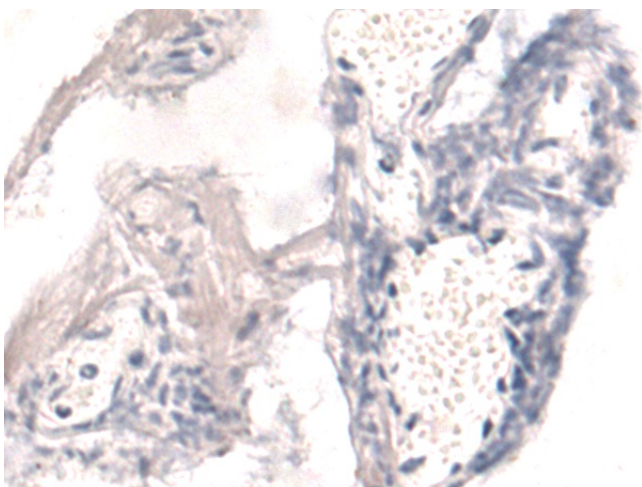
Product images:



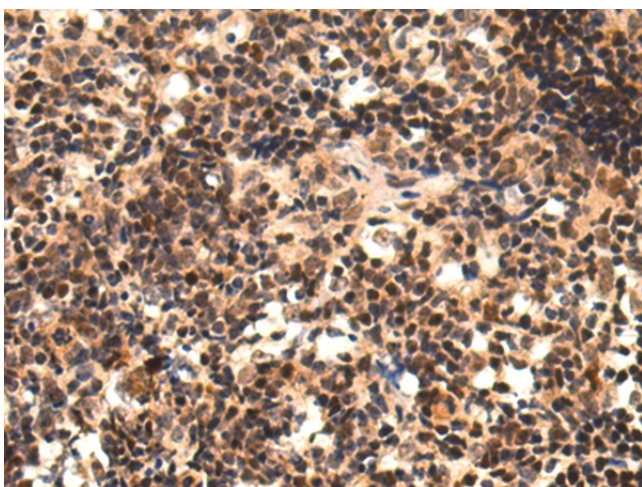
Gel: 8%SDS-PAGE
Lysate: 40 μ g
Lane 1-4: Mouse brain tissue
Jurkat
RAW264.7
C2C12 cell lysates
Primary antibody: [TA369655] (POLDIP3
Antibody) at dilution 1/300
Secondary antibody: Goat anti rabbit IgG at
1/5000 dilution
Exposure time: 30 seconds



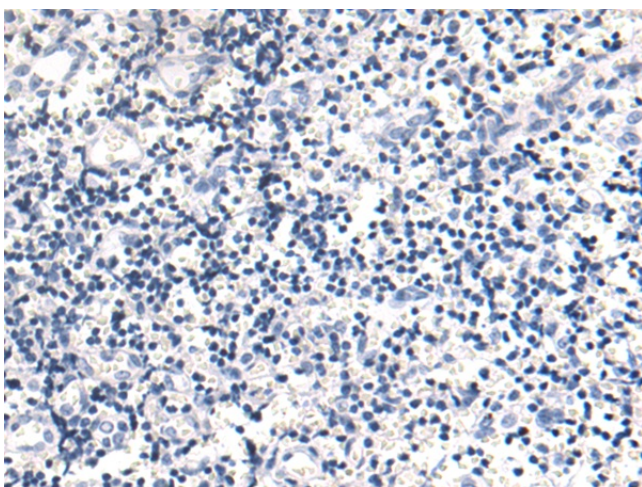
Immunohistochemistry of paraffin-embedded
Human gastric cancer tissue using [TA369655]
(POLDIP3 Antibody) at dilution 1/45 (Original
magnification: \times 200)



Immunohistochemistry of paraffin-embedded Human gastric cancer tissue using [TA369655] (POLDIP3 Antibody) at dilution 1/45, treated with fusion protein. (Original magnification: $\times 200$)



Immunohistochemistry of paraffin-embedded Human thyroid cancer tissue using [TA369655] (POLDIP3 Antibody) at dilution 1/45 (Original magnification: $\times 200$)



Immunohistochemistry of paraffin-embedded Human thyroid cancer tissue using [TA369655] (POLDIP3 Antibody) at dilution 1/45, treated with fusion protein. (Original magnification: $\times 200$)