

## Product datasheet for **TA369651S**

### ATP6V1E2 Rabbit Polyclonal Antibody

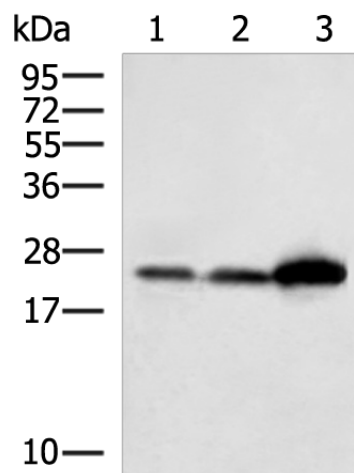
#### Product data:

Product Type:	Primary Antibodies
Applications:	IHC, WB
Recommended Dilution:	WB: 500-2000 WB positive control: TM4 cell, Hela cell, Mouse brain tissue lysates IHC: 100-300 Positive control: Human liver cancer Predicted cell location: Cytoplasm
Reactivity:	Human, Mouse
Host:	Rabbit
Isotype:	IgG
Clonality:	Polyclonal
Immunogen:	Fusion protein of human ATP6V1E2
Formulation:	pH7.4 PBS, 0.05% NaN <sub>3</sub> , 40% Glycerol
Purification:	Antigen affinity purification
Conjugation:	Unconjugated
Storage:	Store at -20°C.
Stability:	1 year
Predicted Protein Size:	26 kDa
Gene Name:	ATPase H <sup>+</sup> transporting V1 subunit E2
Database Link:	<a href="#">Entrez Gene 90423 Human Q96A05</a>
Background:	Subunit of the peripheral V1 complex of vacuolar ATPase essential for assembly or catalytic function. V-ATPase is responsible for acidifying a variety of intracellular compartments in eukaryotic cells. This isoform is essential for energy coupling involved in acidification of acrosome.
Synonyms:	ATP6E1; ATP6EL2; ATP6V1EL2; MGC9341; VMA4

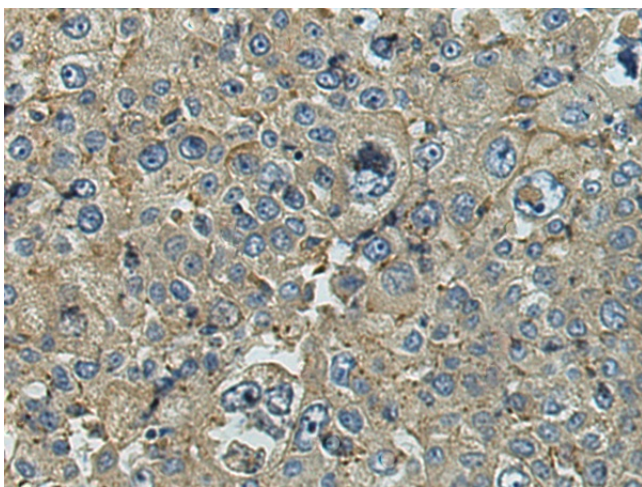


[View online »](#)

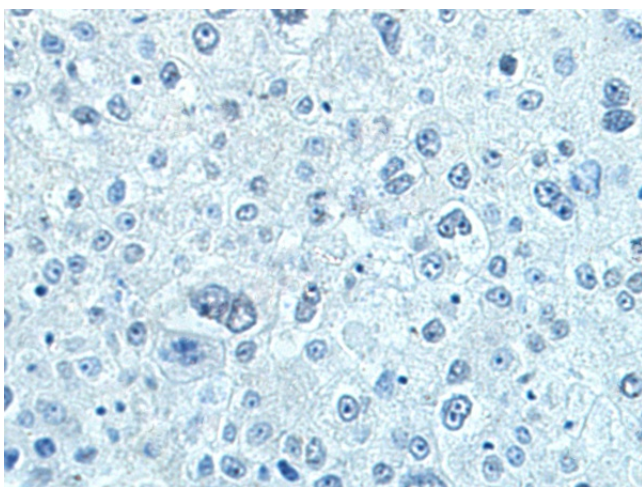
## Product images:



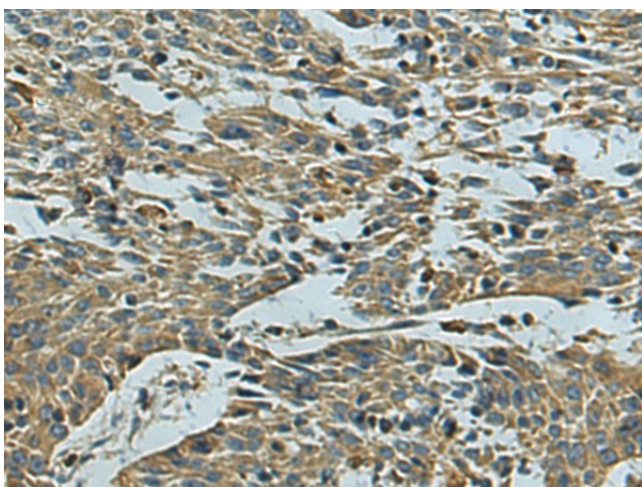
Gel: 12%SDS-PAGE  
Lysate: 40 µg  
Lane 1-3: TM4 cell  
HeLa cell  
Mouse brain tissue lysates  
Primary antibody: [TA369651] (ATP6V1E2 Antibody) at dilution 1/450  
Secondary antibody: Goat anti rabbit IgG at 1/5000 dilution  
Exposure time: 1 minute



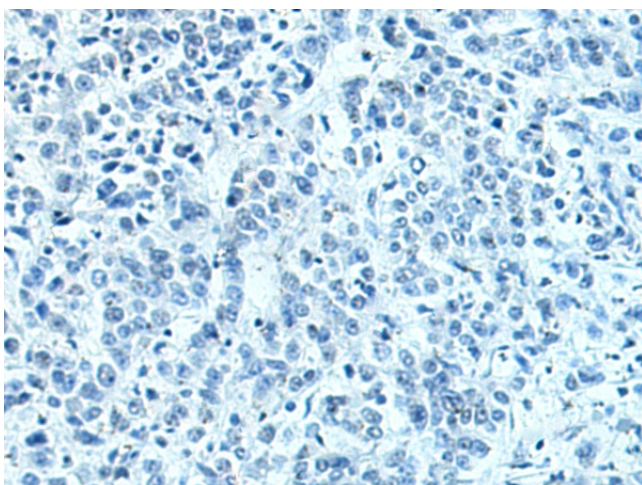
Immunohistochemistry of paraffin-embedded Human liver cancer tissue using [TA369651] (ATP6V1E2 Antibody) at dilution 1/120 (Original magnification: ×200)



Immunohistochemistry of paraffin-embedded Human liver cancer tissue using [TA369651] (ATP6V1E2 Antibody) at dilution 1/120, treated with fusion protein. (Original magnification: x200)



Immunohistochemistry of paraffin-embedded Human colorectal cancer tissue using [TA369651] (ATP6V1E2 Antibody) at dilution 1/120 (Original magnification: x200)



Immunohistochemistry of paraffin-embedded Human colorectal cancer tissue using [TA369651] (ATP6V1E2 Antibody) at dilution 1/120, treated with fusion protein. (Original magnification: x200)