

Product datasheet for **TA369651**

ATP6V1E2 Rabbit Polyclonal Antibody

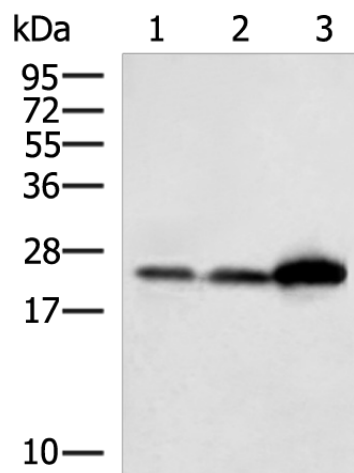
Product data:

Product Type:	Primary Antibodies
Applications:	IHC, WB
Recommended Dilution:	WB: 500-2000 WB positive control: TM4 cell, Hela cell, Mouse brain tissue lysates IHC: 100-300 Positive control: Human liver cancer Predicted cell location: Cytoplasm
Reactivity:	Human, Mouse
Host:	Rabbit
Isotype:	IgG
Clonality:	Polyclonal
Immunogen:	Fusion protein of human ATP6V1E2
Formulation:	pH7.4 PBS, 0.05% NaN ₃ , 40% Glycerol
Concentration:	lot specific
Purification:	Antigen affinity purification
Conjugation:	Unconjugated
Storage:	Store at -20°C.
Stability:	1 year
Predicted Protein Size:	26 kDa
Gene Name:	ATPase H ⁺ transporting V1 subunit E2
Database Link:	Entrez Gene 90423 Human Q96A05
Background:	Subunit of the peripheral V1 complex of vacuolar ATPase essential for assembly or catalytic function. V-ATPase is responsible for acidifying a variety of intracellular compartments in eukaryotic cells. This isoform is essential for energy coupling involved in acidification of acrosome.
Synonyms:	ATP6E1; ATP6EL2; ATP6V1EL2; MGC9341; VMA4

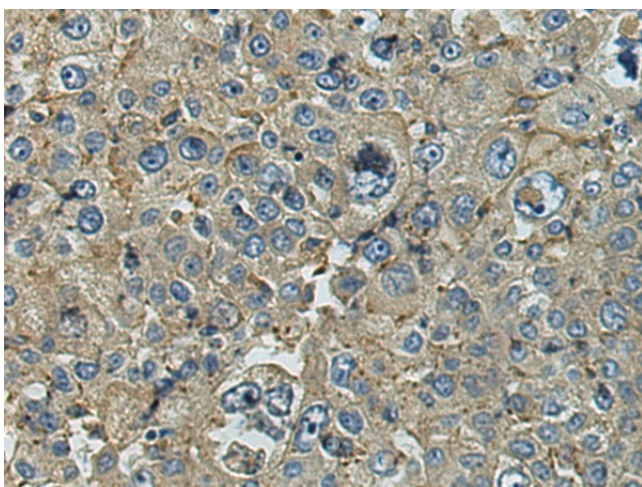


[View online »](#)

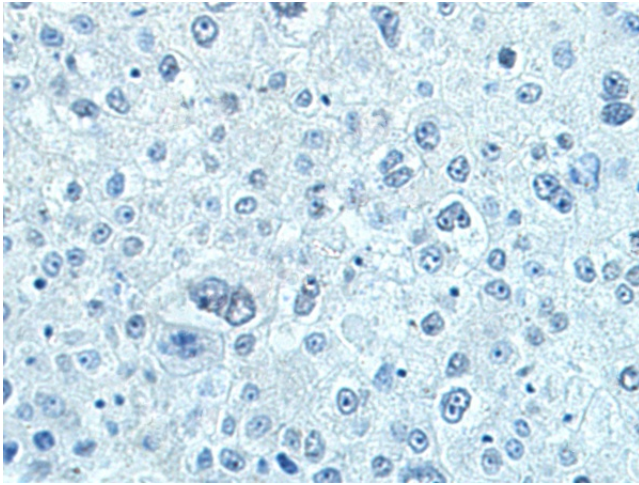
Product images:



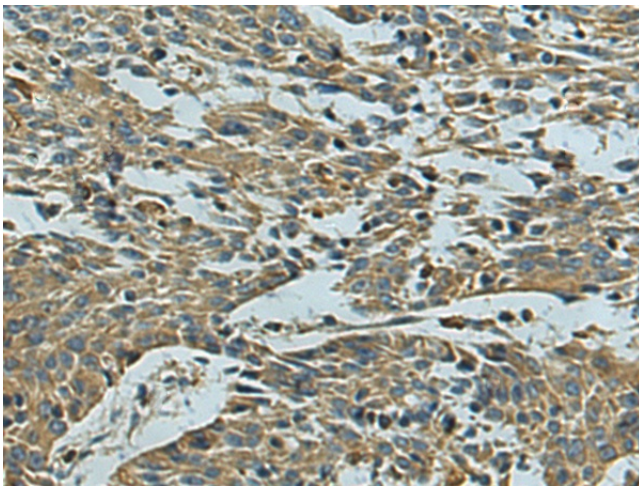
Gel: 12%SDS-PAGE
Lysate: 40 μ g
Lane 1-3: TM4 cell
Hela cell
Mouse brain tissue lysates
Primary antibody: TA369651 (ATP6V1E2 Antibody)
at dilution 1/450
Secondary antibody: Goat anti rabbit IgG at
1/5000 dilution
Exposure time: 1 minute



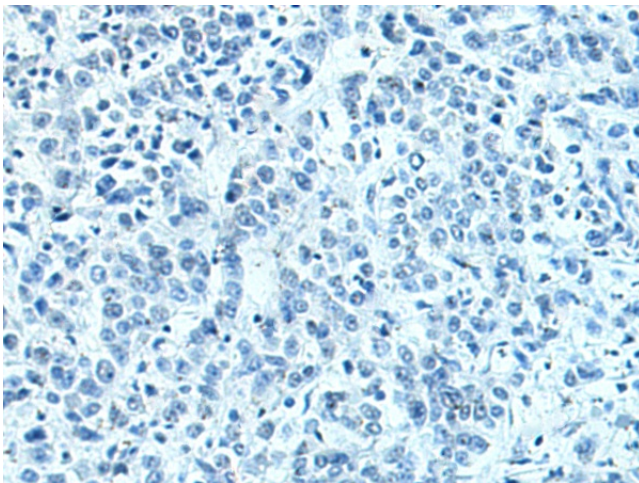
Immunohistochemistry of paraffin-embedded
Human liver cancer tissue using TA369651
(ATP6V1E2 Antibody) at dilution 1/120 (Original
magnification: \times 200)



Immunohistochemistry of paraffin-embedded Human liver cancer tissue using TA369651 (ATP6V1E2 Antibody) at dilution 1/120, treated with fusion protein. (Original magnification: $\times 200$)



Immunohistochemistry of paraffin-embedded Human colorectal cancer tissue using TA369651 (ATP6V1E2 Antibody) at dilution 1/120 (Original magnification: $\times 200$)



Immunohistochemistry of paraffin-embedded Human colorectal cancer tissue using TA369651 (ATP6V1E2 Antibody) at dilution 1/120, treated with fusion protein. (Original magnification: $\times 200$)