

Product datasheet for **TA369650**

PRTFDC1 Rabbit Polyclonal Antibody

Product data:

Product Type:	Primary Antibodies
Applications:	IHC, WB
Recommended Dilution:	WB: 200-1000 WB positive control: Human Ovarian cancer (granulosa cell tumor)tissue□Human testis tissue IHC: 25-100 Positive control: Human lung cancer Predicted cell location: Cytoplasm
Reactivity:	Human
Host:	Rabbit
Isotype:	IgG
Clonality:	Polyclonal
Immunogen:	Full length fusion protein
Formulation:	pH7.4 PBS, 0.05% NaN ₃ , 40% Glycerol
Concentration:	lot specific
Purification:	Antigen affinity purification
Conjugation:	Unconjugated
Storage:	Store at -20°C.
Stability:	1 year
Predicted Protein Size:	26 kDa
Gene Name:	phosphoribosyl transferase domain containing 1
Database Link:	Entrez Gene 56952 Human Q9NRG1



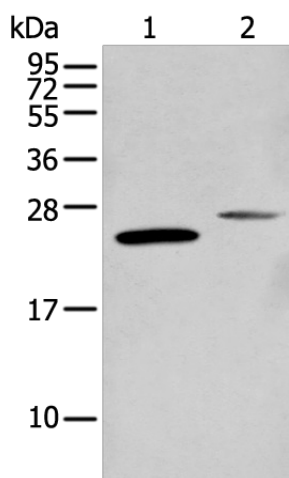
[View online »](#)

Background:

PRTFDC1 (phosphoribosyltransferase domain-containing protein 1), also known as HHGP, is a 225 amino acid protein that belongs to the purine/pyrimidine phosphoribosyltransferase family. The functions of PRTFDC1 are not well understood; however it has been suggested that it is frequently silenced in oral squamous-cell carcinomas by aberrant promoter hypermethylation. Conserved in vertebrates, PRTFDC1 is suggested to be a possible tumor-suppressor. PRTFDC1 is encoded by a gene which maps to chromosome 10. Spanning nearly 135 million base pairs, chromosome 10 makes up approximately 4.5% of the total DNA in cells and encodes nearly 1,200 genes. Three isoforms of PRTFDC1 exist due to alternative splicing events. Has low, barely detectable phosphoribosyltransferase activity (in vitro). Binds GMP, IMP and alpha-D-5-phosphoribosyl 1-pyrophosphate (PRPP). Is not expected to contribute to purine metabolism or GMP salvage.

Synonyms:

FLJ11888; HHGP

Product images:

Gel: 12%SDS-PAGE

Lysate: 40 µg

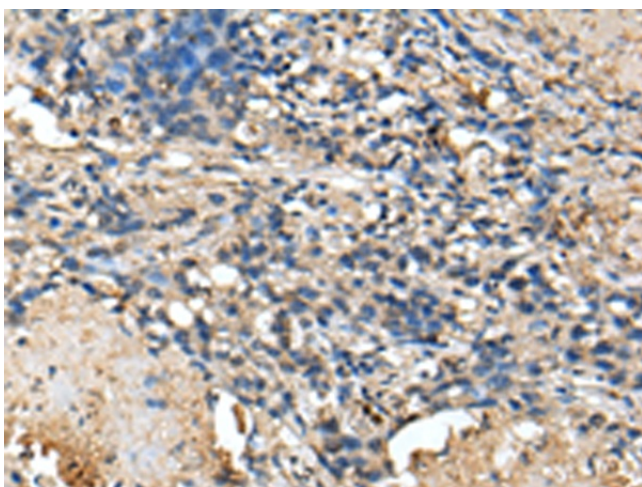
Lane 1-2: Human Ovarian cancer (granulosa cell tumor) tissue

Human testis tissue

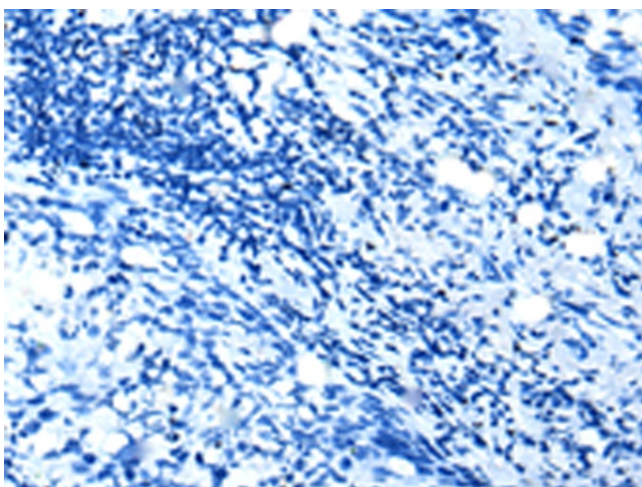
Primary antibody: TA369650 (PRTFDC1 Antibody) at dilution 1/250

Secondary antibody: Goat anti rabbit IgG at 1/8000 dilution

Exposure time: 1 minute



Immunohistochemistry of paraffin-embedded Human lung cancer tissue using TA369650 (PRTFDC1 Antibody) at dilution 1/25 (Original magnification: $\times 200$)



Immunohistochemistry of paraffin-embedded Human lung cancer tissue using TA369650 (PRTFDC1 Antibody) at dilution 1/25, treated with fusion protein. (Original magnification: $\times 200$)