

## Product datasheet for **TA369648S**

### FAM3D Rabbit Polyclonal Antibody

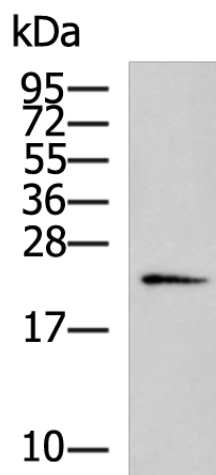
#### Product data:

Product Type:	Primary Antibodies
Applications:	IHC, WB
Recommended Dilution:	WB: 500-2000 WB positive control: HT-29 cell lysate IHC: 100-200 Positive control: Human liver cancer Predicted cell location: Secreted
Reactivity:	Human
Host:	Rabbit
Isotype:	IgG
Clonality:	Polyclonal
Immunogen:	Fusion protein of human FAM3D
Formulation:	pH7.4 PBS, 0.05% NaN <sub>3</sub> , 40% Glycerol
Purification:	Antigen affinity purification
Conjugation:	Unconjugated
Storage:	Store at -20°C.
Stability:	1 year
Predicted Protein Size:	25 kDa
Gene Name:	family with sequence similarity 3 member D
Database Link:	<a href="#">Entrez Gene 131177 Human Q96BQ1</a>
Background:	FAM3D, also known as EF-7, belongs to the novel cytokine-like family whose members are secreted four-helix bundle proteins. Human FAM3D is abundantly expressed in placenta as a 224 amino acid (aa) residue precursor with a 25 aa signal sequence. The function of this protein remains unknown.
Synonyms:	EF7; OIT1

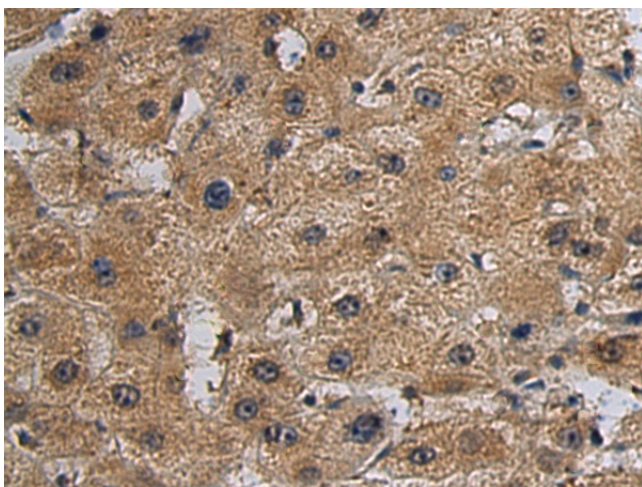


[View online »](#)

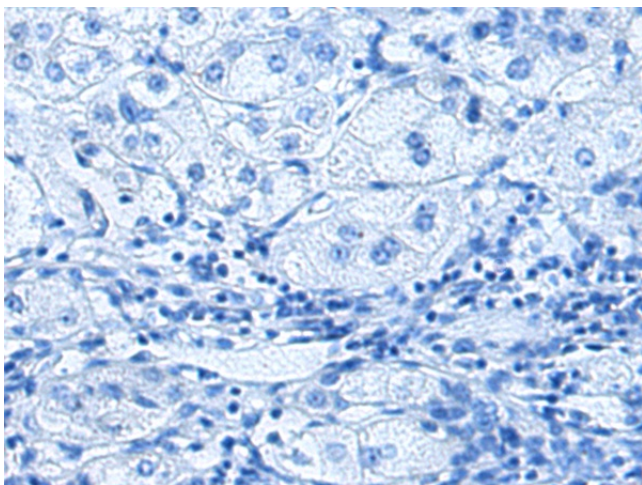
## Product images:



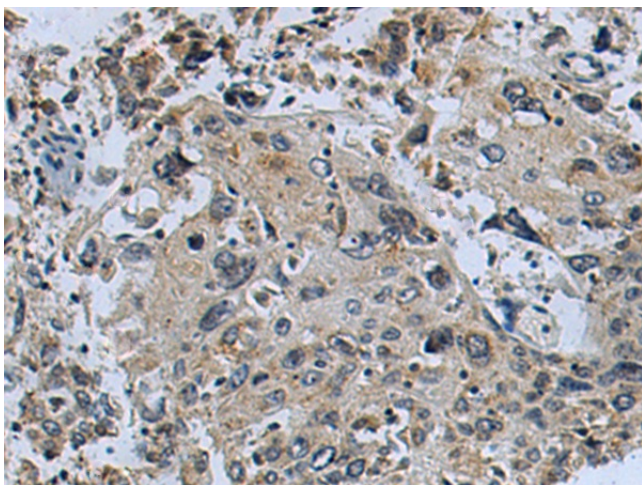
Gel: 12%SDS-PAGE  
Lysate: 40  $\mu$ g  
Lane: HT-29 cell lysate  
Primary antibody: [TA369648] (FAM3D Antibody) at dilution 1/800  
Secondary antibody: Goat anti rabbit IgG at 1/5000 dilution  
Exposure time: 2 minutes



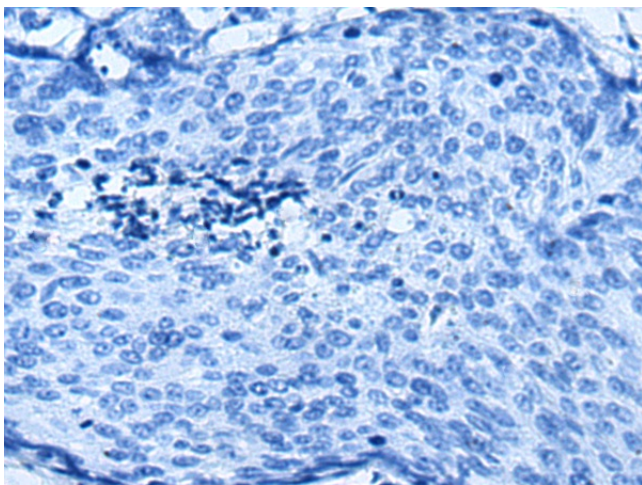
Immunohistochemistry of paraffin-embedded Human liver cancer tissue using [TA369648] (FAM3D Antibody) at dilution 1/110 (Original magnification:  $\times$ 200)



Immunohistochemistry of paraffin-embedded Human liver cancer tissue using [TA369648] (FAM3D Antibody) at dilution 1/110, treated with fusion protein. (Original magnification:  $\times 200$ )



Immunohistochemistry of paraffin-embedded Human cervical cancer tissue using [TA369648] (FAM3D Antibody) at dilution 1/110 (Original magnification:  $\times 200$ )



Immunohistochemistry of paraffin-embedded Human cervical cancer tissue using [TA369648] (FAM3D Antibody) at dilution 1/110, treated with fusion protein. (Original magnification:  $\times 200$ )