

Product datasheet for **TA369646**

SLD5 (GINS4) Rabbit Polyclonal Antibody

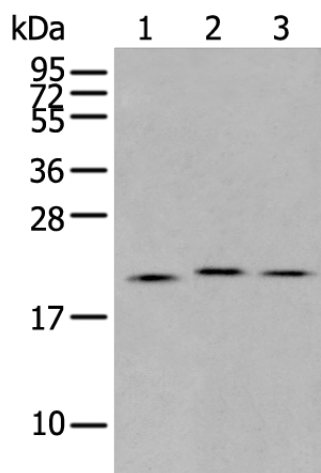
Product data:

Product Type:	Primary Antibodies
Applications:	IHC, WB
Recommended Dilution:	WB: 200-1000 WB positive control: Mouse thymus tissue□PC-3 and 293T cell IHC: 25-100 Positive control: Human esophagus cancer Predicted cell location: Cytoplasm and Nucleus
Reactivity:	Human, Mouse, Rat
Host:	Rabbit
Isotype:	IgG
Clonality:	Polyclonal
Immunogen:	Full length fusion protein
Formulation:	pH7.4 PBS, 0.05% NaN ₃ , 40% Glycerol
Concentration:	lot specific
Purification:	Antigen affinity purification
Conjugation:	Unconjugated
Storage:	Store at -20°C.
Stability:	1 year
Predicted Protein Size:	26 kDa
Gene Name:	GINS complex subunit 4
Database Link:	Entrez Gene 84296 Human Q9BRT9
Background:	The yeast heterotetrameric GINS complex is made up of Sld5, Psf1 (GINS1; MIM 610608), Psf2 (GINS2; MIM 610609), and Psf3 (GINS3; MIM 610610). The formation of the GINS complex is essential for the initiation of DNA replication in yeast and Xenopus egg extracts (Ueno et al., 2005 [PubMed 16287864]). See GINS1 for additional information about the GINS complex.
Synonyms:	MGC14799; SLD5



[View online »](#)

Product images:



Gel: 12%SDS-PAGE

Lysate: 40 μ g

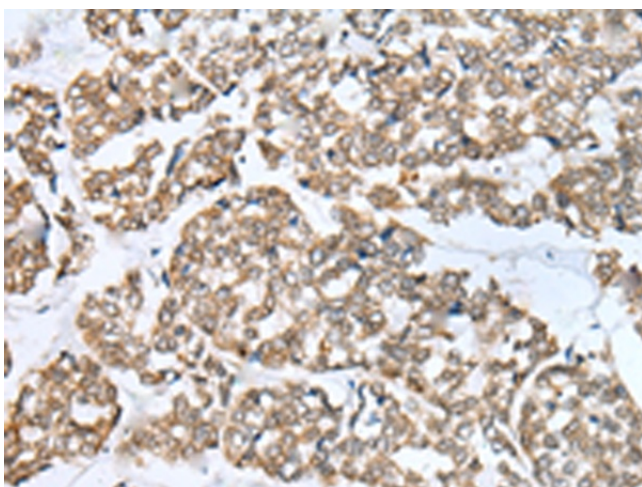
Lane 1-3: Mouse thymus tissue

PC-3 and 293T cell

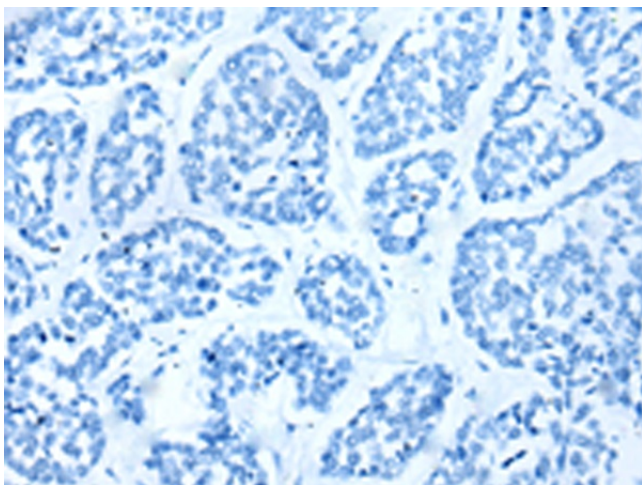
Primary antibody: TA369646 (GINS4 Antibody) at dilution 1/350

Secondary antibody: Goat anti rabbit IgG at 1/8000 dilution

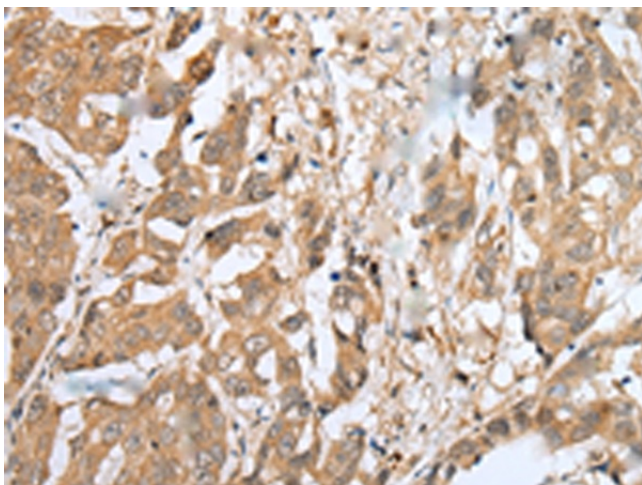
Exposure time: 40 seconds



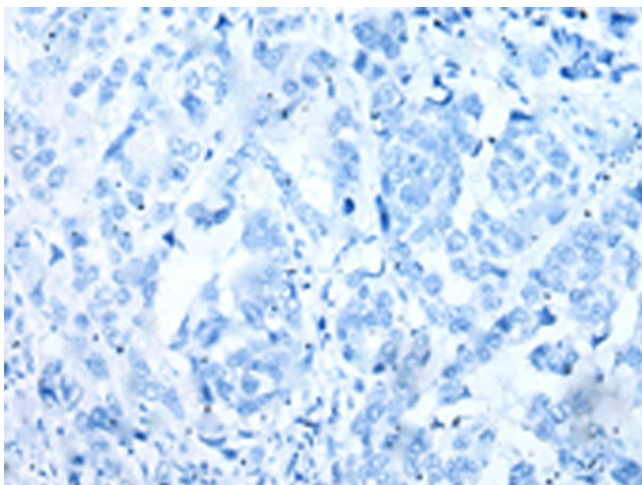
Immunohistochemistry of paraffin-embedded Human esophagus cancer tissue using TA369646 (GINS4 Antibody) at dilution 1/30 (Original magnification: \times 200)



Immunohistochemistry of paraffin-embedded Human esophagus cancer tissue using TA369646 (GINS4 Antibody) at dilution 1/30, treated with fusion protein. (Original magnification: ×200)



Immunohistochemistry of paraffin-embedded Human breast cancer tissue using TA369646 (GINS4 Antibody) at dilution 1/30 (Original magnification: ×200)



Immunohistochemistry of paraffin-embedded Human breast cancer tissue using TA369646 (GINS4 Antibody) at dilution 1/30, treated with fusion protein. (Original magnification: ×200)