

## Product datasheet for **TA369643**

### ZNF672 Rabbit Polyclonal Antibody

#### Product data:

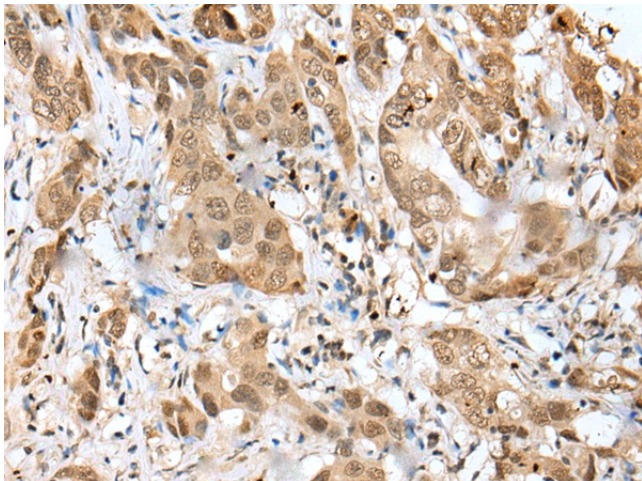
Product Type:	Primary Antibodies
Applications:	IHC
Recommended Dilution:	IHC: 25-100 Positive control: Human breast cancer Predicted cell location: Nucleus and Cytoplasm
Reactivity:	Human
Host:	Rabbit
Isotype:	IgG
Clonality:	Polyclonal
Immunogen:	Full length fusion protein
Formulation:	pH7.4 PBS, 0.05% NaN <sub>3</sub> , 40% Glycerol
Concentration:	lot specific
Purification:	Antigen affinity purification
Conjugation:	Unconjugated
Storage:	Store at -20°C.
Stability:	1 year
Gene Name:	zinc finger protein 672
Database Link:	<a href="#">Entrez Gene 79894 Human Q499Z4</a>

**Background:** ZNF672 (zinc finger protein 672) is a 452 amino acid nuclear protein that may be involved in transcriptional regulation. Belonging to the Krüppel C2H2-type zinc-finger protein family, ZNF672 contains 14 C2H2-type zinc fingers. ZNF672 exists as two alternatively spliced isoforms, and is encoded by a gene that maps to human chromosome 1q44. Human chromosome 1 spans 260 million base pairs, contains over 3,000 genes, comprises nearly 8% of the human genome, and houses a large number of disease-associated genes, including those that are involved in familial adenomatous polyposis, Stickler syndrome, Parkinson's disease, Gaucher disease, schizophrenia and Usher syndrome.

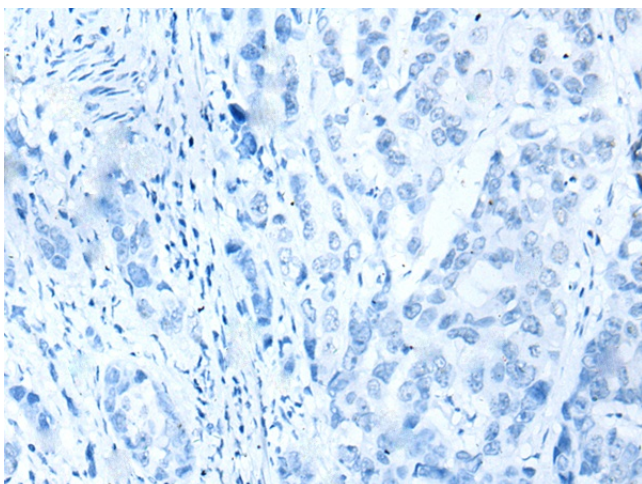
**Synonyms:** FLJ22301



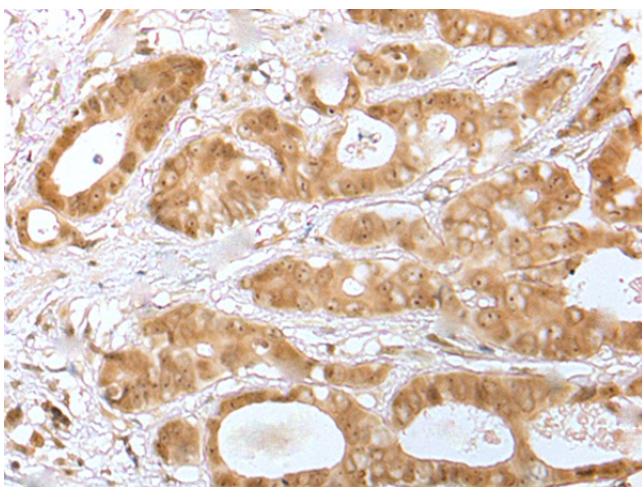
[View online »](#)

**Product images:**

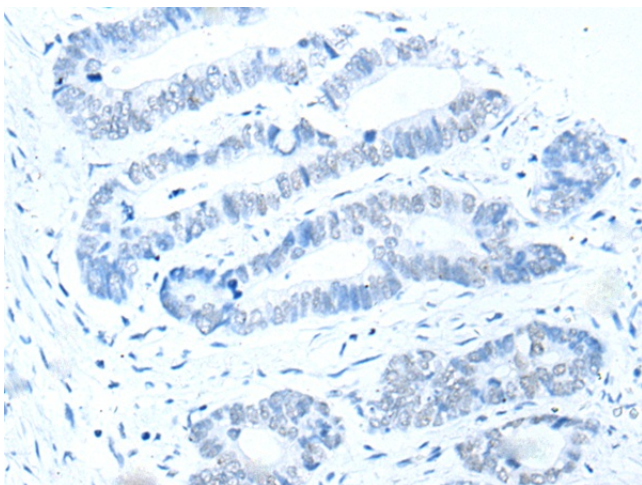
Immunohistochemistry of paraffin-embedded Human breast cancer tissue using TA369643 (ZNF672 Antibody) at dilution 1/25 (Original magnification:  $\times 200$ )



Immunohistochemistry of paraffin-embedded Human breast cancer tissue using TA369643 (ZNF672 Antibody) at dilution 1/25, treated with fusion protein. (Original magnification:  $\times 200$ )



Immunohistochemistry of paraffin-embedded Human gastric cancer tissue using TA369643 (ZNF672 Antibody) at dilution 1/25 (Original magnification:  $\times 200$ )



Immunohistochemistry of paraffin-embedded Human gastric cancer tissue using TA369643 (ZNF672 Antibody) at dilution 1/25, treated with fusion protein. (Original magnification:  $\times 200$ )