

## Product datasheet for **TA369641S**

### FKBP7 Rabbit Polyclonal Antibody

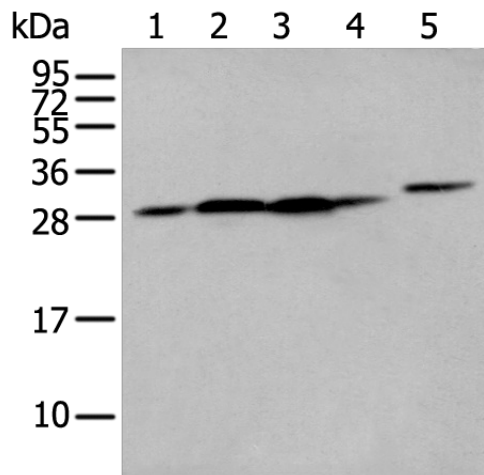
#### Product data:

Product Type:	Primary Antibodies
Applications:	IHC, WB
Recommended Dilution:	WB: 500-2000 WB positive control: Human heart tissue□293T cell□Human fetal liver tissue□A549 and Hepg2 cell IHC: 30-150 Positive control: Human brain Predicted cell location: Cytoplasm
Reactivity:	Human, Mouse
Host:	Rabbit
Isotype:	IgG
Clonality:	Polyclonal
Immunogen:	Fusion protein of human FKBP7
Formulation:	pH7.4 PBS, 0.05% NaN <sub>3</sub> , 40% Glycerol
Purification:	Antigen affinity purification
Conjugation:	Unconjugated
Storage:	Store at -20°C.
Stability:	1 year
Predicted Protein Size:	30 kDa
Gene Name:	FK506 binding protein 7
Database Link:	<a href="#">Entrez Gene 51661 Human Q9Y680</a>
Background:	The protein encoded by this gene belongs to the FKBP-type peptidyl-prolyl cis/trans isomerase (PPIase) family. Members of this family exhibit PPIase activity and function as molecular chaperones. A similar protein in mouse is located in the endoplasmic reticulum and binds calcium.
Synonyms:	FKBP-23; FKBP23; MGC9420; PPIase; rotamase

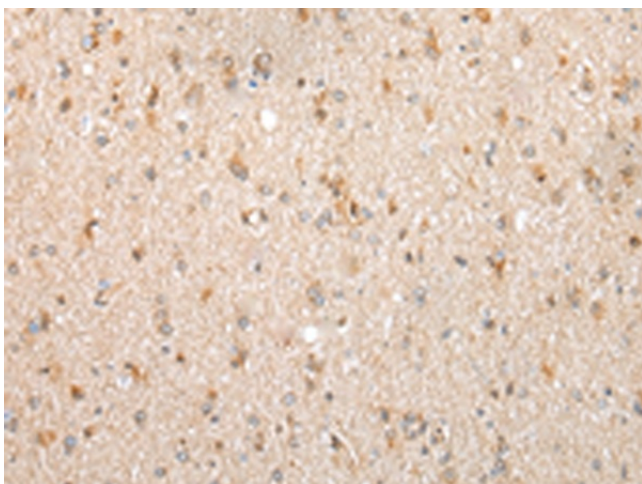


[View online »](#)

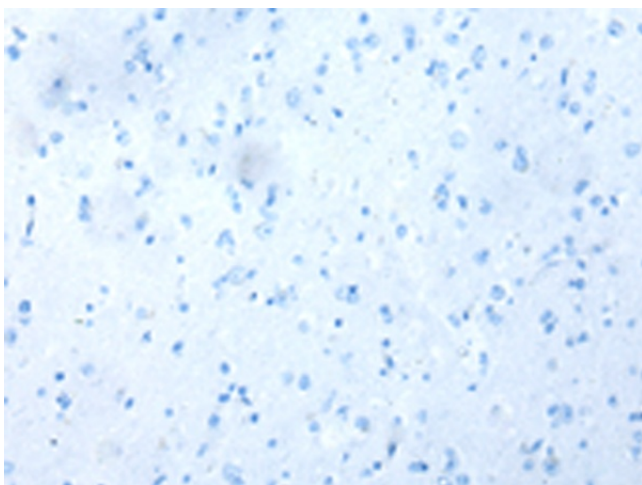
## Product images:



Gel: 12%SDS-PAGE  
Lysate: 40  $\mu$ g  
Lane 1-5: Human heart tissue  
293T cell  
Human fetal liver tissue  
A549 and Hepg2 cell  
Primary antibody: [TA369641] (FKBP7 Antibody)  
at dilution 1/400  
Secondary antibody: Goat anti rabbit IgG at  
1/8000 dilution  
Exposure time: 5 seconds



Immunohistochemistry of paraffin-embedded  
Human brain tissue using [TA369641] (FKBP7  
Antibody) at dilution 1/40 (Original magnification:  
 $\times$ 200)



Immunohistochemistry of paraffin-embedded  
Human brain tissue using [TA369641] (FKBP7  
Antibody) at dilution 1/40, treated with fusion  
protein. (Original magnification:  $\times$ 200)