

Product datasheet for **TA369641**

FKBP7 Rabbit Polyclonal Antibody

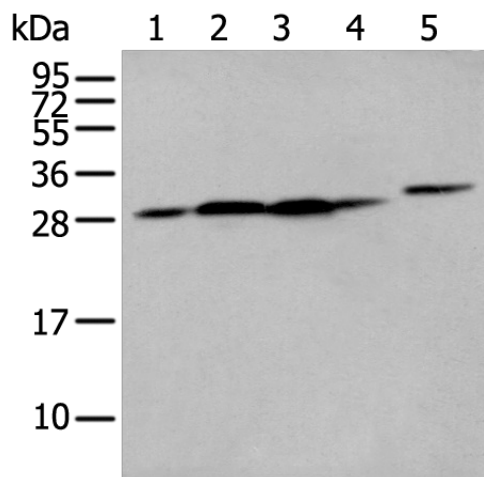
Product data:

Product Type:	Primary Antibodies
Applications:	IHC, WB
Recommended Dilution:	WB: 500-2000 WB positive control: Human heart tissue□293T cell□Human fetal liver tissue□A549 and Hepg2 cell IHC: 30-150 Positive control: Human brain Predicted cell location: Cytoplasm
Reactivity:	Human, Mouse
Host:	Rabbit
Isotype:	IgG
Clonality:	Polyclonal
Immunogen:	Fusion protein of human FKBP7
Formulation:	pH7.4 PBS, 0.05% NaN ₃ , 40% Glycerol
Concentration:	lot specific
Purification:	Antigen affinity purification
Conjugation:	Unconjugated
Storage:	Store at -20°C.
Stability:	1 year
Predicted Protein Size:	30 kDa
Gene Name:	FK506 binding protein 7
Database Link:	Entrez Gene 51661 Human Q9Y680
Background:	The protein encoded by this gene belongs to the FKBP-type peptidyl-prolyl cis/trans isomerase (PPIase) family. Members of this family exhibit PPIase activity and function as molecular chaperones. A similar protein in mouse is located in the endoplasmic reticulum and binds calcium.
Synonyms:	FKBP-23; FKBP23; MGC9420; PPIase; rotamase

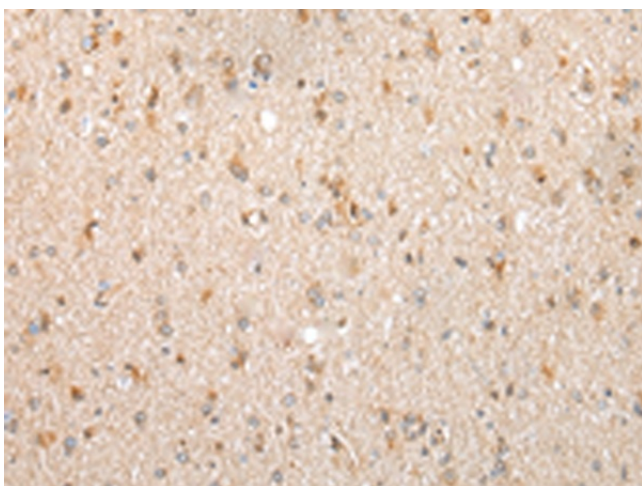


[View online »](#)

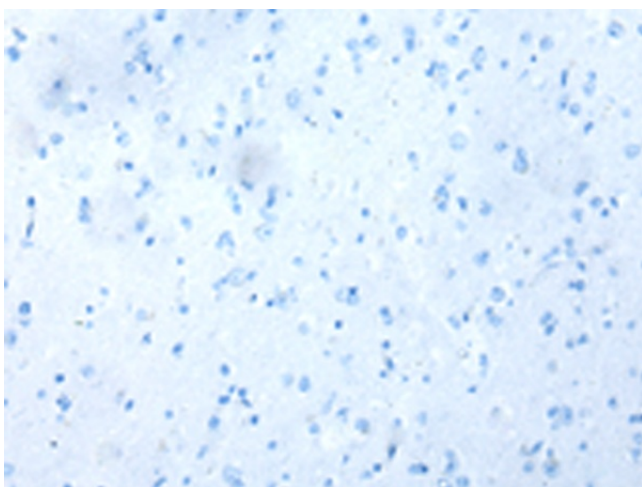
Product images:



Gel: 12%SDS-PAGE
Lysate: 40 μ g
Lane 1-5: Human heart tissue
293T cell
Human fetal liver tissue
A549 and Hepg2 cell
Primary antibody: TA369641 (FKBP7 Antibody) at
dilution 1/400
Secondary antibody: Goat anti rabbit IgG at
1/8000 dilution
Exposure time: 5 seconds



Immunohistochemistry of paraffin-embedded
Human brain tissue using TA369641 (FKBP7
Antibody) at dilution 1/40 (Original magnification:
 $\times 200$)



Immunohistochemistry of paraffin-embedded Human brain tissue using TA369641 (FKBP7 Antibody) at dilution 1/40, treated with fusion protein. (Original magnification: ×200)