

## Product datasheet for **TA369639S**

### TRAPPC4 Rabbit Polyclonal Antibody

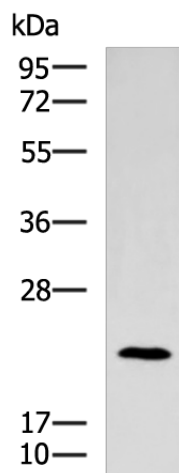
#### Product data:

Product Type:	Primary Antibodies
Applications:	IHC, WB
Recommended Dilution:	WB: 500-2000 WB positive control: Human bladder transitional cell carcinoma cancer next level 2-3 tissue lysate IHC: 100-200 Positive control: Human liver cancer Predicted cell location: Cytoplasm
Reactivity:	Human, Mouse, Rat
Host:	Rabbit
Isotype:	IgG
Clonality:	Polyclonal
Immunogen:	Fusion protein of human TRAPPC4
Formulation:	pH7.4 PBS, 0.05% NaN <sub>3</sub> , 40% Glycerol
Purification:	Antigen affinity purification
Conjugation:	Unconjugated
Storage:	Store at -20°C.
Stability:	1 year
Predicted Protein Size:	24 kDa
Gene Name:	trafficking protein particle complex 4
Database Link:	<a href="#">Entrez Gene 51399 Human Q9Y296</a>
Background:	May play a role in vesicular transport from endoplasmic reticulum to Golgi.
Synonyms:	CGI-104; HSPC172; PTD009; SBDN; SYNBINDIN; TRS23

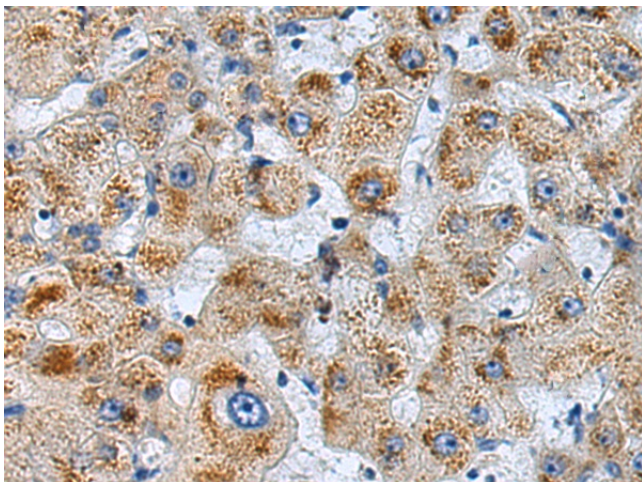


[View online »](#)

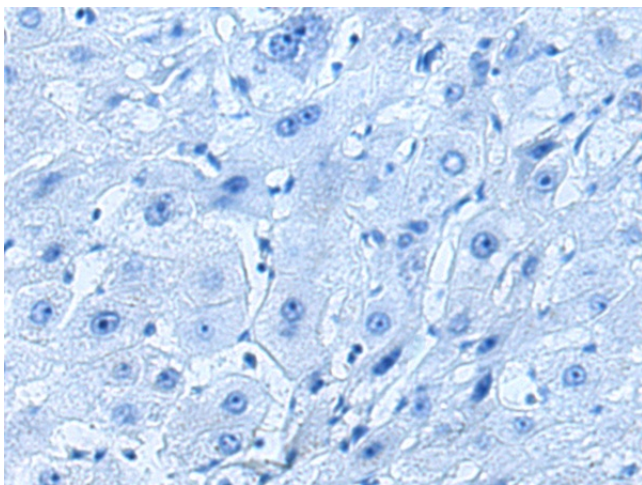
## Product images:



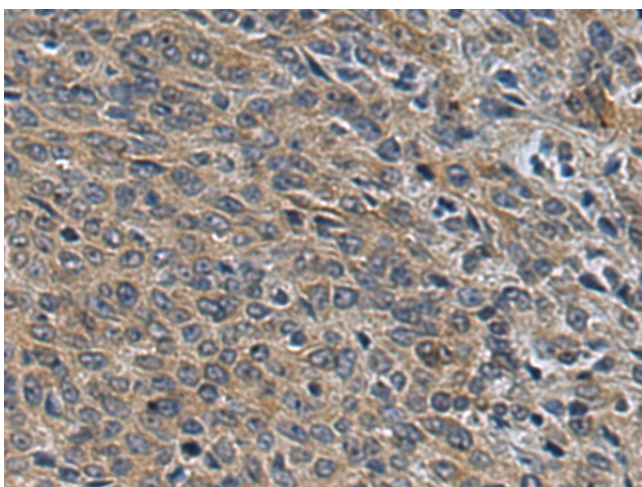
Gel: 12%SDS-PAGE  
Lysate: 40  $\mu$ g  
Lane: Human bladder transitional cell carcinoma cancer next level 2-3 tissue lysate  
Primary antibody: [TA369639] (TRAPPC4 Antibody) at dilution 1/700  
Secondary antibody: Goat anti rabbit IgG at 1/5000 dilution  
Exposure time: 30 seconds



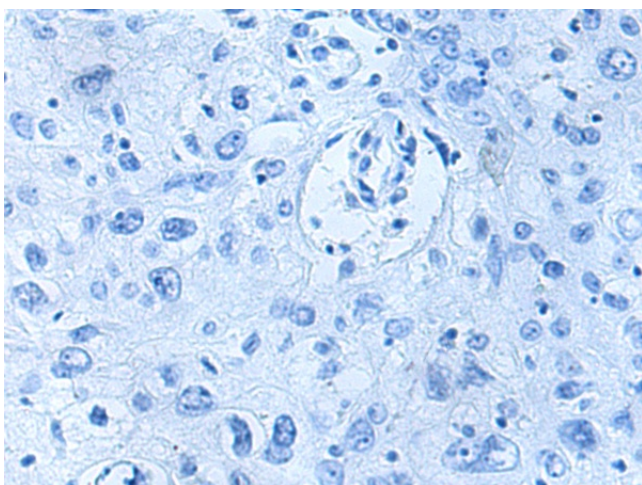
Immunohistochemistry of paraffin-embedded Human liver cancer tissue using [TA369639] (TRAPPC4 Antibody) at dilution 1/90 (Original magnification:  $\times$ 200)



Immunohistochemistry of paraffin-embedded Human liver cancer tissue using [TA369639] (TRAPPC4 Antibody) at dilution 1/90, treated with fusion protein. (Original magnification:  $\times 200$ )



Immunohistochemistry of paraffin-embedded Human cervical cancer tissue using [TA369639] (TRAPPC4 Antibody) at dilution 1/90 (Original magnification:  $\times 200$ )



Immunohistochemistry of paraffin-embedded Human cervical cancer tissue using [TA369639] (TRAPPC4 Antibody) at dilution 1/90, treated with fusion protein. (Original magnification:  $\times 200$ )