

Product datasheet for **TA369636**

NOLA1 (GAR1) Rabbit Polyclonal Antibody

Product data:

Product Type:	Primary Antibodies
Applications:	IHC, WB
Recommended Dilution:	WB: 200-1000 WB positive control: Human left kidney tissue and Human fetal liver tissue lysates IHC: 25-100 Positive control: Human liver cancer Predicted cell location: Nucleus and Cytoplasm
Reactivity:	Human
Host:	Rabbit
Isotype:	IgG
Clonality:	Polyclonal
Immunogen:	Full length fusion protein
Formulation:	pH7.4 PBS, 0.05% NaN ₃ , 40% Glycerol
Concentration:	lot specific
Purification:	Antigen affinity purification
Conjugation:	Unconjugated
Storage:	Store at -20°C.
Stability:	1 year
Predicted Protein Size:	22 kDa
Gene Name:	GAR1 ribonucleoprotein
Database Link:	Entrez Gene 54433 Human Q9NY12



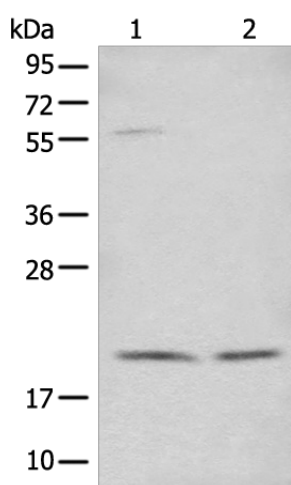
[View online »](#)

Background:

This gene is a member of the H/ACA snoRNPs (small nucleolar ribonucleoproteins) gene family. snoRNPs are involved in various aspects of rRNA processing and modification and have been classified into two families: C/D and H/ACA. The H/ACA snoRNPs also include the DKC1, NOLA2 and NOLA3 proteins. These four H/ACA snoRNP proteins localize to the dense fibrillar components of nucleoli and to coiled (Cajal) bodies in the nucleus. Both 18S rRNA production and rRNA pseudouridylation are impaired if any one of the four proteins is depleted. These four H/ACA snoRNP proteins are also components of the telomerase complex. The encoded protein of this gene contains two glycine- and arginine-rich domains and is related to *Saccharomyces cerevisiae* Gar1p. Two splice variants have been found for this gene.

Synonyms:

NOLA1

Product images:

Gel: 12%SDS-PAGE

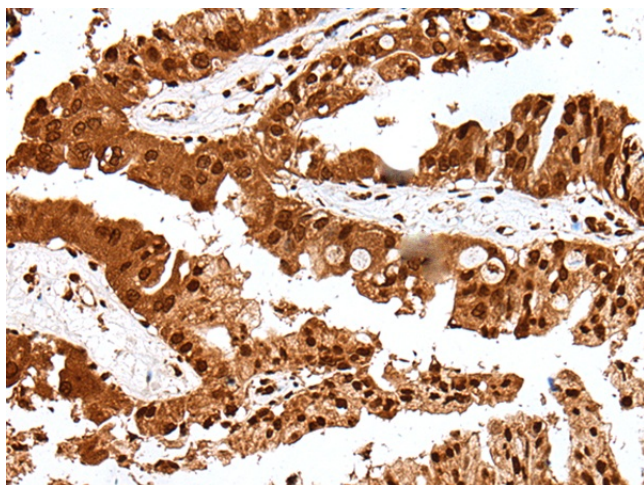
Lysate: 40 µg

Lane 1-2: Human left kidney tissue and Human fetal liver tissue lysates

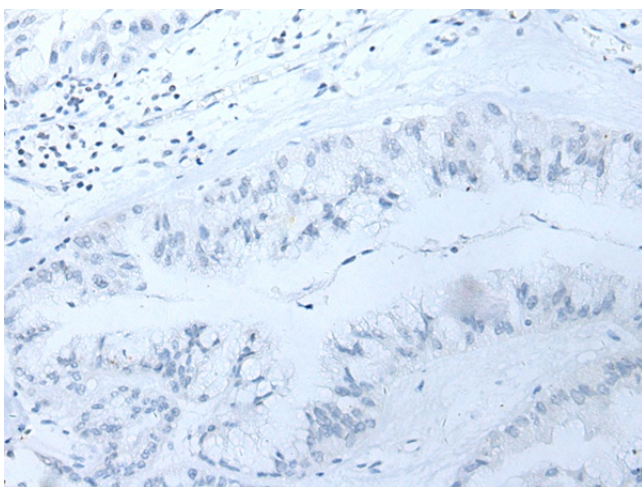
Primary antibody: TA369636 (GAR1 Antibody) at dilution 1/250

Secondary antibody: Goat anti rabbit IgG at 1/8000 dilution

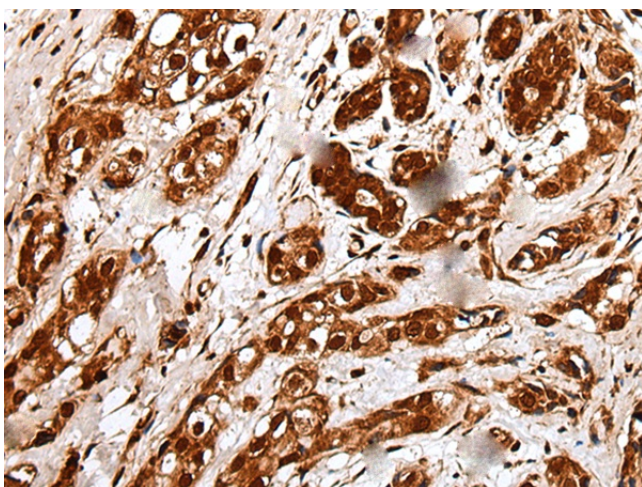
Exposure time: 2 minutes



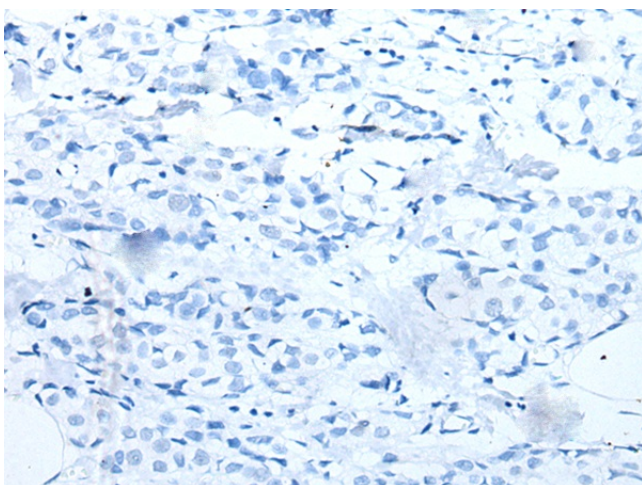
Immunohistochemistry of paraffin-embedded Human liver cancer tissue using TA369636 (GAR1 Antibody) at dilution 1/30 (Original magnification: ×200)



Immunohistochemistry of paraffin-embedded Human liver cancer tissue using TA369636 (GAR1 Antibody) at dilution 1/30, treated with fusion protein. (Original magnification: $\times 200$)



Immunohistochemistry of paraffin-embedded Human breast cancer tissue using TA369636 (GAR1 Antibody) at dilution 1/30 (Original magnification: $\times 200$)



Immunohistochemistry of paraffin-embedded Human breast cancer tissue using TA369636 (GAR1 Antibody) at dilution 1/30, treated with fusion protein. (Original magnification: $\times 200$)