

## Product datasheet for **TA369630**

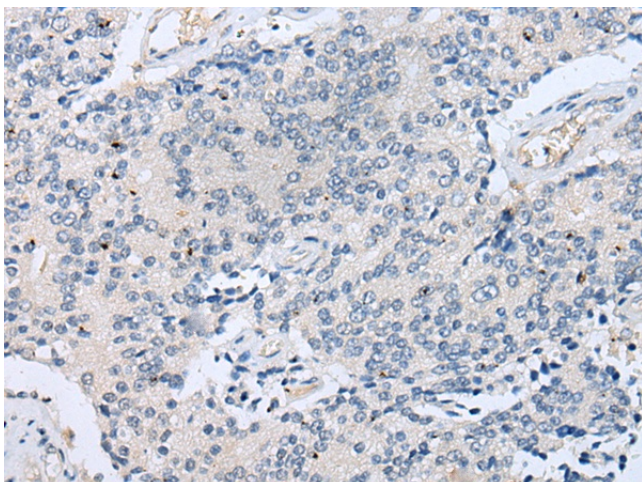
### **LYPD4 Rabbit Polyclonal Antibody**

#### **Product data:**

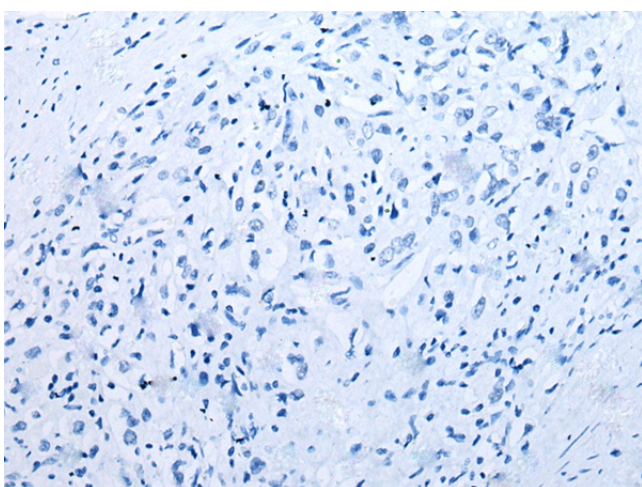
Product Type:	Primary Antibodies
Applications:	IHC
Recommended Dilution:	IHC: 10-50 Positive control: Human prostate cancer Predicted cell location: Cell membrane
Reactivity:	Human
Host:	Rabbit
Isotype:	IgG
Clonality:	Polyclonal
Immunogen:	Full length fusion protein
Formulation:	pH7.4 PBS, 0.05% NaN <sub>3</sub> , 40% Glycerol
Concentration:	lot specific
Purification:	Antigen affinity purification
Conjugation:	Unconjugated
Storage:	Store at -20°C.
Stability:	1 year
Gene Name:	LY6/PLAUR domain containing 4
Database Link:	<a href="#">Entrez Gene 147719 Human</a> <a href="#">Q6UWN0</a>
Background:	The specific function of LYPD4 is not yet known.
Synonyms:	MGC42718; SMR

[View online »](#)

## Product images:



Immunohistochemistry of paraffin-embedded Human prostate cancer tissue using TA369630 (LYPD4 Antibody) at dilution 1/25 (Original magnification: ×200)



Immunohistochemistry of paraffin-embedded Human prostate cancer tissue using TA369630 (LYPD4 Antibody) at dilution 1/25, treated with fusion protein. (Original magnification: ×200)