

## Product datasheet for **TA369627S**

### COMMD10 Rabbit Polyclonal Antibody

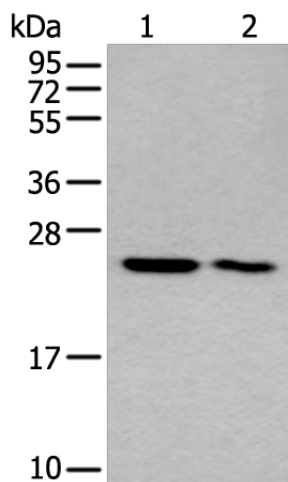
#### Product data:

Product Type:	Primary Antibodies
Applications:	IHC, WB
Recommended Dilution:	WB: 200-1000 WB positive control: Human left kidney tissue and liver cancer tissue lysates IHC: 20-100 Positive control: Human esophagus cancer Predicted cell location: Cytoplasm
Reactivity:	Human, Mouse
Host:	Rabbit
Isotype:	IgG
Clonality:	Polyclonal
Immunogen:	Fusion protein of human COMMD10
Formulation:	pH7.4 PBS, 0.05% NaN <sub>3</sub> , 40% Glycerol
Purification:	Antigen affinity purification
Conjugation:	Unconjugated
Storage:	Store at -20°C.
Stability:	1 year
Predicted Protein Size:	23 kDa
Gene Name:	COMM domain containing 10
Database Link:	<a href="#">Entrez Gene 51397 Human Q9Y6G5</a>
Background:	May modulate activity of cullin-RING E3 ubiquitin ligase (CRL) complexes (PubMed:21778237). May down-regulate activation of NF-kappa-B (PubMed:15799966).
Synonyms:	FLJ11285; PTD002

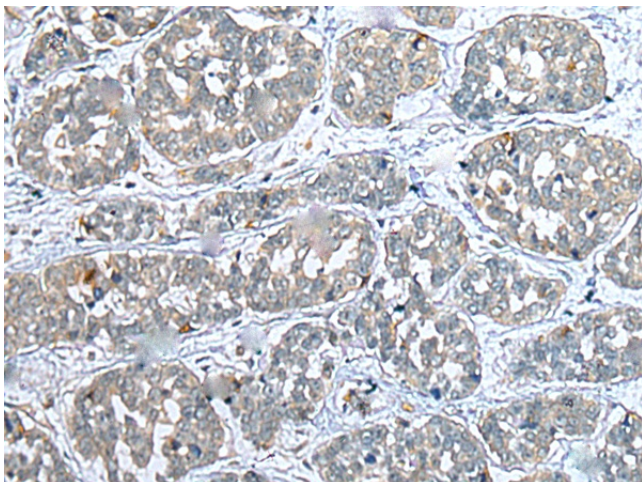


[View online »](#)

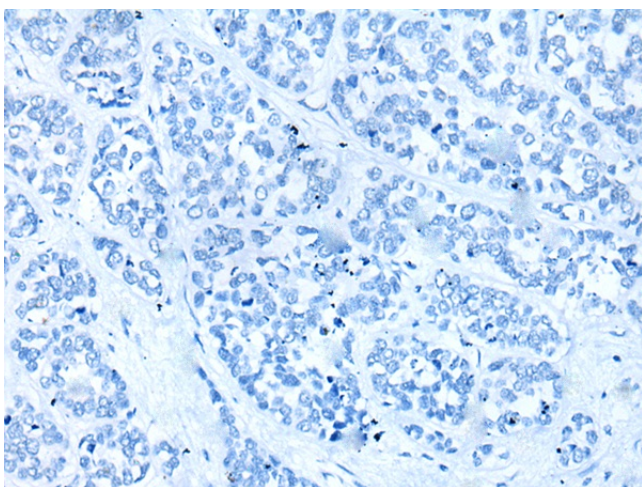
## Product images:



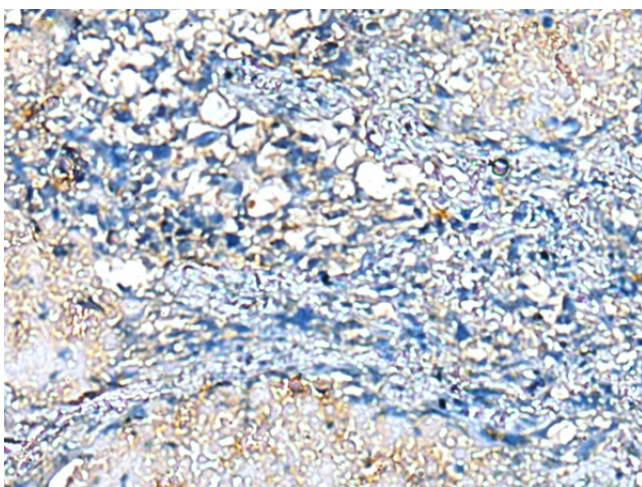
Gel: 12%SDS-PAGE  
 Lysate: 40 µg  
 Lane 1-2: Human left kidney tissue and liver cancer tissue lysates  
 Primary antibody: [TA369627] (COMMD10 Antibody) at dilution 1/200  
 Secondary antibody: Goat anti rabbit IgG at 1/8000 dilution  
 Exposure time: 7 seconds



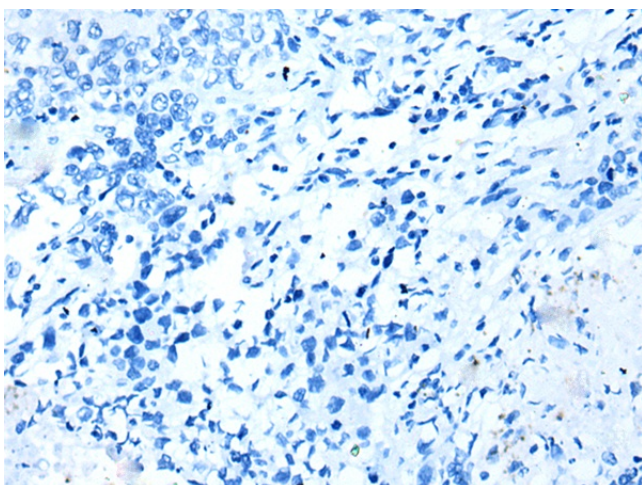
Immunohistochemistry of paraffin-embedded Human esophagus cancer tissue using [TA369627] (COMMD10 Antibody) at dilution 1/25 (Original magnification: ×200)



Immunohistochemistry of paraffin-embedded Human esophagus cancer tissue using [TA369627] (COMMD10 Antibody) at dilution 1/25, treated with fusion protein. (Original magnification: ×200)



Immunohistochemistry of paraffin-embedded Human lung cancer tissue using [TA369627] (COMMD10 Antibody) at dilution 1/25 (Original magnification: ×200)



Immunohistochemistry of paraffin-embedded Human lung cancer tissue using [TA369627] (COMMD10 Antibody) at dilution 1/25, treated with fusion protein. (Original magnification: ×200)