

## Product datasheet for **TA369627**

### COMMD10 Rabbit Polyclonal Antibody

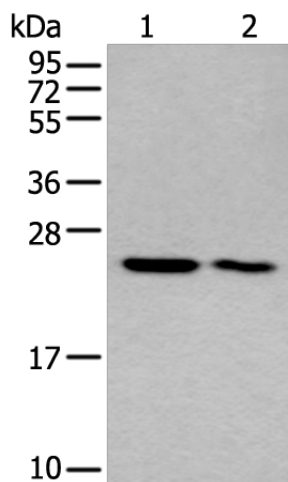
#### Product data:

|                         |  |
|-------------------------|--|
| Product Type:           | Primary Antibodies   |
| Applications:           | IHC, WB  |
| Recommended Dilution:   | WB: 200-1000<br>WB positive control: Human left kidney tissue and liver cancer tissue lysates<br>IHC: 20-100<br>Positive control: Human esophagus cancer<br>Predicted cell location: Cytoplasm |
| Reactivity:             | Human, Mouse   |
| Host:                   | Rabbit   |
| Isotype:                | IgG  |
| Clonality:              | Polyclonal   |
| Immunogen:              | Fusion protein of human COMMD10  |
| Formulation:            | pH7.4 PBS, 0.05% NaN <sub>3</sub> , 40% Glycerol   |
| Concentration:          | lot specific   |
| Purification:           | Antigen affinity purification  |
| Conjugation:            | Unconjugated   |
| Storage:                | Store at -20°C.  |
| Stability:              | 1 year   |
| Predicted Protein Size: | 23 kDa   |
| Gene Name:              | COMM domain containing 10  |
| Database Link:          | <a href="#">Entrez Gene 51397 Human Q9Y6G5</a>   |
| Background:             | May modulate activity of cullin-RING E3 ubiquitin ligase (CRL) complexes (PubMed:21778237).<br>May down-regulate activation of NF-kappa-B (PubMed:15799966).                                   |
| Synonyms:               | FLJ11285; PTD002   |

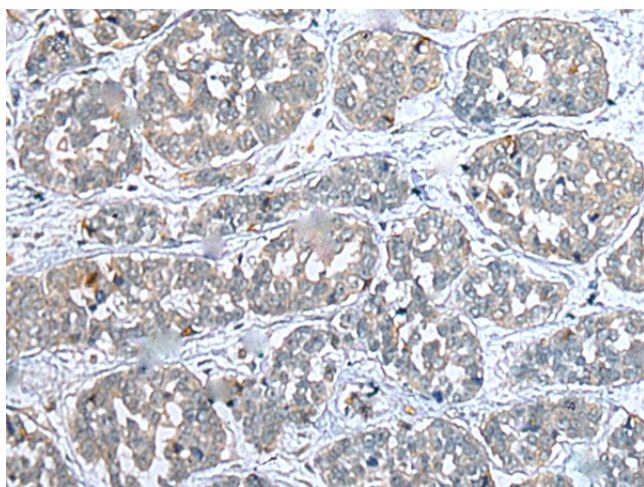


[View online »](#)

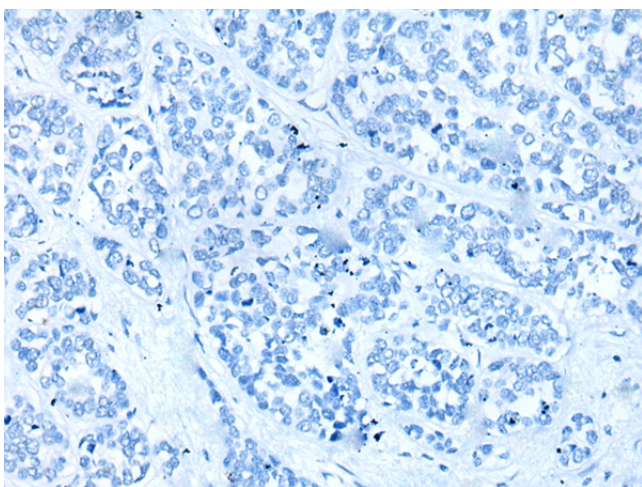
## Product images:



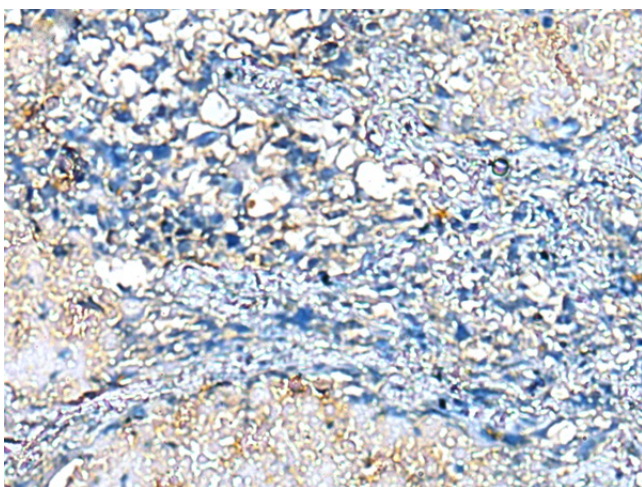
Gel: 12%SDS-PAGE  
Lysate: 40  $\mu$ g  
Lane 1-2: Human left kidney tissue and liver cancer tissue lysates  
Primary antibody: TA369627 (COMMD10 Antibody) at dilution 1/200  
Secondary antibody: Goat anti rabbit IgG at 1/8000 dilution  
Exposure time: 7 seconds



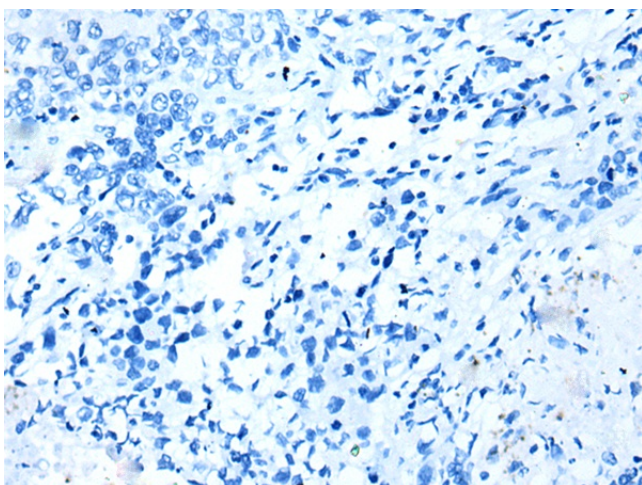
Immunohistochemistry of paraffin-embedded Human esophagus cancer tissue using TA369627 (COMMD10 Antibody) at dilution 1/25 (Original magnification:  $\times 200$ )



Immunohistochemistry of paraffin-embedded Human esophagus cancer tissue using TA369627 (COMMD10 Antibody) at dilution 1/25, treated with fusion protein. (Original magnification: x200)



Immunohistochemistry of paraffin-embedded Human lung cancer tissue using TA369627 (COMMD10 Antibody) at dilution 1/25 (Original magnification: x200)



Immunohistochemistry of paraffin-embedded Human lung cancer tissue using TA369627 (COMMD10 Antibody) at dilution 1/25, treated with fusion protein. (Original magnification: x200)