

Product datasheet for **TA369623S**

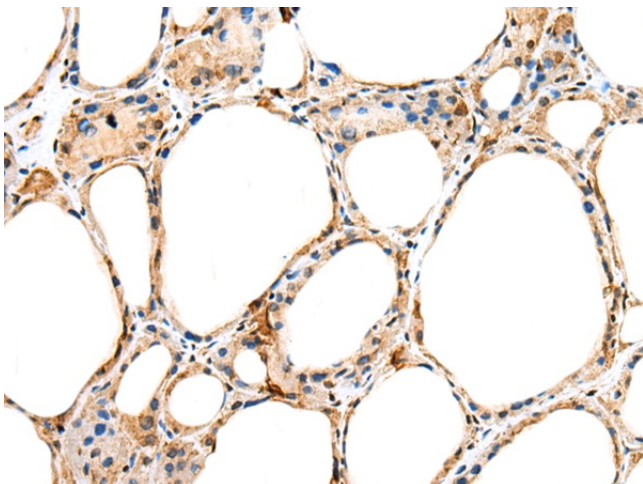
PLA2G12A Rabbit Polyclonal Antibody

Product data:

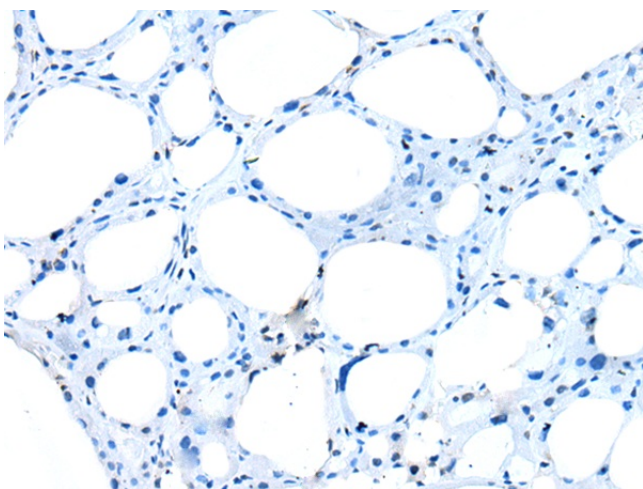
Product Type:	Primary Antibodies
Applications:	IHC
Recommended Dilution:	IHC: 20-100 Positive control: Human thyroid cancer Predicted cell location: Cytoplasm
Reactivity:	Human, Mouse
Host:	Rabbit
Isotype:	IgG
Clonality:	Polyclonal
Immunogen:	Fusion protein of human PLA2G12A
Formulation:	pH7.4 PBS, 0.05% NaN ₃ , 40% Glycerol
Purification:	Antigen affinity purification
Conjugation:	Unconjugated
Storage:	Store at -20°C.
Stability:	1 year
Gene Name:	phospholipase A2 group XIIA
Database Link:	Entrez Gene 81579 Human Q9BZM1
Background:	Secreted phospholipase A2 (sPLA2) enzymes liberate arachidonic acid from phospholipids for production of eicosanoids and exert a variety of physiologic and pathologic effects. Group XII sPLA2s, such as PLA2G12A, have relatively low specific activity and are structurally and functionally distinct from other sPLA2s (Gelb et al., 2000 [PubMed 11031251]).
Synonyms:	GXII; PLA2G12; ROSSY; sPLA2-XII



[View online »](#)

Product images:

Immunohistochemistry of paraffin-embedded Human thyroid cancer tissue using [TA369623] (PLA2G12A Antibody) at dilution 1/25 (Original magnification: $\times 200$)



Immunohistochemistry of paraffin-embedded Human thyroid cancer tissue using [TA369623] (PLA2G12A Antibody) at dilution 1/25, treated with fusion protein. (Original magnification: $\times 200$)