

## Product datasheet for **TA369620**

### DYDC2 Rabbit Polyclonal Antibody

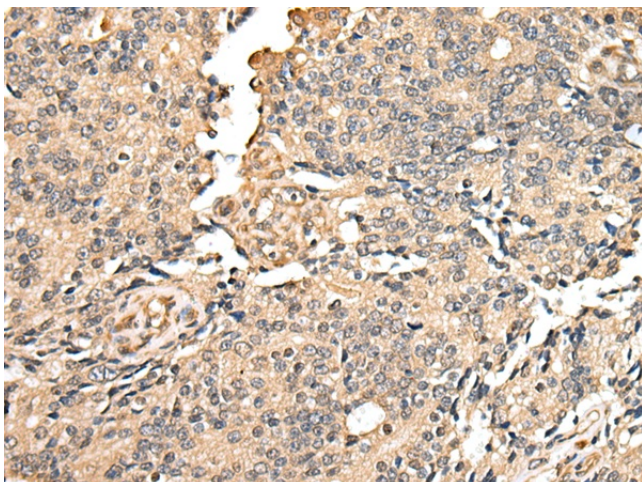
#### Product data:

Product Type:	Primary Antibodies
Applications:	IHC
Recommended Dilution:	IHC: 25-100 Positive control: Human prostate cancer Predicted cell location: Cytoplasm and Cell membrane
Reactivity:	Human
Host:	Rabbit
Isotype:	IgG
Clonality:	Polyclonal
Immunogen:	Full length fusion protein
Formulation:	pH7.4 PBS, 0.05% NaN <sub>3</sub> , 40% Glycerol
Concentration:	lot specific
Purification:	Antigen affinity purification
Conjugation:	Unconjugated
Storage:	Store at -20°C.
Stability:	1 year
Gene Name:	DPY30 domain containing 2
Database Link:	<a href="#">Entrez Gene 84332 Human Q96IM9</a>
Background:	This gene encodes a member of a family of proteins that contains a DPY30 domain. This gene locus overlaps with a closely related gene on the opposite strand. Alternative splicing results in multiple transcript variants.
Synonyms:	bA36D19.6; MGC16186; OTTHUMP00000019966; OTTHUMP00000019967

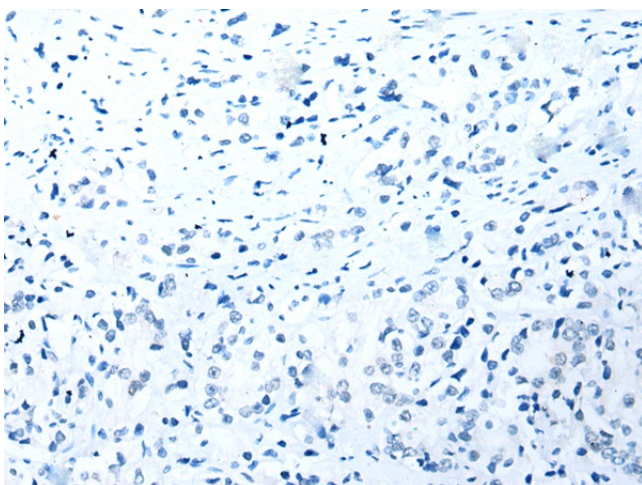


[View online »](#)

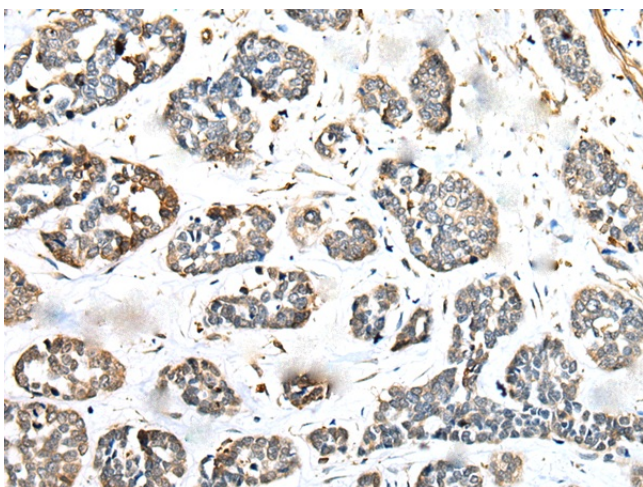
## Product images:



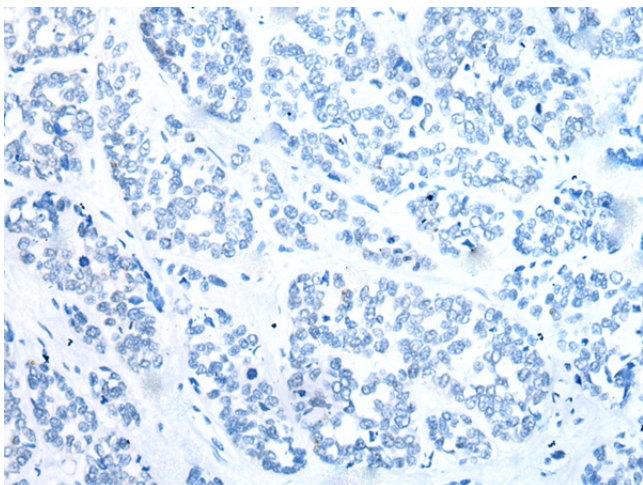
Immunohistochemistry of paraffin-embedded Human prostate cancer tissue using TA369620 (DYDC2 Antibody) at dilution 1/25 (Original magnification:  $\times 200$ )



Immunohistochemistry of paraffin-embedded Human prostate cancer tissue using TA369620 (DYDC2 Antibody) at dilution 1/25, treated with fusion protein. (Original magnification:  $\times 200$ )



Immunohistochemistry of paraffin-embedded Human esophagus cancer tissue using TA369620 (DYDC2 Antibody) at dilution 1/25 (Original magnification: ×200)



Immunohistochemistry of paraffin-embedded Human esophagus cancer tissue using TA369620 (DYDC2 Antibody) at dilution 1/25, treated with fusion protein. (Original magnification: ×200)