

## Product datasheet for **TA369619S**

### EEF1E1 Rabbit Polyclonal Antibody

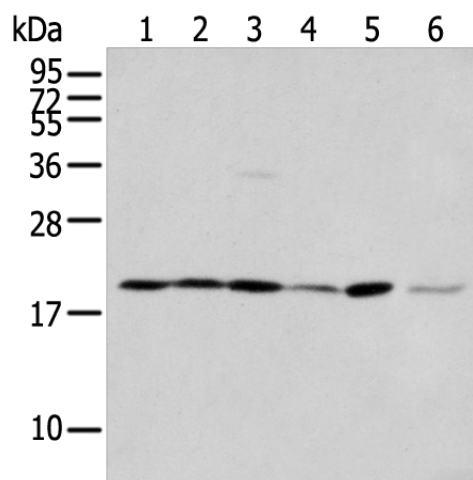
#### Product data:

Product Type:	Primary Antibodies
Applications:	IHC, WB
Recommended Dilution:	WB: 500-2000 WB positive control: A549 cell□Jurkat cell□Human testis tissue□293T cell□Hepg2 cell and A431 cell IHC: 25-100 Positive control: Human esophagus cancer Predicted cell location: Cytoplasm or Nucleus
Reactivity:	Human, Mouse
Host:	Rabbit
Isotype:	IgG
Clonality:	Polyclonal
Immunogen:	Full length fusion protein
Formulation:	pH7.4 PBS, 0.05% NaN <sub>3</sub> , 40% Glycerol
Purification:	Antigen affinity purification
Conjugation:	Unconjugated
Storage:	Store at -20°C.
Stability:	1 year
Predicted Protein Size:	20 kDa
Gene Name:	eukaryotic translation elongation factor 1 epsilon 1
Database Link:	<a href="#">Entrez Gene 9521 Human O43324</a>
Background:	This gene encodes a multifunctional protein that localizes to both the cytoplasm and nucleus. In the cytoplasm, the encoded protein is an auxiliary component of the macromolecular aminoacyl-tRNA synthase complex. However, its mouse homolog has been shown to translocate to the nucleus in response to DNA damage, and it plays a positive role in ATM/ATR-mediated p53 activation. Alternative splicing results in multiple transcript variants.
Synonyms:	AIMP3; P18

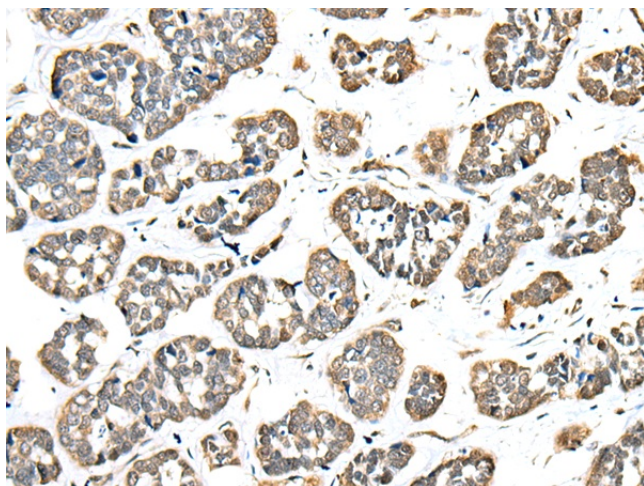


[View online »](#)

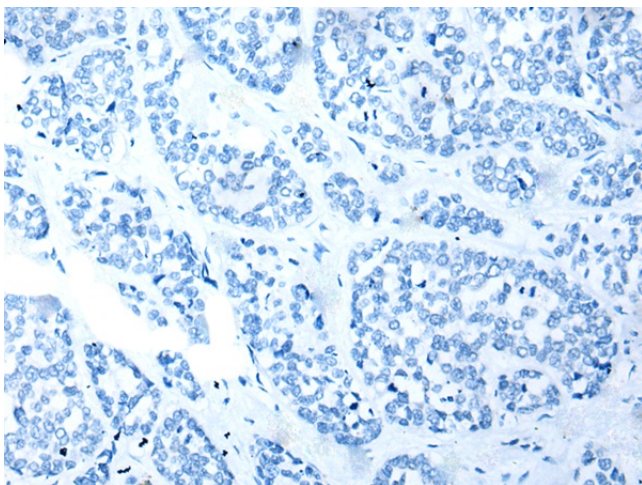
## Product images:



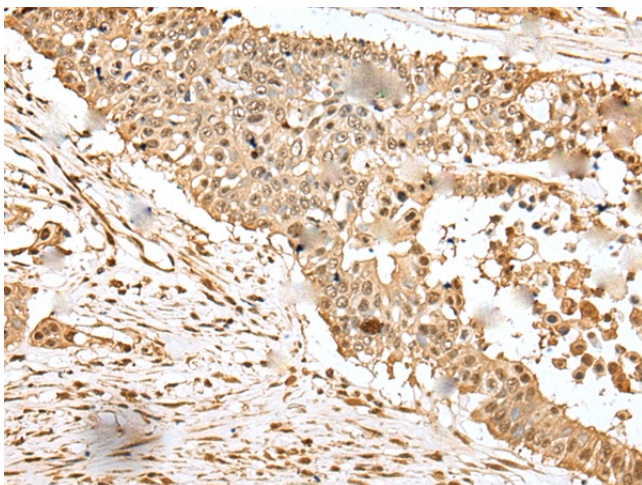
Gel: 12%SDS-PAGE  
Lysate: 40  $\mu$ g  
Lane 1-6: A549 cell  
Jurkat cell  
Human testis tissue  
293T cell  
Hepg2 cell and A431 cell  
Primary antibody: [TA369619] (EEF1E1 Antibody)  
at dilution 1/400  
Secondary antibody: Goat anti rabbit IgG at  
1/8000 dilution  
Exposure time: 2 seconds



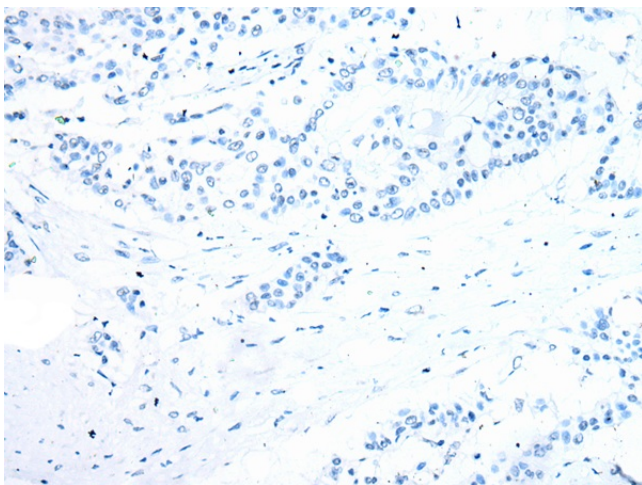
Immunohistochemistry of paraffin-embedded  
Human esophagus cancer tissue using  
[TA369619] (EEF1E1 Antibody) at dilution 1/35  
(Original magnification:  $\times$ 200)



Immunohistochemistry of paraffin-embedded Human esophagus cancer tissue using [TA369619] (EEF1E1 Antibody) at dilution 1/35, treated with fusion protein. (Original magnification:  $\times 200$ )



Immunohistochemistry of paraffin-embedded Human colorectal cancer tissue using [TA369619] (EEF1E1 Antibody) at dilution 1/35 (Original magnification:  $\times 200$ )



Immunohistochemistry of paraffin-embedded Human colorectal cancer tissue using [TA369619] (EEF1E1 Antibody) at dilution 1/35, treated with fusion protein. (Original magnification:  $\times 200$ )