

Product datasheet for **TA369619**

EEF1E1 Rabbit Polyclonal Antibody

Product data:

Product Type:	Primary Antibodies
Applications:	IHC, WB
Recommended Dilution:	WB: 500-2000 WB positive control: A549 cell□Jurkat cell□Human testis tissue□293T cell□Hepg2 cell and A431 cell IHC: 25-100 Positive control: Human esophagus cancer Predicted cell location: Cytoplasm or Nucleus
Reactivity:	Human, Mouse
Host:	Rabbit
Isotype:	IgG
Clonality:	Polyclonal
Immunogen:	Full length fusion protein
Formulation:	pH7.4 PBS, 0.05% NaN ₃ , 40% Glycerol
Concentration:	lot specific
Purification:	Antigen affinity purification
Conjugation:	Unconjugated
Storage:	Store at -20°C.
Stability:	1 year
Predicted Protein Size:	20 kDa
Gene Name:	eukaryotic translation elongation factor 1 epsilon 1
Database Link:	Entrez Gene 9521 Human O43324

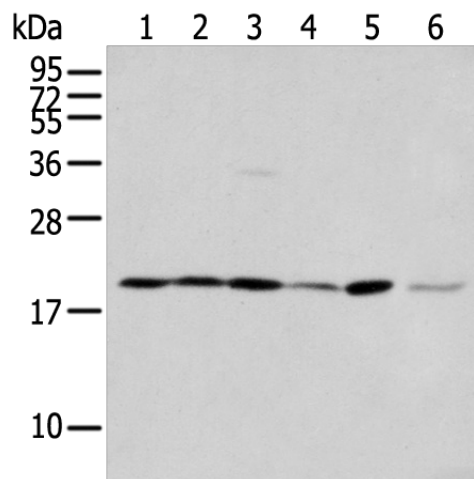
Background: This gene encodes a multifunctional protein that localizes to both the cytoplasm and nucleus. In the cytoplasm, the encoded protein is an auxiliary component of the macromolecular aminoacyl-tRNA synthase complex. However, its mouse homolog has been shown to translocate to the nucleus in response to DNA damage, and it plays a positive role in ATM/ATR-mediated p53 activation. Alternative splicing results in multiple transcript variants.



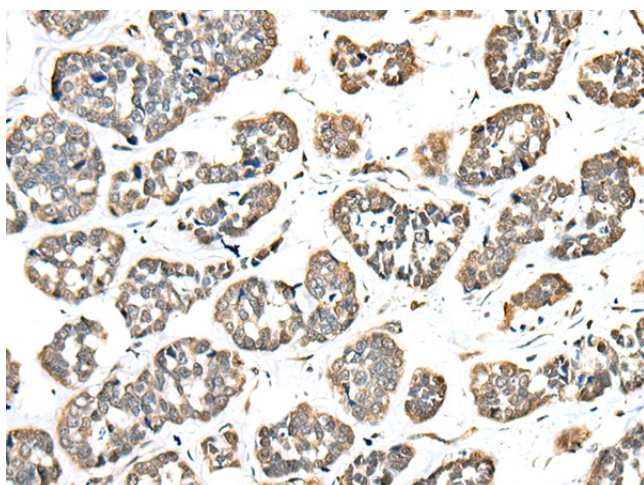
[View online »](#)

Synonyms: AIMP3; P18

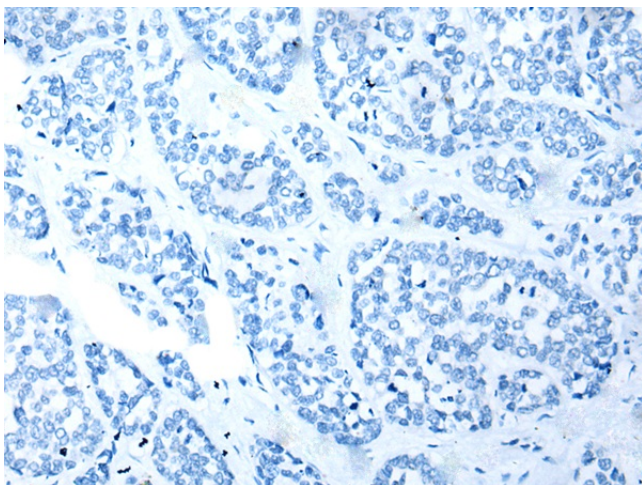
Product images:



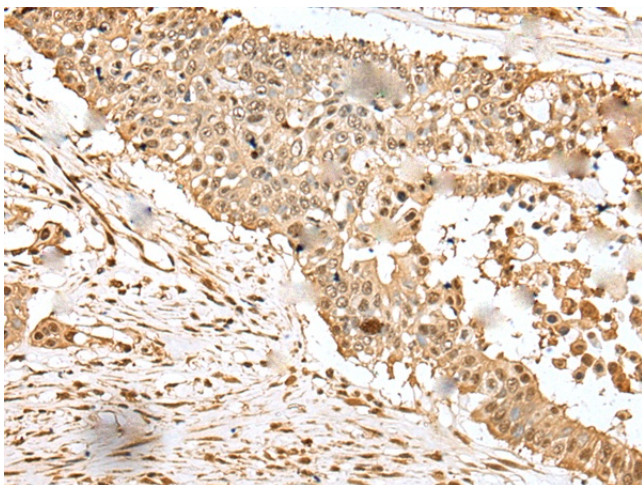
Gel: 12%SDS-PAGE
 Lysate: 40 µg
 Lane 1-6: A549 cell
 Jurkat cell
 Human testis tissue
 293T cell
 Hepg2 cell and A431 cell
 Primary antibody: TA369619 (EEF1E1 Antibody) at dilution 1/400
 Secondary antibody: Goat anti rabbit IgG at 1/8000 dilution
 Exposure time: 2 seconds



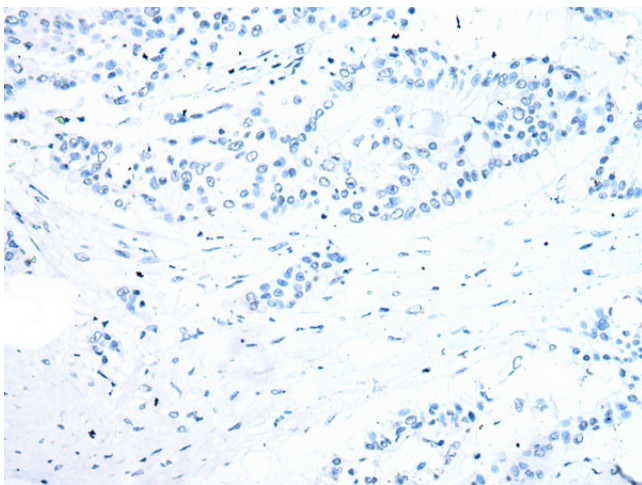
Immunohistochemistry of paraffin-embedded Human esophagus cancer tissue using TA369619 (EEF1E1 Antibody) at dilution 1/35 (Original magnification: ×200)



Immunohistochemistry of paraffin-embedded Human esophagus cancer tissue using TA369619 (EEF1E1 Antibody) at dilution 1/35, treated with fusion protein. (Original magnification: $\times 200$)



Immunohistochemistry of paraffin-embedded Human colorectal cancer tissue using TA369619 (EEF1E1 Antibody) at dilution 1/35 (Original magnification: $\times 200$)



Immunohistochemistry of paraffin-embedded Human colorectal cancer tissue using TA369619 (EEF1E1 Antibody) at dilution 1/35, treated with fusion protein. (Original magnification: $\times 200$)