

## Product datasheet for **TA369611**

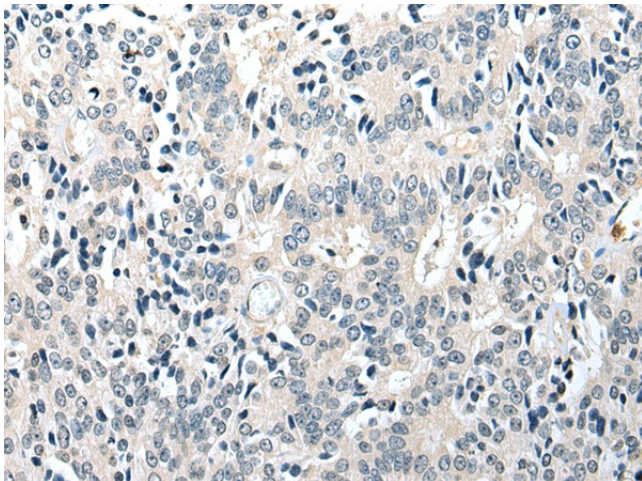
### GMF beta (GMFB) Rabbit Polyclonal Antibody

#### Product data:

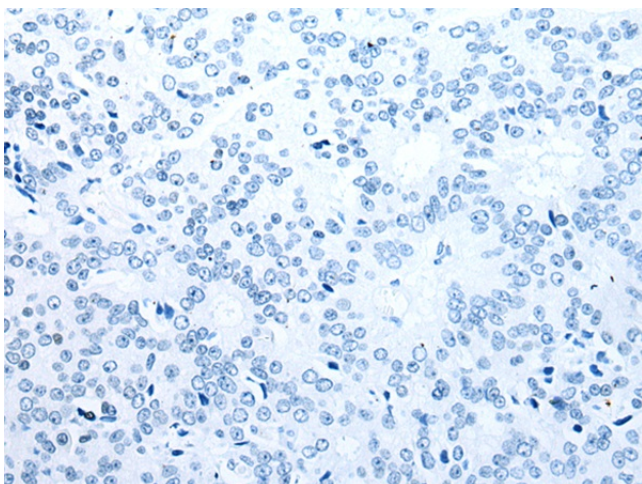
Product Type:	Primary Antibodies
Applications:	IHC
Recommended Dilution:	IHC: 25-100 Positive control: Human prostate cancer Predicted cell location: Cytoplasm
Reactivity:	Human, Mouse, Rat
Host:	Rabbit
Isotype:	IgG
Clonality:	Polyclonal
Immunogen:	Fusion protein of human GMFB
Formulation:	pH7.4 PBS, 0.05% NaN3, 40% Glycerol
Concentration:	lot specific
Purification:	Antigen affinity purification
Conjugation:	Unconjugated
Storage:	Store at -20°C.
Stability:	1 year
Gene Name:	glia maturation factor beta
Database Link:	<a href="#">Entrez Gene 2764 Human P60983</a>
Background:	This protein, which is phosphorylated following phorbol ester stimulation, is important for the nervous system. It causes brain cell differentiation, stimulates neural regeneration and inhibits tumor cell proliferation. Overexpression of GMF in astrocytes has been shown to enhance brain-derived neurotrophic factor (BDNF) production. GMF expression is increased by exercise, and the protein is crucial for exercise-induction of BDNF. Through BDNF production, GMF appears to play a role in neuroprotection. In thymoma, T-cell development is maintained by GMF- $\beta$ being produced by the tumor cells.
Synonyms:	GMF; GMF-beta



[View online »](#)

**Product images:**

Immunohistochemistry of paraffin-embedded Human prostate cancer tissue using TA369611 (GMFB Antibody) at dilution 1/25 (Original magnification: x200)



Immunohistochemistry of paraffin-embedded Human prostate cancer tissue using TA369611 (GMFB Antibody) at dilution 1/25, treated with fusion protein. (Original magnification: x200)