

Product datasheet for **TA369609**

USE1 Rabbit Polyclonal Antibody

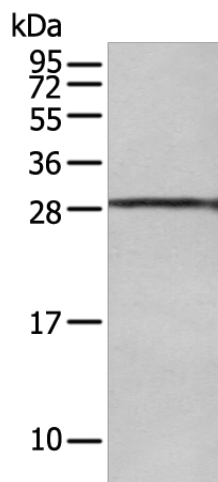
Product data:

Product Type:	Primary Antibodies
Applications:	IHC, WB
Recommended Dilution:	WB: 200-1000 WB positive control: 293T cell IHC: 25-100 Positive control: Human brain Predicted cell location: Cytoplasm
Reactivity:	Human, Mouse
Host:	Rabbit
Isotype:	IgG
Clonality:	Polyclonal
Immunogen:	Full length fusion protein
Formulation:	pH7.4 PBS, 0.05% NaN ₃ , 40% Glycerol
Concentration:	lot specific
Purification:	Antigen affinity purification
Conjugation:	Unconjugated
Storage:	Store at -20°C.
Stability:	1 year
Predicted Protein Size:	29 kDa
Gene Name:	unconventional SNARE in the ER 1
Database Link:	Entrez Gene 55850 Human Q9NZ43
Background:	SNARE that may be involved in targeting and fusion of Golgi-derived retrograde transport vesicles with the ER.
Synonyms:	MDS032; p31; Q-SNARE; SLT1; USE1L



[View online »](#)

Product images:



Gel: 12%SDS-PAGE

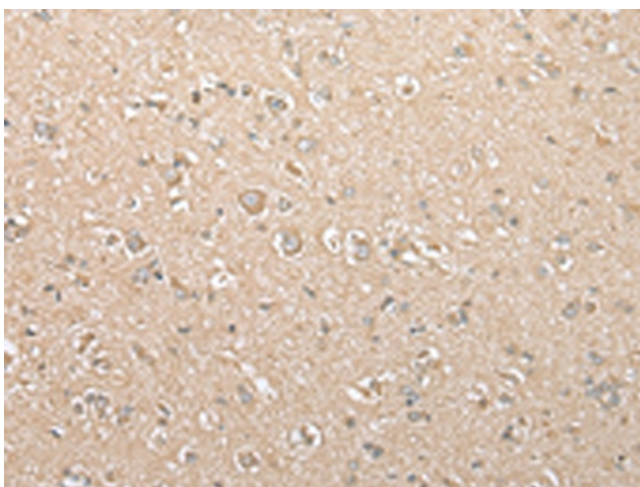
Lysate: 40 μ g

Lane: 293T cell

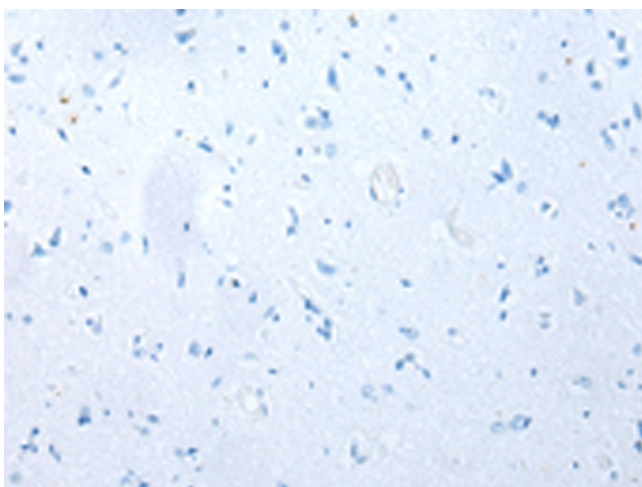
Primary antibody: TA369609 (USE1 Antibody) at dilution 1/250

Secondary antibody: Goat anti rabbit IgG at 1/8000 dilution

Exposure time: 10 seconds



Immunohistochemistry of paraffin-embedded Human brain tissue using TA369609 (USE1 Antibody) at dilution 1/25 (Original magnification: \times 200)



Immunohistochemistry of paraffin-embedded Human brain tissue using TA369609 (USE1 Antibody) at dilution 1/25, treated with fusion protein. (Original magnification: x200)