

## Product datasheet for **TA369605S**

### CTRP3 (C1QTNF3) Rabbit Polyclonal Antibody

#### Product data:

Product Type:	Primary Antibodies
Applications:	IHC, WB
Recommended Dilution:	WB: 200-1000 WB positive control: Human colorectal cancer tissue IHC: 25-100 Positive control: Human liver cancer Predicted cell location: Secreted
Reactivity:	Human, Mouse
Host:	Rabbit
Isotype:	IgG
Clonality:	Polyclonal
Immunogen:	Fusion protein of human C1QTNF3
Formulation:	pH7.4 PBS, 0.05% NaN <sub>3</sub> , 40% Glycerol
Purification:	Antigen affinity purification
Conjugation:	Unconjugated
Storage:	Store at -20°C.
Stability:	1 year
Predicted Protein Size:	27 kDa
Gene Name:	C1q and tumor necrosis factor related protein 3
Database Link:	<a href="#">Entrez Gene 114899 Human Q9BXJ4</a>



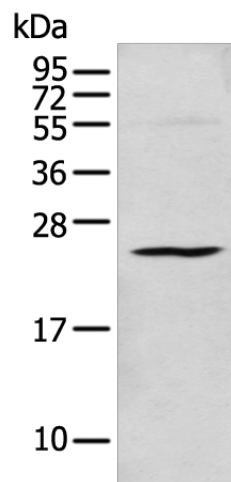
[View online »](#)

**Background:**

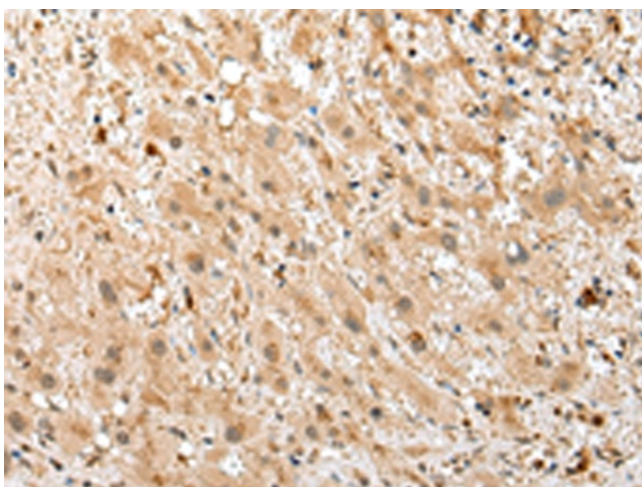
C1qTNF3 (Complement C1q TNF-related protein 3/CTRP3; also CORS26 and cartonectin) is a 30-32 kDa, secreted member of the C1q and TNF-related protein (CTRP) superfamily of molecules. It is expressed by a wide variety of cells, including smooth muscle cells, fibroblasts, adipocytes, monocytes and proliferating chondrocytes. C1qTNF3 is an anti-inflammatory agent that apparently blocks LPS activation of mononuclear cells. It also has marked proliferative activity on diverse cell types such as vascular smooth muscle, chondrocytes, and endothelium. Finally, C1qTNF3 is known to act on hepatocytes and suppress hepatocyte gluconeogenesis. Mature human C1qTNF3 is 224 amino acids (aa) in length (aa 23-246). It possesses an N-terminal collagen-like domain (aa 51-113) followed by a C-terminal globular region (aa 113-246). C1qTNF3 is monomeric when intracellular, but forms a 90 kDa homotrimer plus higher-order oligomer when secreted. There are at least two potential isoform variants. One is 40-42 kDa, glycosylated, and contains a 73 aa insertion after Glu28, while a second shows concurrent deletions of aa 46-69 and 82-105. The longer 40 kDa isoform is reported to form heterotrimers and oligomers with the standard 30 kDa isoform. This has the effect of protecting the standard isoform from proteolysis. Over aa 24-246, human C1qTNF3 shares 99% aa sequence identity with mouse C1qTNF3.

**Synonyms:**

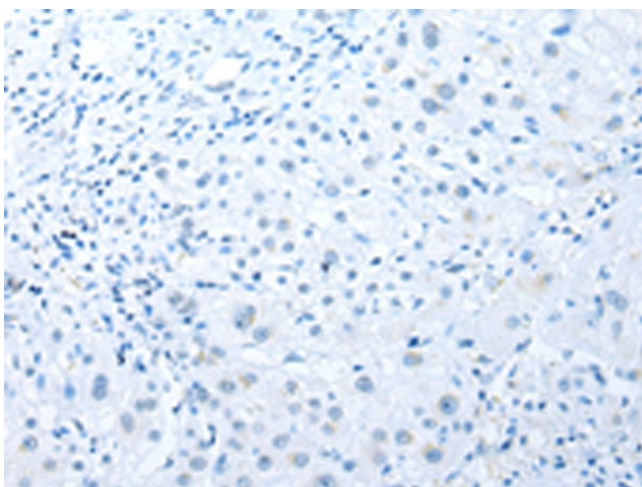
2310005P21Rik; C1ATNF3; cartonectin; Corcs; Cors; Cors-26; CORS26; CTRP3; FLJ37576

**Product images:**

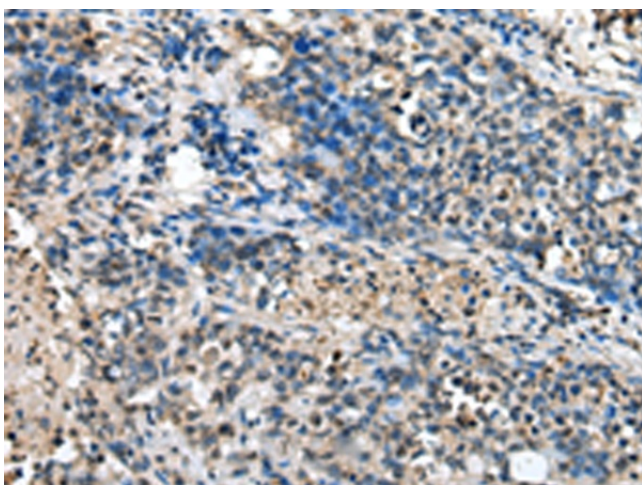
Gel: 12%SDS-PAGE  
Lysate: 40 µg  
Lane: Human colorectal cancer tissue  
Primary antibody: [TA369605] (C1QTNF3 Antibody) at dilution 1/200  
Secondary antibody: Goat anti rabbit IgG at 1/8000 dilution  
Exposure time: 1 minute



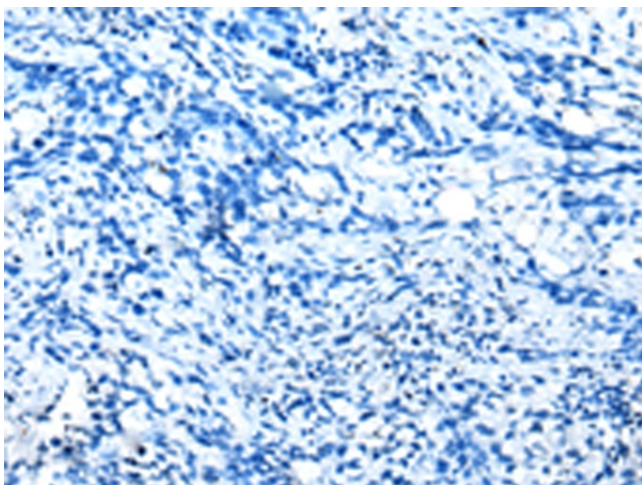
Immunohistochemistry of paraffin-embedded Human liver cancer tissue using [TA369605] (C1QTNF3 Antibody) at dilution 1/25 (Original magnification: ×200)



Immunohistochemistry of paraffin-embedded Human liver cancer tissue using [TA369605] (C1QTNF3 Antibody) at dilution 1/25, treated with fusion protein. (Original magnification: ×200)



Immunohistochemistry of paraffin-embedded Human lung cancer tissue using [TA369605] (C1QTNF3 Antibody) at dilution 1/25 (Original magnification: ×200)



Immunohistochemistry of paraffin-embedded Human lung cancer tissue using [TA369605] (C1QTNF3 Antibody) at dilution 1/25, treated with fusion protein. (Original magnification: ×200)