

## Product datasheet for **TA369592S**

### NUDT2 Rabbit Polyclonal Antibody

#### Product data:

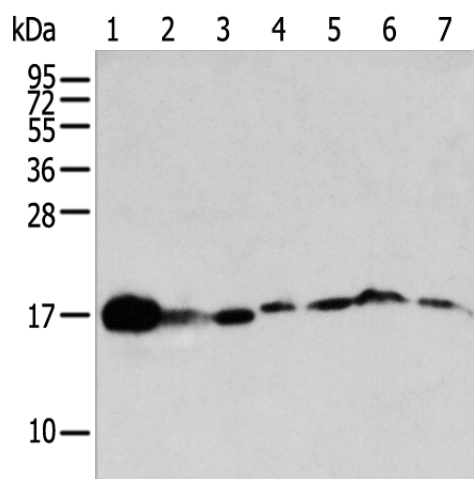
Product Type:	Primary Antibodies
Applications:	IHC, WB
Recommended Dilution:	WB: 200-1000 WB positive control: Mouse kidney , spleen and liver tissue, Jurkat cell, Hepg2 cell, 293T cell, Human placenta tissue IHC: 20-100 Positive control: Human liver cancer Predicted cell location: Cytoplasm
Reactivity:	Human, Mouse, Rat
Host:	Rabbit
Isotype:	IgG
Clonality:	Polyclonal
Immunogen:	Full length fusion protein
Formulation:	pH7.4 PBS, 0.05% NaN <sub>3</sub> , 40% Glycerol
Purification:	Antigen affinity purification
Conjugation:	Unconjugated
Storage:	Store at -20°C.
Stability:	1 year
Predicted Protein Size:	17 kDa
Gene Name:	nudix hydrolase 2
Database Link:	<a href="#">Entrez Gene 318 Human P50583</a>
Background:	This gene encodes a member of the MutT family of nucleotide pyrophosphatases, a subset of the larger NUDIX hydrolase family. The gene product possesses a modification of the MutT sequence motif found in certain nucleotide pyrophosphatases. The enzyme asymmetrically hydrolyzes Ap <sub>4</sub> A to yield AMP and ATP and is responsible for maintaining the intracellular level of the dinucleotide Ap <sub>4</sub> A, the function of which has yet to be established. This gene may be a candidate tumor suppressor gene.



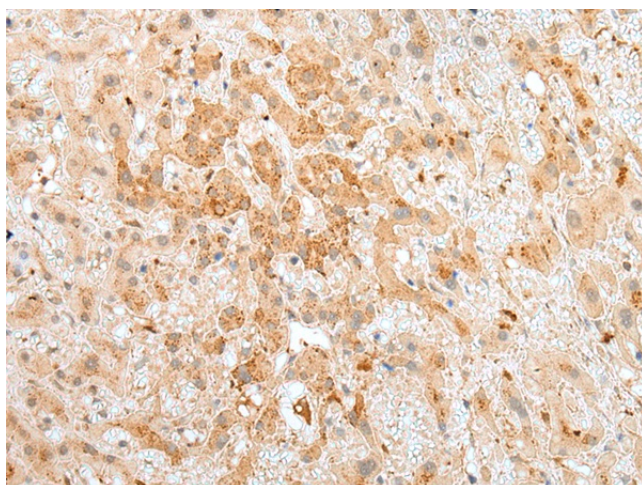
[View online »](#)

Synonyms: Ap4Aase; APAH1; MGC10404; OTTHUMP00000021256; OTTHUMP00000021259

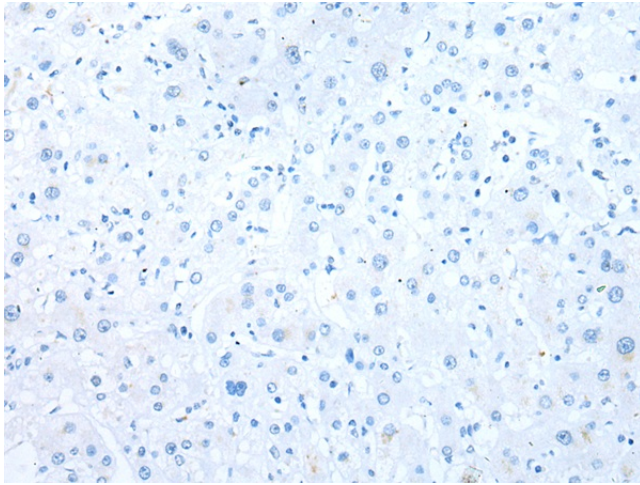
**Product images:**



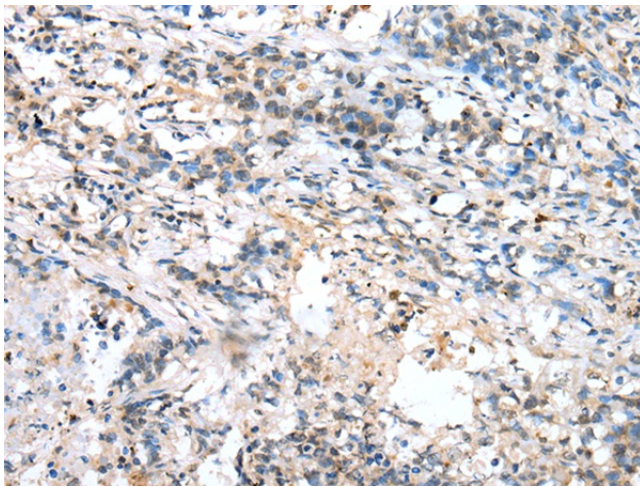
Gel: 12%SDS-PAGE  
 Lysate: 40 µg  
 Lane 1-7: Mouse kidney  
 spleen and liver tissue  
 Jurkat cell  
 Hepg2 cell  
 293T cell  
 Human placenta tissue  
 Primary antibody: [TA369592] (NUDT2 Antibody)  
 at dilution 1/250  
 Secondary antibody: Goat anti rabbit IgG at  
 1/8000 dilution  
 Exposure time: 40 seconds



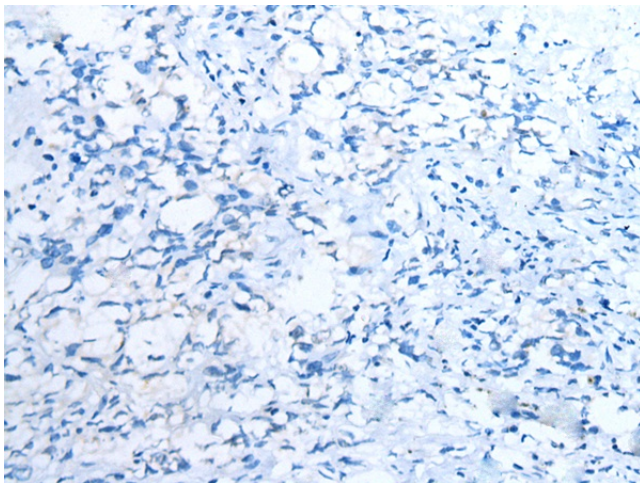
Immunohistochemistry of paraffin-embedded  
 Human liver cancer tissue using [TA369592]  
 (NUDT2 Antibody) at dilution 1/25 (Original  
 magnification: x200)



Immunohistochemistry of paraffin-embedded Human liver cancer tissue using [TA369592] (NUDT2 Antibody) at dilution 1/25, treated with fusion protein. (Original magnification:  $\times 200$ )



Immunohistochemistry of paraffin-embedded Human lung cancer tissue using [TA369592] (NUDT2 Antibody) at dilution 1/25 (Original magnification:  $\times 200$ )



Immunohistochemistry of paraffin-embedded Human lung cancer tissue using [TA369592] (NUDT2 Antibody) at dilution 1/25, treated with fusion protein. (Original magnification:  $\times 200$ )