

## Product datasheet for **TA369586**

### SPCS2 Rabbit Polyclonal Antibody

#### Product data:

Product Type:	Primary Antibodies
Applications:	IHC, WB
Recommended Dilution:	WB: 500-2000 WB positive control: K-562 cell, Human placenta tissue, Mouse adrenal gland tissue, HT-29 cell, NIH/3T3 cell, Rat lung tissue IHC: 30-150 Positive control: Human gastric cancer Predicted cell location: Nucleus and Cytoplasm
Reactivity:	Human, Mouse, Rat
Host:	Rabbit
Isotype:	IgG
Clonality:	Polyclonal
Immunogen:	Fusion protein of human SPCS2
Formulation:	pH7.4 PBS, 0.05% NaN <sub>3</sub> , 40% Glycerol
Concentration:	lot specific
Purification:	Antigen affinity purification
Conjugation:	Unconjugated
Storage:	Store at -20°C.
Stability:	1 year
Predicted Protein Size:	25 kDa
Gene Name:	signal peptidase complex subunit 2
Database Link:	<a href="#">Entrez Gene 9789 Human Q15005</a>



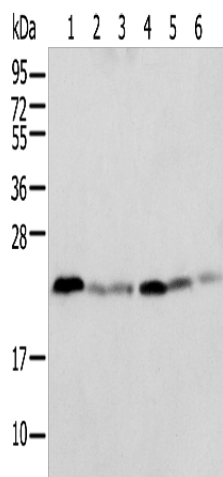
[View online »](#)

**Background:**

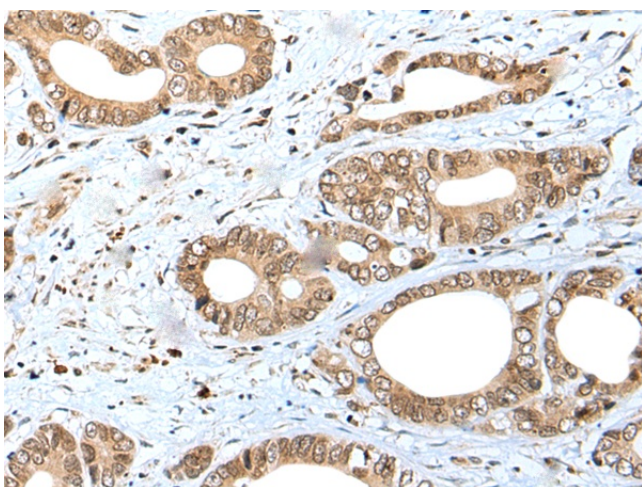
SPCS2 (signal peptidase complex subunit 2), also known as SPC25 or microsomal signal peptidase 25 kDa subunit, is a 226 amino acid multi-pass membrane protein that localizes to both the microsome and the endoplasmic reticulum (ER), and belongs to the SPCS (signal peptidase complex subunit) family. Existing as a component of the microsomal signal peptidase complex which consists of five members, SPCS2 removes signal peptides from nascent proteins as they are translocated into the lumen of the ER. The gene encoding SPCS2 is located on human chromosome 11, which houses over 1,400 genes and comprises nearly 4% of the human genome.

**Synonyms:**

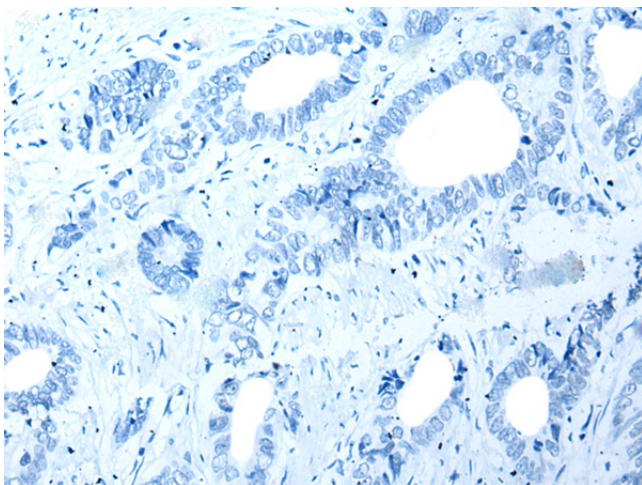
KIAA0102; MGC117366; SPC25

**Product images:**


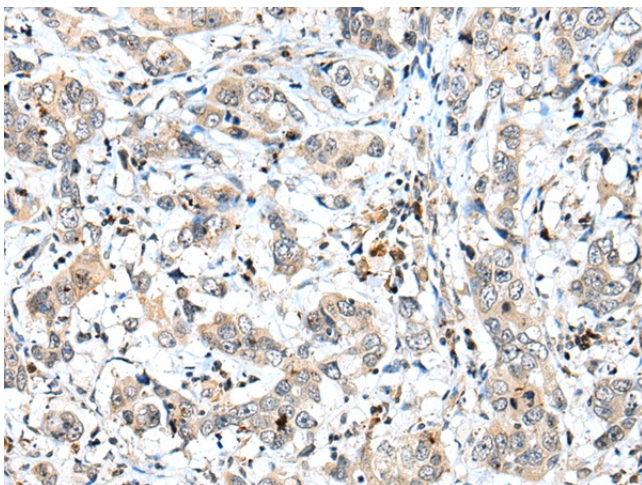
Gel: 12%SDS-PAGE  
 Lysate: 40 µg  
 Lane 1-6: K-562 cell  
 Human placenta tissue  
 Mouse adrenal gland tissue  
 HT-29 cell  
 NIH/3T3 cell  
 Rat lung tissue  
 Primary antibody: TA369586 (SPCS2 Antibody) at dilution 1/500  
 Secondary antibody: Goat anti rabbit IgG at 1/8000 dilution  
 Exposure time: 3 seconds



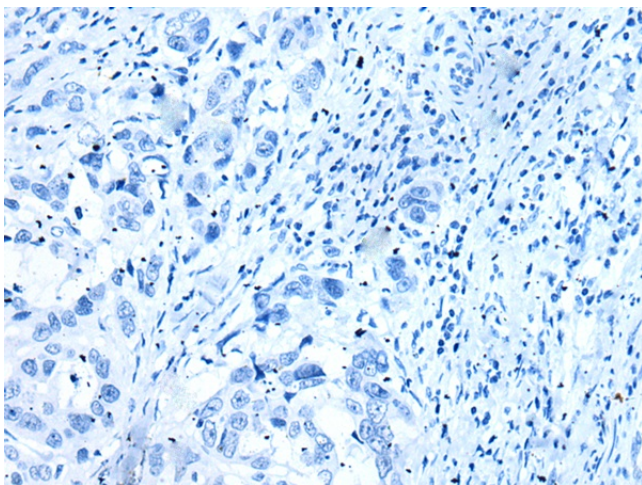
Immunohistochemistry of paraffin-embedded Human gastric cancer tissue using TA369586 (SPCS2 Antibody) at dilution 1/40 (Original magnification: ×200)



Immunohistochemistry of paraffin-embedded Human gastric cancer tissue using TA369586 (SPCS2 Antibody) at dilution 1/40, treated with fusion protein. (Original magnification: ×200)



Immunohistochemistry of paraffin-embedded Human breast cancer tissue using TA369586 (SPCS2 Antibody) at dilution 1/40 (Original magnification: ×200)



Immunohistochemistry of paraffin-embedded Human breast cancer tissue using TA369586 (SPCS2 Antibody) at dilution 1/40, treated with fusion protein. (Original magnification: ×200)