

## Product datasheet for **TA369583S**

### **C4orf46 Rabbit Polyclonal Antibody**

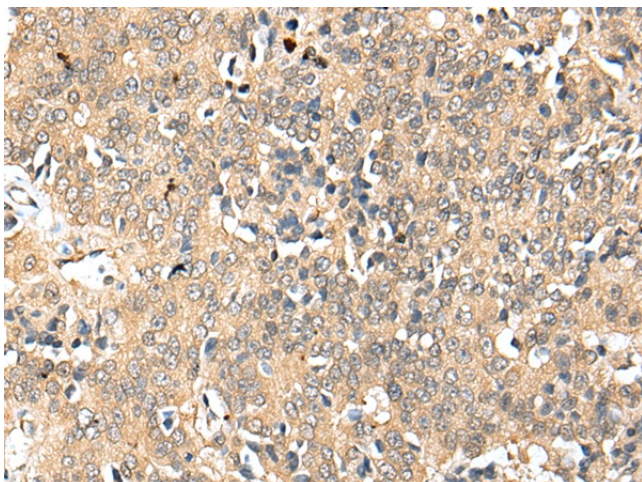
#### **Product data:**

Product Type:	Primary Antibodies
Applications:	IHC
Recommended Dilution:	IHC: 25-100 Positive control: Human prostate cancer Predicted cell location: Cytoplasm
Reactivity:	Human
Host:	Rabbit
Isotype:	IgG
Clonality:	Polyclonal
Immunogen:	Full length fusion protein
Formulation:	pH7.4 PBS, 0.05% NaN <sub>3</sub> , 40% Glycerol
Purification:	Antigen affinity purification
Conjugation:	Unconjugated
Storage:	Store at -20°C.
Stability:	1 year
Gene Name:	chromosome 4 open reading frame 46
Database Link:	<a href="#">Entrez Gene 201725 Human</a> <a href="#">Q504U0</a>
Background:	This gene encodes a small, conserved protein of unknown function that is expressed in a variety of tissues. There are pseudogenes for this gene on chromosomes 6, 8, 16, and X. Alternative splicing results in multiple transcript variants.
Synonyms:	LOC201725

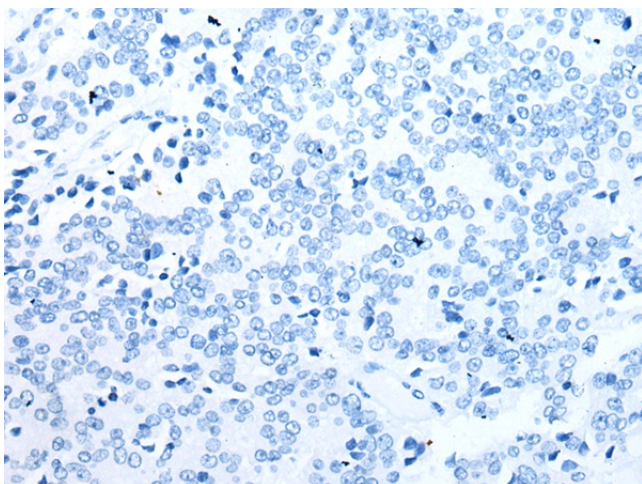


[View online »](#)

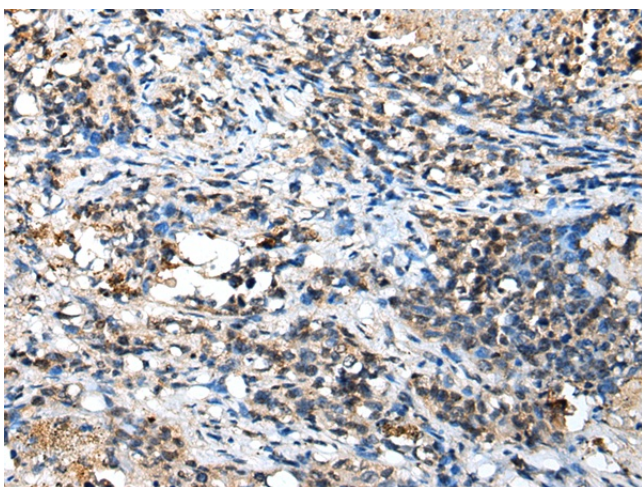
## Product images:



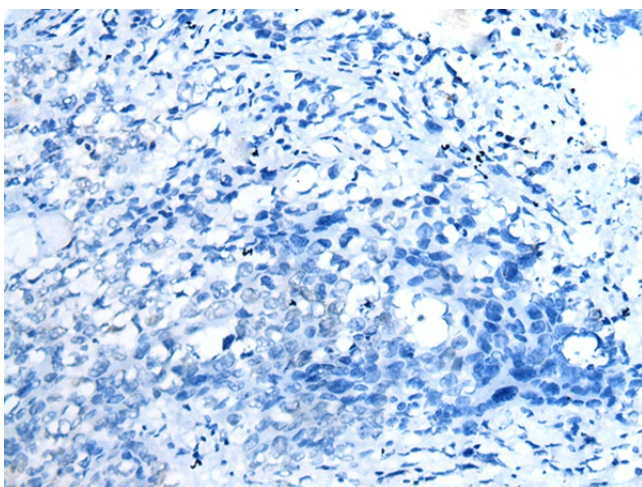
Immunohistochemistry of paraffin-embedded Human prostate cancer tissue using [TA369583] (C4orf46 Antibody) at dilution 1/30 (Original magnification:  $\times 200$ )



Immunohistochemistry of paraffin-embedded Human prostate cancer tissue using [TA369583] (C4orf46 Antibody) at dilution 1/30, treated with fusion protein. (Original magnification:  $\times 200$ )



Immunohistochemistry of paraffin-embedded Human lung cancer tissue using [TA369583] (C4orf46 Antibody) at dilution 1/30 (Original magnification: ×200)



Immunohistochemistry of paraffin-embedded Human lung cancer tissue using [TA369583] (C4orf46 Antibody) at dilution 1/30, treated with fusion protein. (Original magnification: ×200)