

## Product datasheet for **TA369582S**

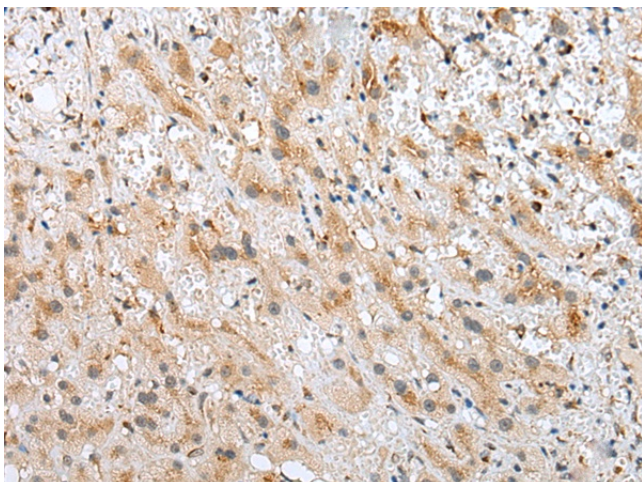
### **SYCE3 Rabbit Polyclonal Antibody**

#### **Product data:**

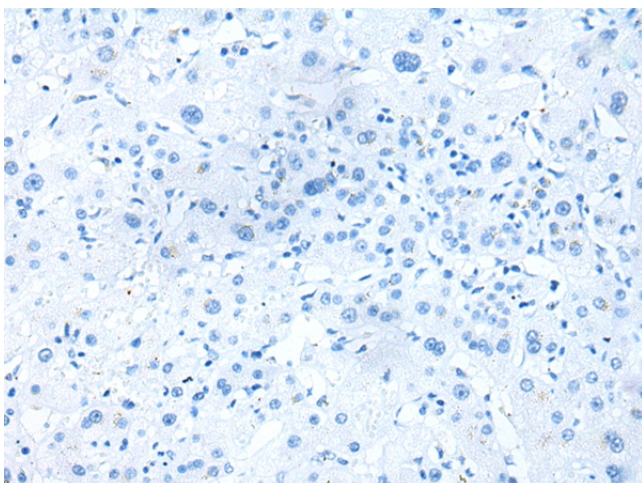
<b>Product Type:</b>	Primary Antibodies
<b>Applications:</b>	IHC
<b>Recommended Dilution:</b>	IHC: 20-100 Positive control: Human liver cancer Predicted cell location: Cytoplasm or Nucleus
<b>Reactivity:</b>	Human, Mouse
<b>Host:</b>	Rabbit
<b>Isotype:</b>	IgG
<b>Clonality:</b>	Polyclonal
<b>Immunogen:</b>	Full length fusion protein
<b>Formulation:</b>	pH7.4 PBS, 0.05% NaN <sub>3</sub> , 40% Glycerol
<b>Purification:</b>	Antigen affinity purification
<b>Conjugation:</b>	Unconjugated
<b>Storage:</b>	Store at -20°C.
<b>Stability:</b>	1 year
<b>Gene Name:</b>	synaptonemal complex central element protein 3
<b>Database Link:</b>	<a href="#">Entrez Gene 644186 Human</a> <a href="#">A1L190</a>
<b>Background:</b>	Major component of the transverse central element of synaptonemal complexes (SCS), formed between homologous chromosomes during meiotic prophase. Required for chromosome loading of the central element-specific SCS proteins, and for initiating synapsis between homologous chromosomes. Chromosome loading appears to require SYCP1. Required for fertility (By similarity).
<b>Synonyms:</b>	1700007E06Rik; TSEG-2; TSEG2



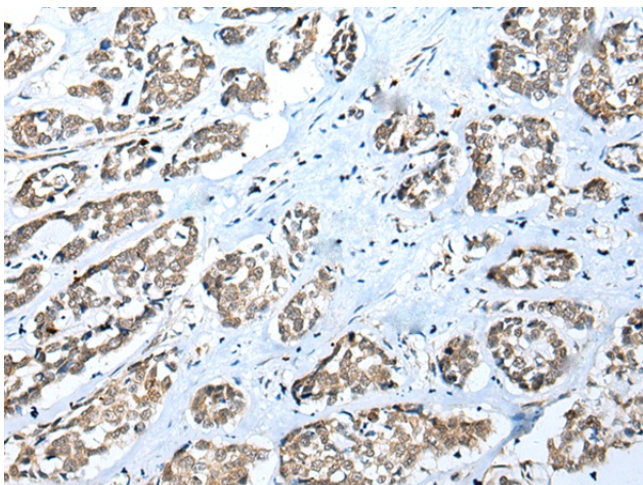
[View online »](#)

**Product images:**

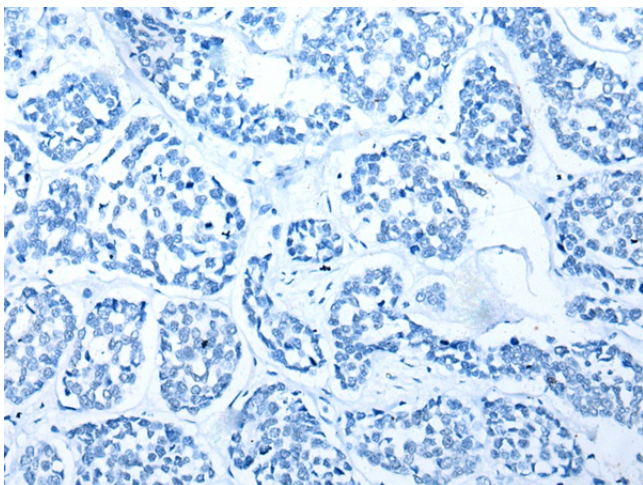
Immunohistochemistry of paraffin-embedded Human liver cancer tissue using [TA369582] (SYCE3 Antibody) at dilution 1/25 (Original magnification:  $\times 200$ )



Immunohistochemistry of paraffin-embedded Human liver cancer tissue using [TA369582] (SYCE3 Antibody) at dilution 1/25, treated with fusion protein. (Original magnification:  $\times 200$ )



Immunohistochemistry of paraffin-embedded Human esophagus cancer tissue using [TA369582] (SYCE3 Antibody) at dilution 1/25 (Original magnification:  $\times 200$ )



Immunohistochemistry of paraffin-embedded Human esophagus cancer tissue using [TA369582] (SYCE3 Antibody) at dilution 1/25, treated with fusion protein. (Original magnification:  $\times 200$ )