

## Product datasheet for **TA369577S**

### INDOL1 (IDO2) Rabbit Polyclonal Antibody

#### Product data:

Product Type:	Primary Antibodies
Applications:	IHC, WB
Recommended Dilution:	WB: 500-2000 WB positive control: Human fetal brain tissue and Human kidney tissue IHC: 30-150 Positive control: Human brain Predicted cell location: Cytoplasm
Reactivity:	Human
Host:	Rabbit
Isotype:	IgG
Clonality:	Polyclonal
Immunogen:	Full length fusion protein
Formulation:	pH7.4 PBS, 0.05% NaN <sub>3</sub> , 40% Glycerol
Purification:	Antigen affinity purification
Conjugation:	Unconjugated
Storage:	Store at -20°C.
Stability:	1 year
Predicted Protein Size:	45 kDa
Gene Name:	indoleamine 2,3-dioxygenase 2
Database Link:	<a href="#">Entrez Gene 169355 Human Q6ZQW0</a>



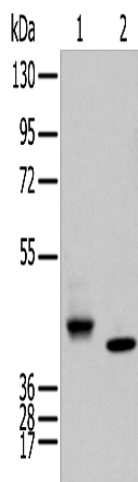
[View online »](#)

**Background:**

INDOL1 is also known as IDO2 (indoleamine 2,3-dioxygenase 2) and is a 407 amino acid protein that is expressed in various tissues, including liver, small intestine, spleen, placenta, thymus, lung, brain, kidney, colon and dendritic cells. INDOL1 is selectively inhibited by D-1MT (1-methyl-d-tryptophan), which also inhibits IDO (indoleamine 2,3-dioxygenase) and is significant because IDO expression causes suppression of T cell responses to tumors in dendritic cells. The inhibition of INDOL1 by D-1MT suggests a common function in immunomodulation. In the human INDOL1 gene, two single nucleotide polymorphisms have been detected which abolish the enzymatic function of INDOL1.

**Synonyms:**

INDOL1

**Product images:**

Gel: 8%SDS-PAGE

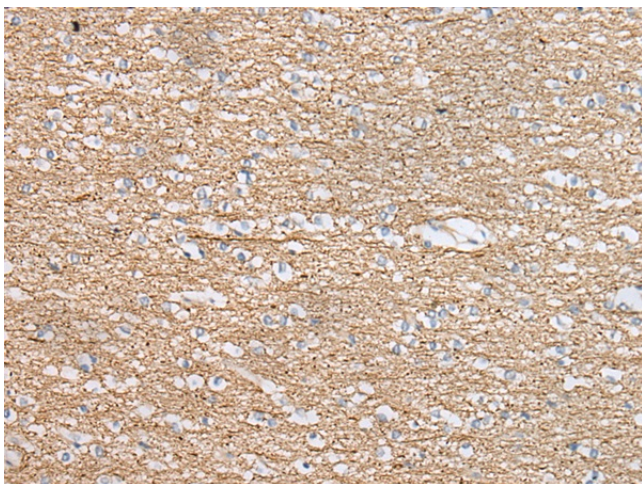
Lysate: 40 µg

Lane 1-2: Human fetal brain tissue and Human kidney tissue

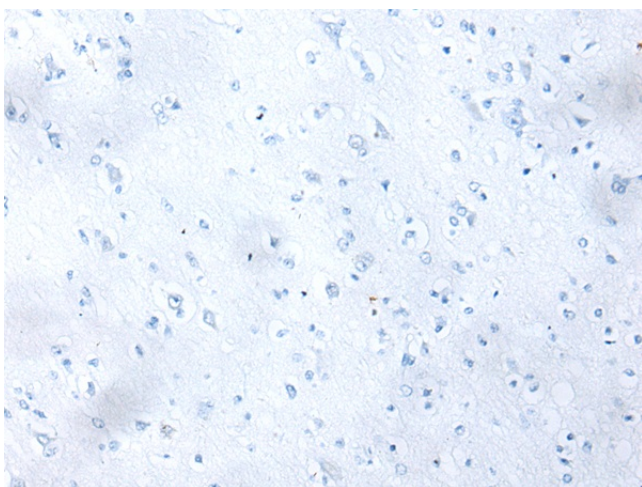
Primary antibody: [TA369577] (IDO2 Antibody) at dilution 1/450

Secondary antibody: Goat anti rabbit IgG at 1/8000 dilution

Exposure time: 30 seconds



Immunohistochemistry of paraffin-embedded Human brain tissue using [TA369577] (IDO2 Antibody) at dilution 1/45 (Original magnification: ×200)



Immunohistochemistry of paraffin-embedded Human brain tissue using [TA369577] (IDO2 Antibody) at dilution 1/45, treated with fusion protein. (Original magnification: ×200)