

Product datasheet for **TA369576S**

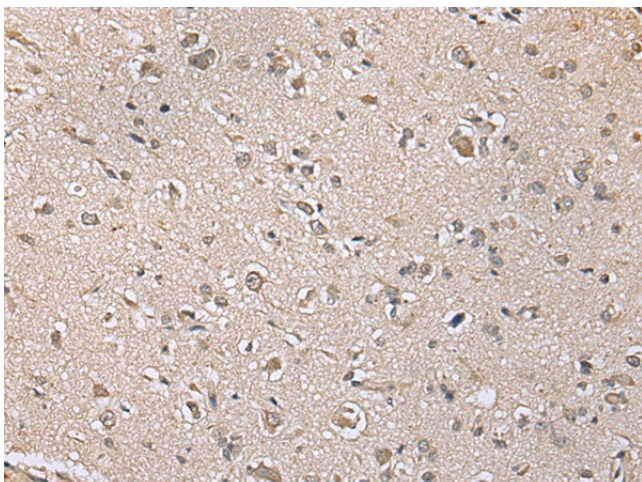
PIN4 Rabbit Polyclonal Antibody

Product data:

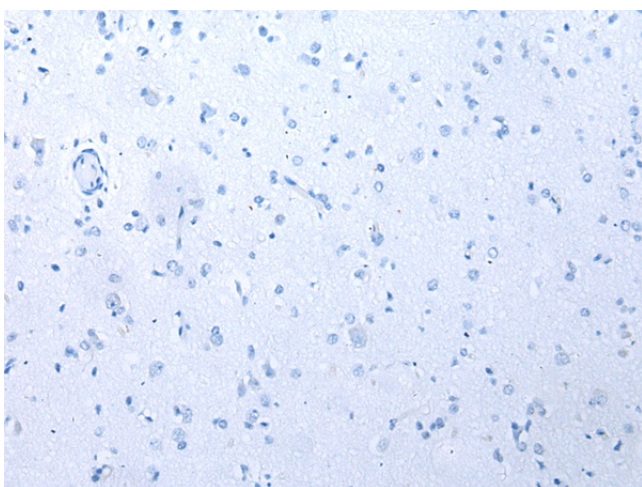
Product Type:	Primary Antibodies
Applications:	IHC
Recommended Dilution:	IHC: 20-100 Positive control: Human brain Predicted cell location: Cytoplasm and Nucleus
Reactivity:	Human, Mouse
Host:	Rabbit
Isotype:	IgG
Clonality:	Polyclonal
Immunogen:	Full length fusion protein
Formulation:	pH7.4 PBS, 0.05% NaN ₃ , 40% Glycerol
Purification:	Antigen affinity purification
Conjugation:	Unconjugated
Storage:	Store at -20°C.
Stability:	1 year
Gene Name:	peptidylprolyl cis/trans isomerase, NIMA-interacting 4
Database Link:	Entrez Gene 5303 Human Q9Y237
Background:	This gene encodes a member of the parvulin subfamily of the peptidyl-prolyl cis/trans isomerase protein family. The encoded protein catalyzes the isomerization of peptidylprolyl bonds, and may play a role in the cell cycle, chromatin remodeling, and/or ribosome biogenesis. The encoded protein may play an additional role in the mitochondria.
Synonyms:	EPVH; hEPVH; hPar14; hPar17; MGC138486; PAR14; Par17; Parvulin-14; Parvulin-17



[View online »](#)

Product images:

Immunohistochemistry of paraffin-embedded Human brain tissue using [TA369576] (PIN4 Antibody) at dilution 1/20 (Original magnification: ×200)



Immunohistochemistry of paraffin-embedded Human brain tissue using [TA369576] (PIN4 Antibody) at dilution 1/20, treated with fusion protein. (Original magnification: ×200)