

Product datasheet for **TA369572**

TSGA2 (RSPH1) Rabbit Polyclonal Antibody

Product data:

Product Type:	Primary Antibodies
Applications:	IHC, WB
Recommended Dilution:	WB: 500-2000 WB positive control: Human testis tissue IHC: 25-100 Positive control: Human brain Predicted cell location: Cytoplasm
Reactivity:	Human
Host:	Rabbit
Isotype:	IgG
Clonality:	Polyclonal
Immunogen:	Fusion protein of human RSPH1
Formulation:	pH7.4 PBS, 0.05% NaN ₃ , 40% Glycerol
Concentration:	lot specific
Purification:	Antigen affinity purification
Conjugation:	Unconjugated
Storage:	Store at -20°C.
Stability:	1 year
Predicted Protein Size:	35 kDa
Gene Name:	radial spoke head 1 homolog
Database Link:	Entrez Gene 89765 Human Q8WYR4

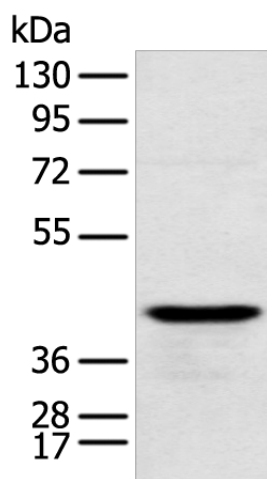
Background: This gene encodes a male meiotic metaphase chromosome-associated acidic protein. This gene is expressed in tissues with motile cilia or flagella, including the trachea, lungs, airway brushings, and testes. Mutations in this gene result in primary ciliary dyskinesia-24. Alternatively spliced transcript variants encoding different isoforms have been found for this gene.



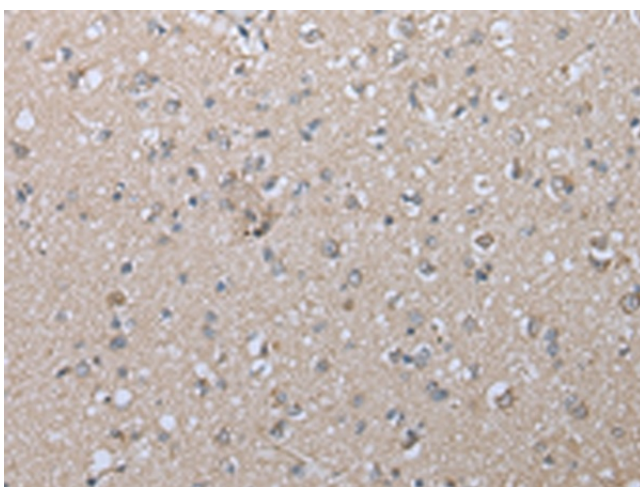
[View online »](#)

Synonyms: CT79; FLJ32753; h-meichroacidin; meichroacidin; MGC126568; MGC141927; RSP44; RSPH10A; TSA2; TSGA2

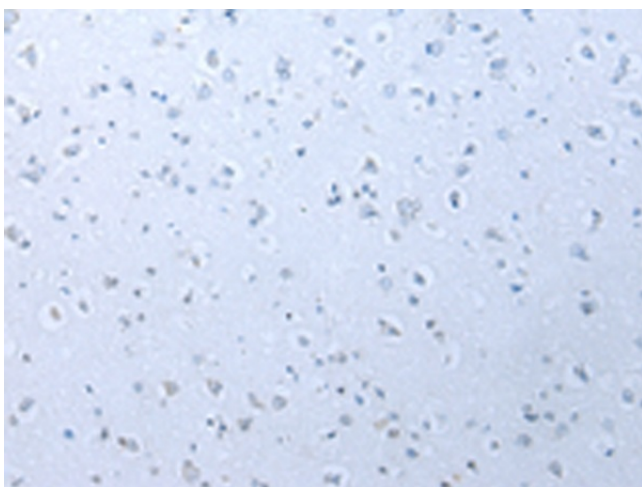
Product images:



Gel: 8%SDS-PAGE
Lysate: 40 μ g
Lane: Human testis tissue
Primary antibody: TA369572 (RSPH1 Antibody) at dilution 1/250
Secondary antibody: Goat anti rabbit IgG at 1/8000 dilution
Exposure time: 5 seconds



Immunohistochemistry of paraffin-embedded Human brain tissue using TA369572 (RSPH1 Antibody) at dilution 1/20 (Original magnification: \times 200)



Immunohistochemistry of paraffin-embedded Human brain tissue using TA369572 (RSPH1 Antibody) at dilution 1/20, treated with fusion protein. (Original magnification: $\times 200$)