

Product datasheet for **TA369567**

UBE2J2 Rabbit Polyclonal Antibody

Product data:

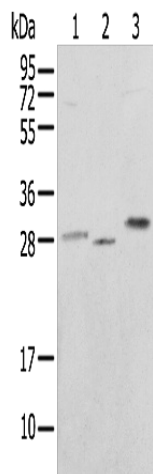
Product Type:	Primary Antibodies
Applications:	IHC, WB
Recommended Dilution:	WB: 200-1000 WB positive control: 293T cell, Mouse skeletal muscle tissue and HEPG2 cell IHC: 10-50 Positive control: Human liver cancer Predicted cell location: Cytoplasm
Reactivity:	Human, Mouse
Host:	Rabbit
Isotype:	IgG
Clonality:	Polyclonal
Immunogen:	Fusion protein of human UBE2J2
Formulation:	pH7.4 PBS, 0.05% NaN ₃ , 40% Glycerol
Concentration:	lot specific
Purification:	Antigen affinity purification
Conjugation:	Unconjugated
Storage:	Store at -20°C.
Stability:	1 year
Predicted Protein Size:	29 kDa
Gene Name:	ubiquitin conjugating enzyme E2 J2
Database Link:	Entrez Gene 118424 Human Q8N2K1
Background:	The modification of proteins with ubiquitin is an important cellular mechanism for targeting abnormal or short-lived proteins for degradation. Ubiquitination involves at least three classes of enzymes: ubiquitin-activating enzymes, or E1s, ubiquitin-conjugating enzymes, or E2s, and ubiquitin-protein ligases, or E3s. This gene encodes a member of the E2 ubiquitin-conjugating enzyme family. This enzyme is located in the membrane of the endoplasmic reticulum.



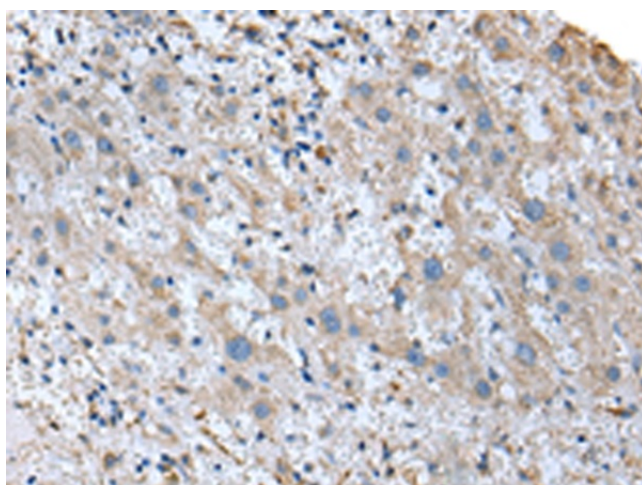
[View online »](#)

Synonyms: NCUBE2; OTTHUMP00000002078; PRO2121; Ubc6p

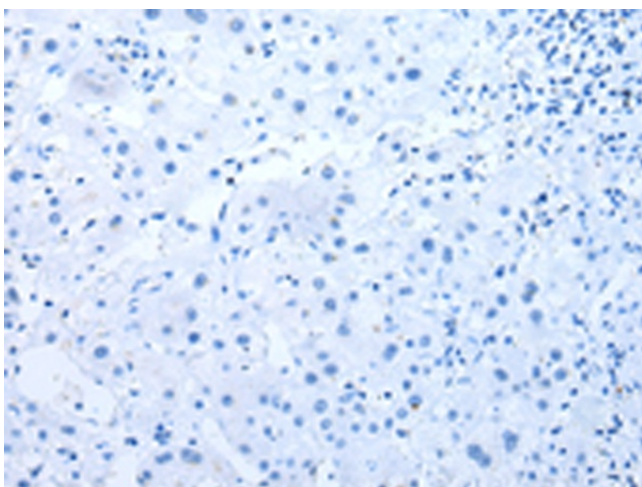
Product images:



Gel: 12%SDS-PAGE
 Lysate: 40 µg
 Lane 1-3: 293T cell
 Mouse skeletal muscle tissue and HEPG2 cell
 Primary antibody: TA369567 (UBE2J2 Antibody) at dilution 1/250
 Secondary antibody: Goat anti rabbit IgG at 1/8000 dilution
 Exposure time: 3 seconds



Immunohistochemistry of paraffin-embedded Human liver cancer tissue using TA369567 (UBE2J2 Antibody) at dilution 1/20 (Original magnification: ×200)



Immunohistochemistry of paraffin-embedded Human liver cancer tissue using TA369567 (UBE2J2 Antibody) at dilution 1/20, treated with fusion protein. (Original magnification: $\times 200$)