

Product datasheet for **TA369564**

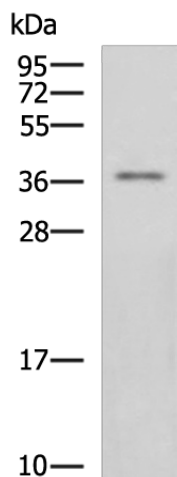
ITLN2 Rabbit Polyclonal Antibody

Product data:

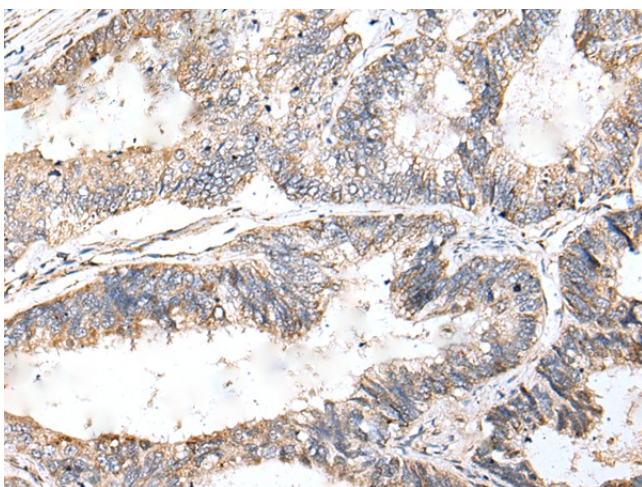
Product Type:	Primary Antibodies
Applications:	IHC, WB
Recommended Dilution:	WB: 200-1000 WB positive control: Human ileum tissue lysate IHC: 25-100 Positive control: Human colorectal cancer Predicted cell location: Secreted
Reactivity:	Human
Host:	Rabbit
Isotype:	IgG
Clonality:	Polyclonal
Immunogen:	Fusion protein of human ITLN2
Formulation:	pH7.4 PBS, 0.05% NaN ₃ , 40% Glycerol
Concentration:	lot specific
Purification:	Antigen affinity purification
Conjugation:	Unconjugated
Storage:	Store at -20°C.
Stability:	1 year
Predicted Protein Size:	36 kDa
Gene Name:	intelectin 2
Database Link:	Entrez Gene 142683 Human Q8WWU7
Background:	May play a role in the defense system against pathogens.Expressed only in the small intestine.
Synonyms:	HL-2; HL2



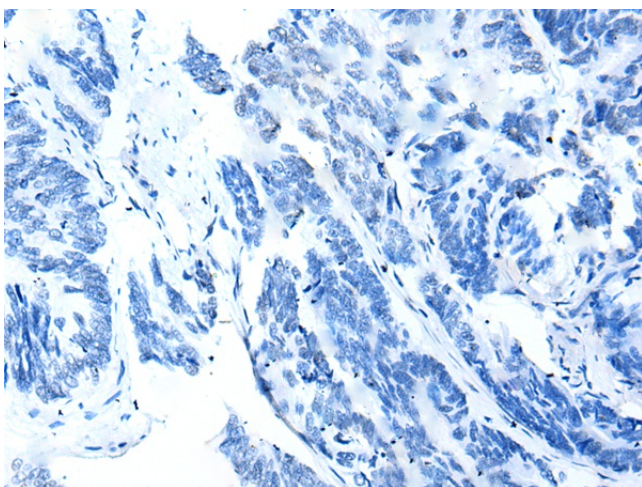
[View online »](#)

Product images:


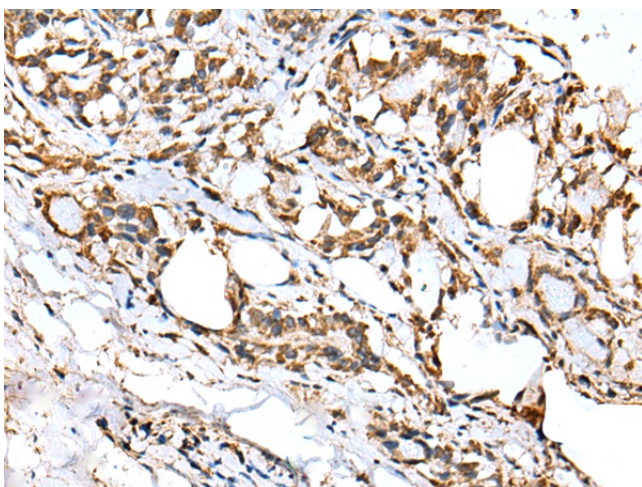
Gel: 12%SDS-PAGE
 Lysate: 40 µg
 Lane: Human ileum tissue lysate
 Primary antibody: TA369564 (ITLN2 Antibody) at dilution 1/400
 Secondary antibody: Goat anti rabbit IgG at 1/5000 dilution
 Exposure time: 15 seconds



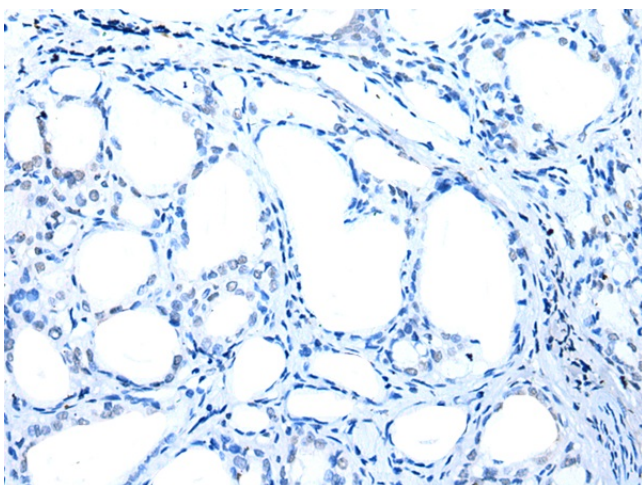
Immunohistochemistry of paraffin-embedded Human colorectal cancer tissue using TA369564 (ITLN2 Antibody) at dilution 1/20 (Original magnification: ×200)



Immunohistochemistry of paraffin-embedded Human colorectal cancer tissue using TA369564 (ITLN2 Antibody) at dilution 1/20, treated with fusion protein. (Original magnification: ×200)



Immunohistochemistry of paraffin-embedded Human thyroid cancer tissue using TA369564 (ITLN2 Antibody) at dilution 1/20 (Original magnification: ×200)



Immunohistochemistry of paraffin-embedded Human thyroid cancer tissue using TA369564 (ITLN2 Antibody) at dilution 1/20, treated with fusion protein. (Original magnification: ×200)