

## Product datasheet for **TA369560S**

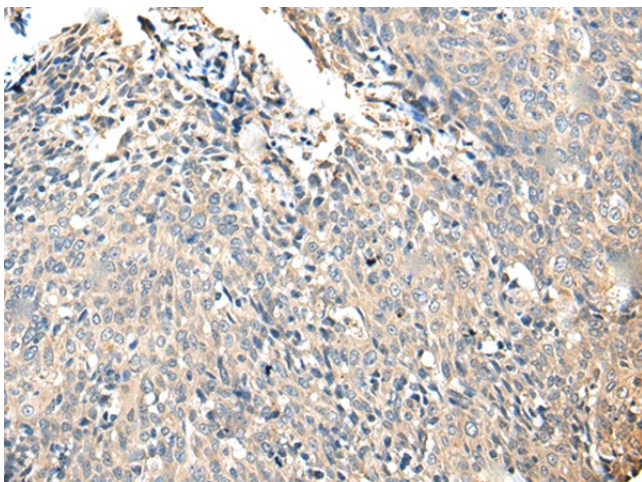
### SLC35E2A Rabbit Polyclonal Antibody

#### Product data:

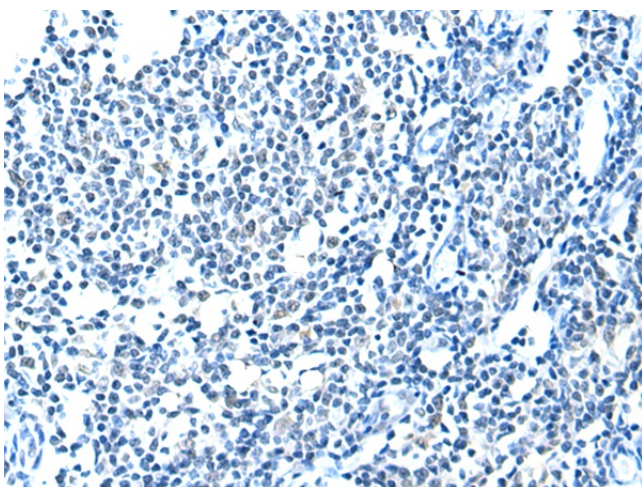
Product Type:	Primary Antibodies
Applications:	IHC
Recommended Dilution:	IHC: 25-100 Positive control: Human cervical cancer Predicted cell location: Cytoplasm
Reactivity:	Human
Host:	Rabbit
Isotype:	IgG
Clonality:	Polyclonal
Immunogen:	Fusion protein of human SLC35E2A
Formulation:	pH7.4 PBS, 0.05% NaN <sub>3</sub> , 40% Glycerol
Purification:	Antigen affinity purification
Conjugation:	Unconjugated
Storage:	Store at -20°C.
Stability:	1 year
Gene Name:	solute carrier family 35 member E2
Database Link:	<a href="#">Entrez Gene 9906 Human</a> <a href="#">P0CK97</a>
Background:	Putative transporter.
Synonyms:	DKFZp686M0869; FLJ34996; FLJ44537; KIAA0447; MGC104754; MGC117254; MGC126715; MGC138494



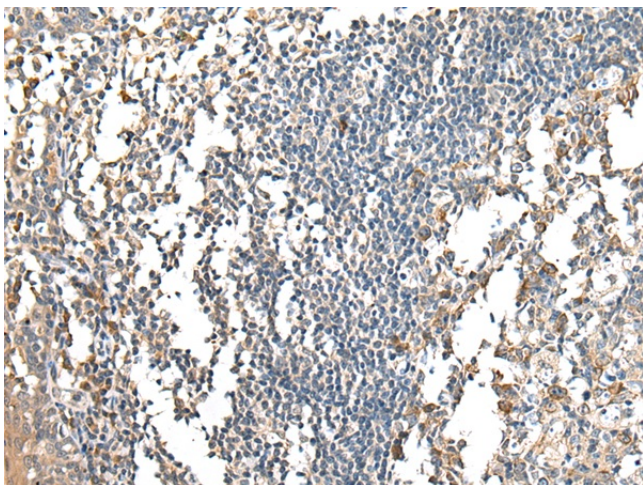
[View online »](#)

**Product images:**

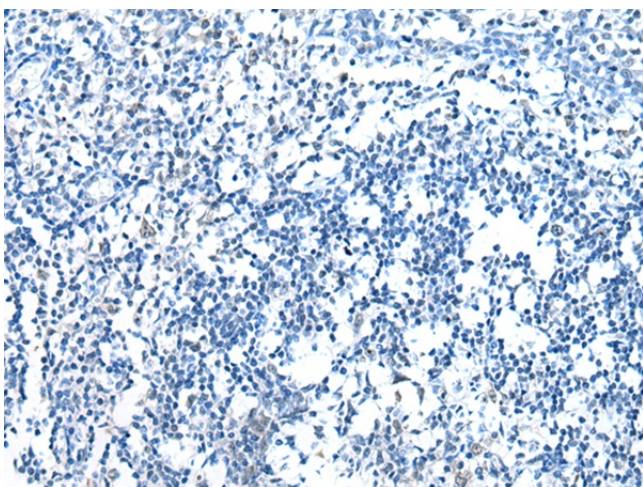
Immunohistochemistry of paraffin-embedded Human cervical cancer tissue using [TA369560] (SLC35E2A Antibody) at dilution 1/25 (Original magnification: ×200)



Immunohistochemistry of paraffin-embedded Human cervical cancer tissue using [TA369560] (SLC35E2A Antibody) at dilution 1/25, treated with fusion protein. (Original magnification: ×200)



Immunohistochemistry of paraffin-embedded Human tonsil tissue using [TA369560] (SLC35E2A Antibody) at dilution 1/25 (Original magnification: ×200)



Immunohistochemistry of paraffin-embedded Human tonsil tissue using [TA369560] (SLC35E2A Antibody) at dilution 1/25, treated with fusion protein. (Original magnification: ×200)