

## Product datasheet for **TA369545S**

### ZNF621 Rabbit Polyclonal Antibody

#### Product data:

Product Type:	Primary Antibodies
Applications:	IHC, WB
Recommended Dilution:	WB: 200-1000 WB positive control: Human 2-3 grade bladder transitional cell carcinoma tissue IHC: 20-100 Positive control: Human prostate cancer Predicted cell location: Nucleus
Reactivity:	Human
Host:	Rabbit
Isotype:	IgG
Clonality:	Polyclonal
Immunogen:	Fusion protein of human ZNF621
Formulation:	pH7.4 PBS, 0.05% NaN <sub>3</sub> , 40% Glycerol
Purification:	Antigen affinity purification
Conjugation:	Unconjugated
Storage:	Store at -20°C.
Stability:	1 year
Predicted Protein Size:	49 kDa
Gene Name:	zinc finger protein 621
Database Link:	<a href="#">Entrez Gene 285268 Human Q6ZSS3</a>



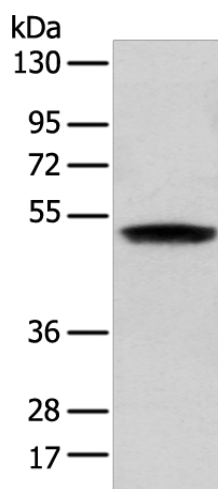
[View online »](#)

**Background:**

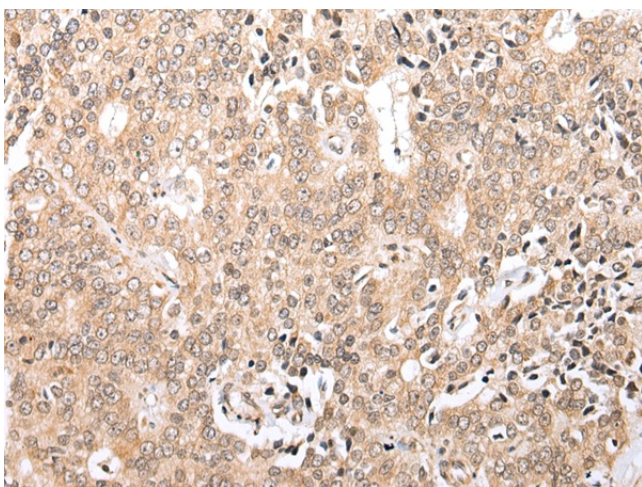
As a member of the krueppel C2H2-type zinc-finger protein family, ZNF621 (Zinc finger protein 621) is a 439 amino acid nuclear protein that contains one KRAB domain and seven C2H2-type zinc fingers. The gene encoding ZNF621 maps to human chromosome 3, which is made up of about 214 million bases encoding over 1,100 genes, including a chemokine receptor (CKR) gene cluster and a variety of human cancer-related gene loci. Marfan Syndrome, porphyria, von Hippel-Lindau syndrome, osteogenesis imperfecta and Charcot-Marie-Tooth Disease are a few of the numerous genetic diseases associated with chromosome 3. There are two isoforms of ZNF621 that are produced as a result of alternative splicing events.

**Synonyms:**

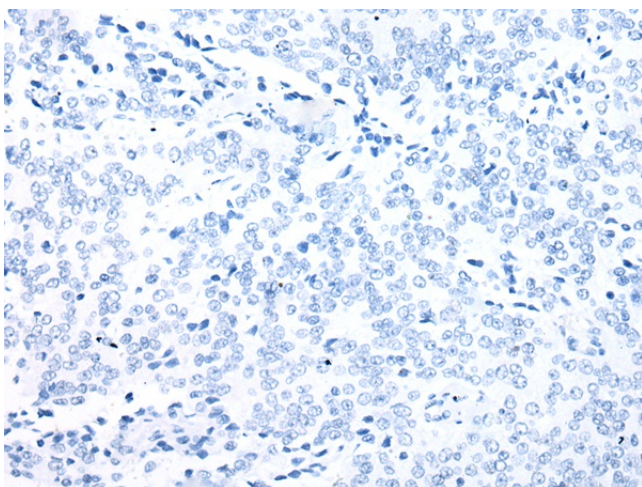
DKFZp686B11107; FLJ23786; FLJ45246; MGC126668

**Product images:**

Gel: 8%SDS-PAGE  
Lysate: 40 µg  
Lane: Human 2-3 grade bladder transitional cell carcinoma tissue  
Primary antibody: [TA369545] (ZNF621 Antibody) at dilution 1/250  
Secondary antibody: Goat anti rabbit IgG at 1/8000 dilution  
Exposure time: 1 second



Immunohistochemistry of paraffin-embedded Human prostate cancer tissue using [TA369545] (ZNF621 Antibody) at dilution 1/20 (Original magnification: ×200)



Immunohistochemistry of paraffin-embedded Human prostate cancer tissue using [TA369545] (ZNF621 Antibody) at dilution 1/20, treated with fusion protein. (Original magnification:  $\times 200$ )